

Ascend

Pipeline 130 Family

Dual WAN port, multiprotocol remote access router/bridge — supporting a combination of dial-up ISDN BRI, Frame Relay, T1/FT1 and leased lines with integrated CSU/DSU, NT1 and optional firewall

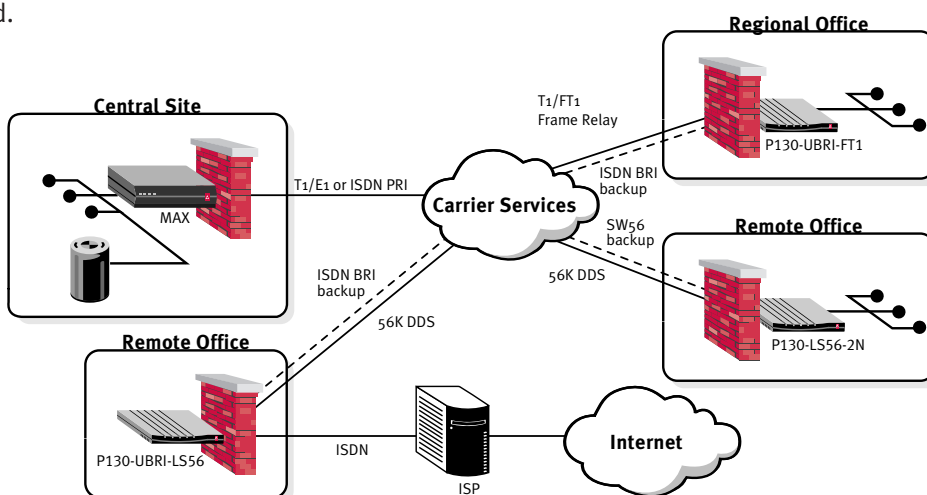


What it does

The three models in the Pipeline 130® family provide a cost-effective, flexible and secure solution for corporate Internet access and/or mission-critical remote network connectivity. Each Pipeline 130 product provides a built-in growth path — scaling from a single dial-up line, to multiple digital connections — with no additional hardware purchase required.

Applications:

- Mission-Critical Remote Networking
- Corporate Internet Gateway
- Integrated Remote Networking/Internet Access

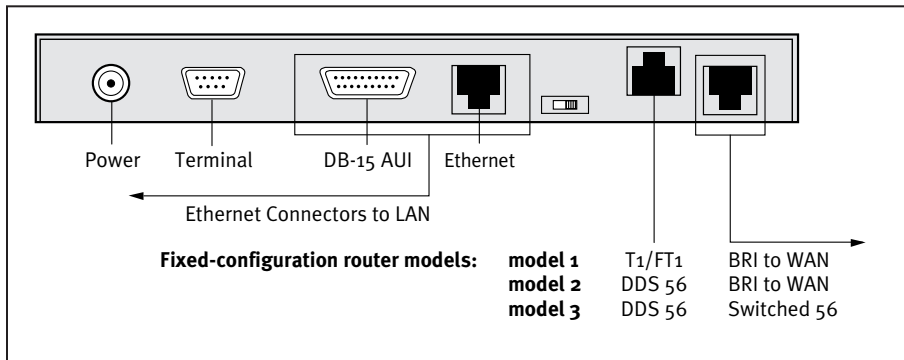


Selling Points

- **Cost-effective, convenient and complete solution** - Integrated NT1, CSU/DSU, ISDN, and Frame Relay support in a modem-sized device costing less than most competitor's incomplete solutions.
- **Flexible, scalable Internet access** - Connects remote offices and corporate LANs to the Internet, and fully supports growth from a 56K dial-up or leased line to a frame relay connection at up to T1 speeds.
- **Cost-effective network redundancy** - Provides a dedicated WAN connection, in addition to an integrated switched connection for mission-critical back-up and overflow applications.
- **Lowest-cost operation**
 - Ascend's patented Dynamic Bandwidth Allocation™ saves money by increasing/decreasing bandwidth as needed during connection.
 - Choose between dial-up and dedicated connections depending on usage and volume.
- Dial-up port available to accommodate overflow traffic from dedicated port (non-frame relay connections only) — minimizes hardware costs.
- **Integrated Firewall solution** - The Pipeline 130 is the only access router with an optional integrated dynamic firewall (more secure than traditional firewall technology).
- **Easiest to manage solution** - Choose from SNMP, Telnet, Syslog and out-of-band remote management.
- **Most comprehensive line** — The Pipeline product line represents the largest range of flexible solutions for small office/home office, telecommuting, Internet access and remote access.
- **Remote access leadership** - Ascend has market dominance (54%) in the access concentrator market.



Pipeline 130 Features



Pipeline 130 Back Panel

The Pipeline 130 family consists of three products, each supporting a full Ethernet LAN. Models include:

Pipeline 130-T1/FT1, ISDN BRI (U or S/T interface), T1/FT1, and frame relay

Fully integrated NT1, and DSU/CSU supporting up to a full T1 (1.544 Mbps)

Pipeline 130-L56 for SW 56, DDS 56, ISDN BRI (U or S/T interface)

Fully integrated NT1, and DSU/CSU

Pipeline 130-LS56-2N for SW 56, DDS 56

Fully integrated DSU/CSU

Feature set for all models

WAN

- RFC 1490 Frame Relay encapsulation, Annex D Link Management
- Supports up to 8 PVC's
- PPP, Multilink PPP (MP), or Multilink Protocol Plus™ (MP+)
- Dial-on-demand
- Dynamic Bandwidth Allocation combines both B-channels (for 128 Kbps throughput), or independently on an as-needed basis.
- STAC data compression for up to 512 Kbps over ISDN BRI
- Unicast and multicast packet filtering

LAN Interface

- BCP standard bridging supports any bridgeable protocol
- Integrated routing (IP for Internet access, IPX for corporate NetWare networks)
- Pre-configured bridging filters for IP, IPX and AppleTalk protocols, and IPX spoofing
- Support for up to 1024 LAN devices
- Built-in Ethernet (10 Mbps) interface (AUI and 10Base-T ports)

Management

- SNMP, Telnet, Syslog, and Ascend Remote Management protocol for local or remote management over a network or Internet.
- Terminal (VT100)-based access available via 9 pin serial port (RS232)
- Support for TFTP for remote software upgrades
- Flash memory for easy software upgrades
- WAN loopback

Integrated Security feature option

Secure Access™ Firewall offers:

- Fully-integrated dynamic firewall(stateful inspection)
- Comprehensive monitoring and logging
- Easy configuration and management with Secure Access Manager
- Authentication profiles with PAP, or CHAP
- Token card-based security
- Callback assures connections are made only with known users
- Password-protected terminal server access

Competition

Feature	Ascend Pipeline 130	Cisco 2503l	3Com NB 201	3Com AB 500	Motorola Vanguard 300	Bay/Xylogics MARLIN
Price-Base	\$1,995	\$2,195	\$1,595	\$1,595	\$2,299	\$2,695
IP/IPX Solution Price	\$1,995	\$5,395	\$2,795	\$2,290	\$2,599	\$3,395
Firewall Option ¹	\$1,000	\$9,000 - \$40K	\$1,495	\$1,495	N/A	\$3,195
WAN Support						
ISDN BRI	✓	✓	External	✓	✓	✓
NT1	✓	External	External	✓	External	✓
DSU/CSU	✓	External	External	External	Opt. to 56K	External
Switched 56	✓	✓	No	No	No	No
DDS 56	✓	✓	✓	✓	No	✓
T1/E1	✓	✓	✓	✓	✓	✓
Frame Relay	✓	✓	✓	No	✓	No
Protocol Support						
BCP Bridging	✓	✓	No	✓	✓	✓
IP Routing	✓	Optional	✓	✓	✓	✓
IPX Routing	✓	Optional ²	✓	✓	✓	✓
PPP Support	✓	✓	✓	✓	✓	✓
MP Support	✓	✓	No	No	✓	✓
Integrated STAC Compression	✓	No	No	✓	No	✓
Security						
PAP & CHAP	✓	✓	✓	✓	No	✓
Token-based Security	✓	✓	No	✓	No	No
Integrated, Dynamic Firewall	Optional	No	No	No	No	No

¹All Firewall options except Ascend's are external, non-integrated, 3rd Party solutions.

²Cisco software upgrades require RAM upgrades at additional cost.

Selling against the competition

Cisco CPA 2503l

- Expensive to purchase and maintain; software upgrades require RAM upgrades at additional cost
- Complexity of Cisco's IOS makes installation and configuration difficult
- Lacks integrated DSU/CSU resulting in a multivendor solution — additional points of failure and cost
- Lacks integrated NT1
- Lack of integrated, dynamic firewall security software resulting in a more complex, expensive system

3Com NetBuilder 201

- Expensive compared to the Pipeline 130 integrated solution
- Boundary routing solution must be used with a 3Com central site router
- Lacks integrated DSU/CSU
- Lacks integrated ISDN support
- Lack of integrated, dynamic firewall security software results in a more complex, more expensive system.

3Com AccessBuilder Remote Office 500

- Lacks integrated DSU/CSU
- Lacks Token-based security which increases potential for unauthorized network access
- Lacks integrated, dynamic firewall security
- Proprietary compression algorithm results in compatibility issues with Internet Service Providers
- No Switched 56 backup support

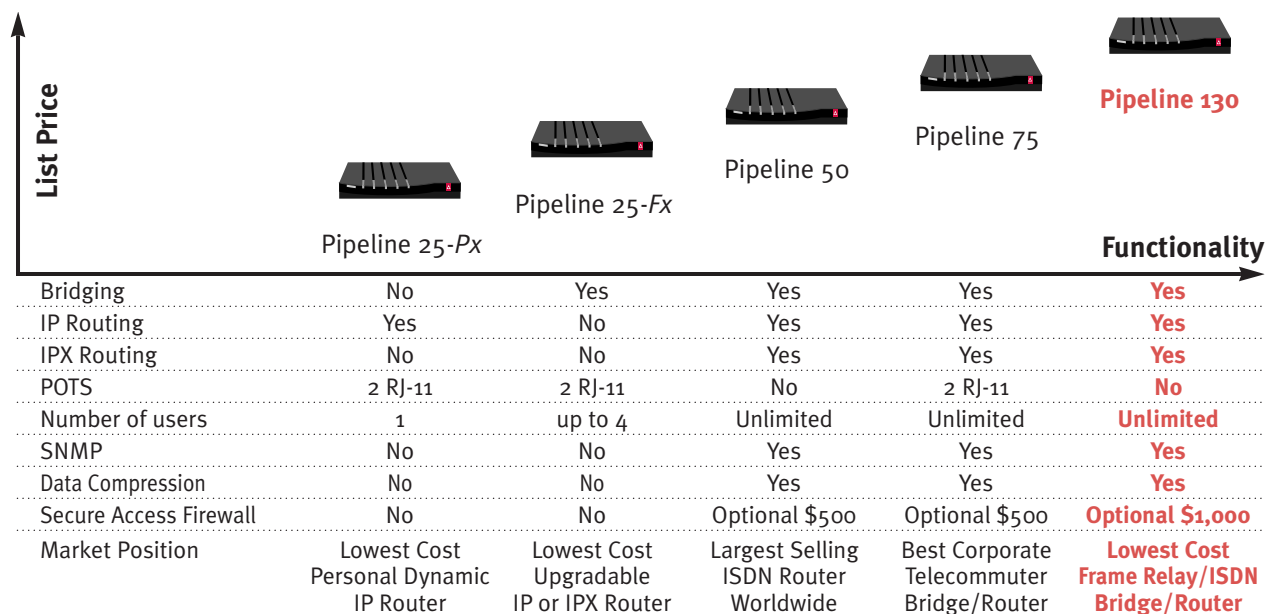
Motorola Vanguard 300

- Optionally integrated DSU/CSU only supports 56K — forces purchase of expensive third party solution for higher speeds
- Lacks integrated NT1
- Lacks integrated, dynamic firewall security
- No support for Switched 56 services
- Lack of PAP, CHAP or Token-based security support increases potential for unauthorized network access

Bay Networks (Xylogics) MARLIN

- Lacks integrated DSU/CSU
- Lacks integrated, dynamic firewall security
- Lacks frame relay support resulting in fewer high speed connectivity options
- Lacks Switched 56 support limiting backup and overflow line options
- Lacks Token-based security support

Ascend's Pipeline ISDN Remote Site Family



Part Numbers

Pipeline 130		MSLP
P130-UBRI-FT1	One Ethernet LAN, one ISDN BRI U interface (NT1), one T1/FT1 CSU/DSU	\$1,995
P130-UBRI-L56	One Ethernet LAN, one ISDN BRI U interface (NT1), one DDS 56Kbps CSU/DSU	\$1,895
P130-LS56-2N	One Ethernet LAN, one DDS 56Kbps CSU/DSU, one Switched 56 CSU/DSU	\$1,995
Pipeline 130 with Secure Access Firewall pre-installed		
P130-FT1-ASA	One Ethernet LAN, one ISDN BRI U interface (NT1), one T1/FT1 CSU/DSU with Secure Access Firewall	\$2995
P130-L56-ASA	One Ethernet LAN, one ISDN BRI U interface (NT1), one DDS 56Kbps CSU/DSU with Secure Access Firewall	\$2895
P130-LS56-2N-ASA	One Ethernet LAN, one DDS 56Kbps CSU/DSU, one Switched 56 CSU/DSU with Secure Access Firewall	\$2995
Pipeline Secure Access Firewall software option only		
P130-SWUP-ASA	Shrink wrapped diskette, manual, and 800 number to call for serial number	\$1,000

Please call your distribution partner to order or to participate in Ascend's demo program.

Why Partner with Ascend?

- **Market leadership** – enhanced name recognition and credibility with your customers
 - **54% dominance of the access concentrator market** (analog & ISDN ports)*
 - **84% of total ISP access server parts worldwide**
- **Ensured Internet interoperability** – 28 of 30 largest ISPs use Ascend's central site products. Assures end user compatibility, shortens VAR sales cycle, and reduces support demands when selling Pipeline's
- **Technology leadership** – more remote access features than any other vendor
- **Complete remote networking solution** with remote and central site products to fit every need

* Source: Dell' Oro Market Research Group, 1996



Remote Networking
Solutions That Work.™

Ascend Communications, Inc.
One Ascend Plaza
1701 Harbor Bay Parkway
Alameda, CA 94502, USA
TEL: 510.769.6001
FAX: 510.747.2300

E-mail: info@ascend.com
Toll Free: 800.621.9578
FAX Server: 415.688.4343
Web site:
<http://www.ascend.com>

© 1996, Ascend Communications, Inc. 07-12
All brands and products are trademarks
of their respective holders. All rights reserved.