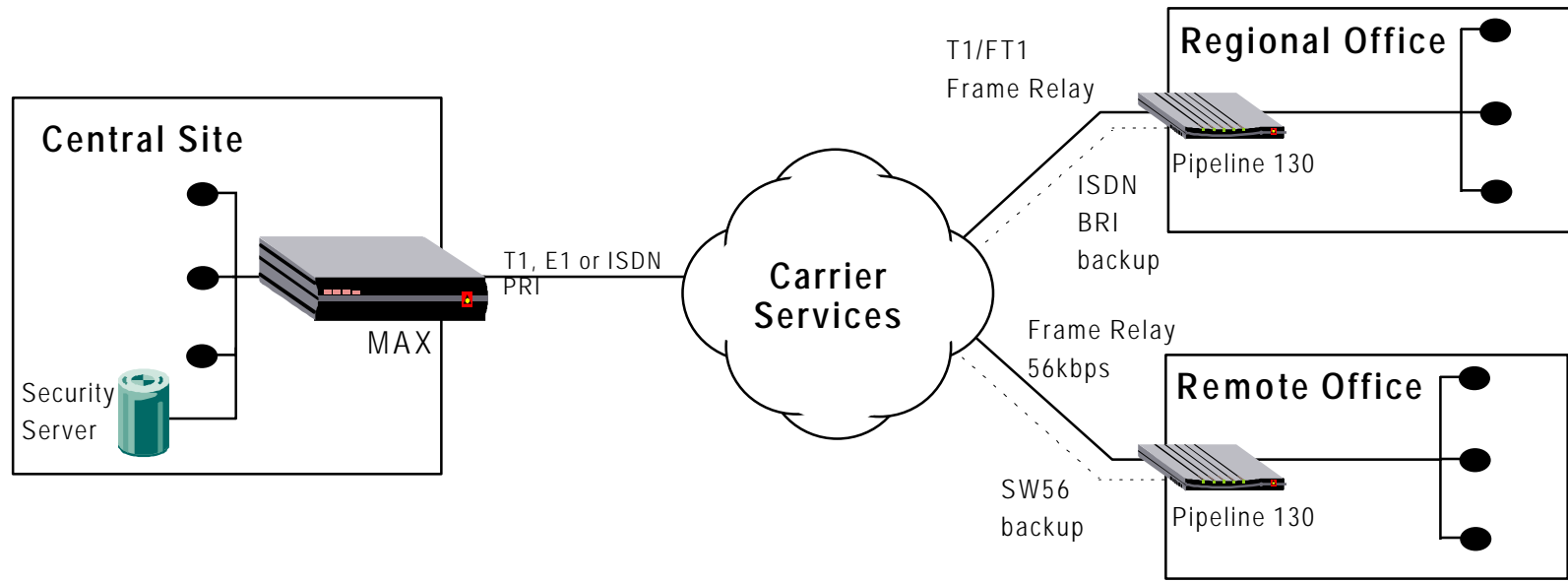


Pipeline 130

Mission-Critical Remote Networking



- ▲ **Leased line access with dial-up backup**
 - Integrated CSU/DSU
 - Network redundancy
- ▲ **Remote management**
 - SNMP, TELNET, SYSLOG
- ▲ **Extensive security**
- ▲ **STAC data compression (over BRI) standard**