

**Ascend**



# Ascend SecureConnect

Network Security

15-10-PR





# Table of Contents

- **Security Objectives**
- **SecureConnect™ Strategy**
- **New Products - Secure Access™ V2**
- **Competition**
- **Pricing**

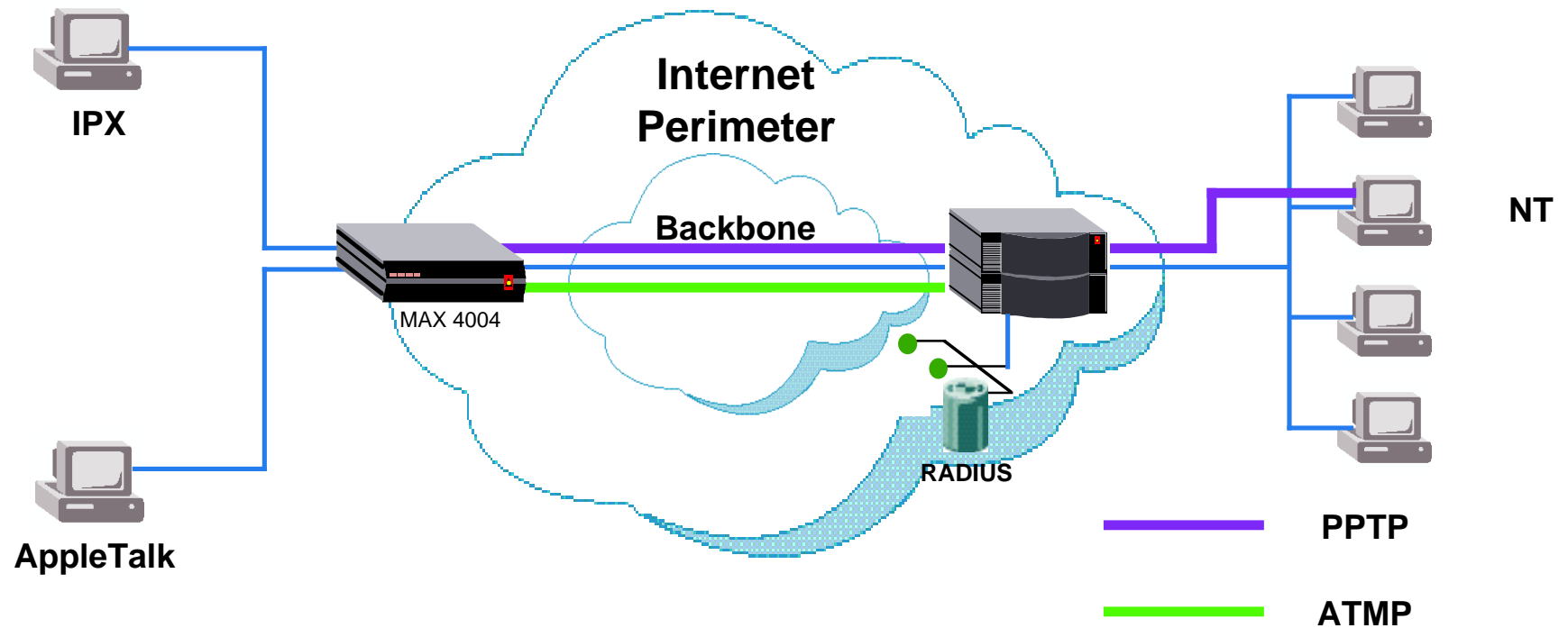


# Ascend End-to-End Security

- **Enable outsourcing of WAN to ISPs**
- **Promote secure telecommuting**
- **Promote secure mobile roaming**
- **Simplify electronic commerce**
- **Leave control of security with corporate I/S**
- **Provides integrated, end-to-end security solution**



# Virtual Private Networks Today

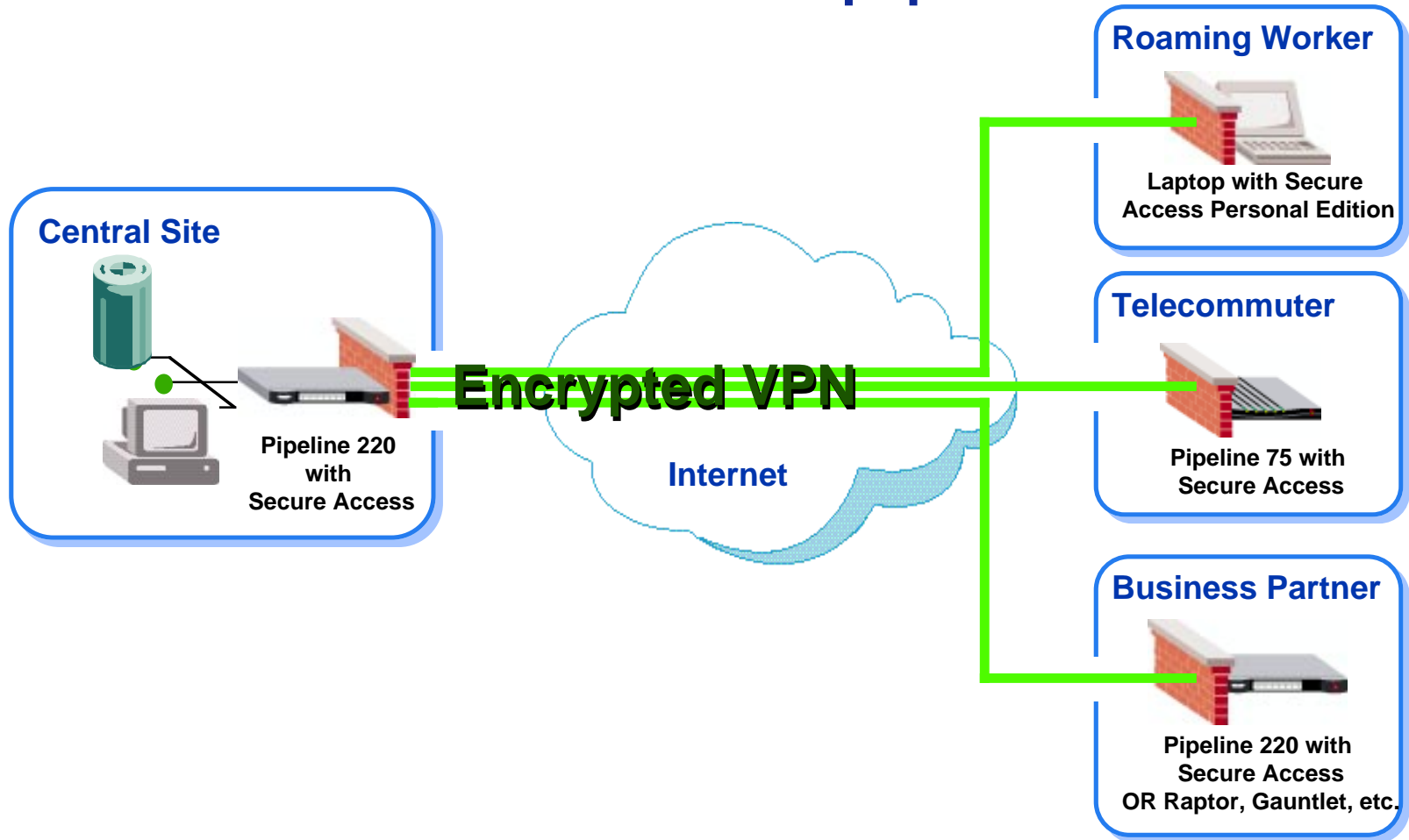


**Virtual Private Networks: Provide tunneling for non-IP protocols,  
but do not provide data privacy nor insure authenticity**



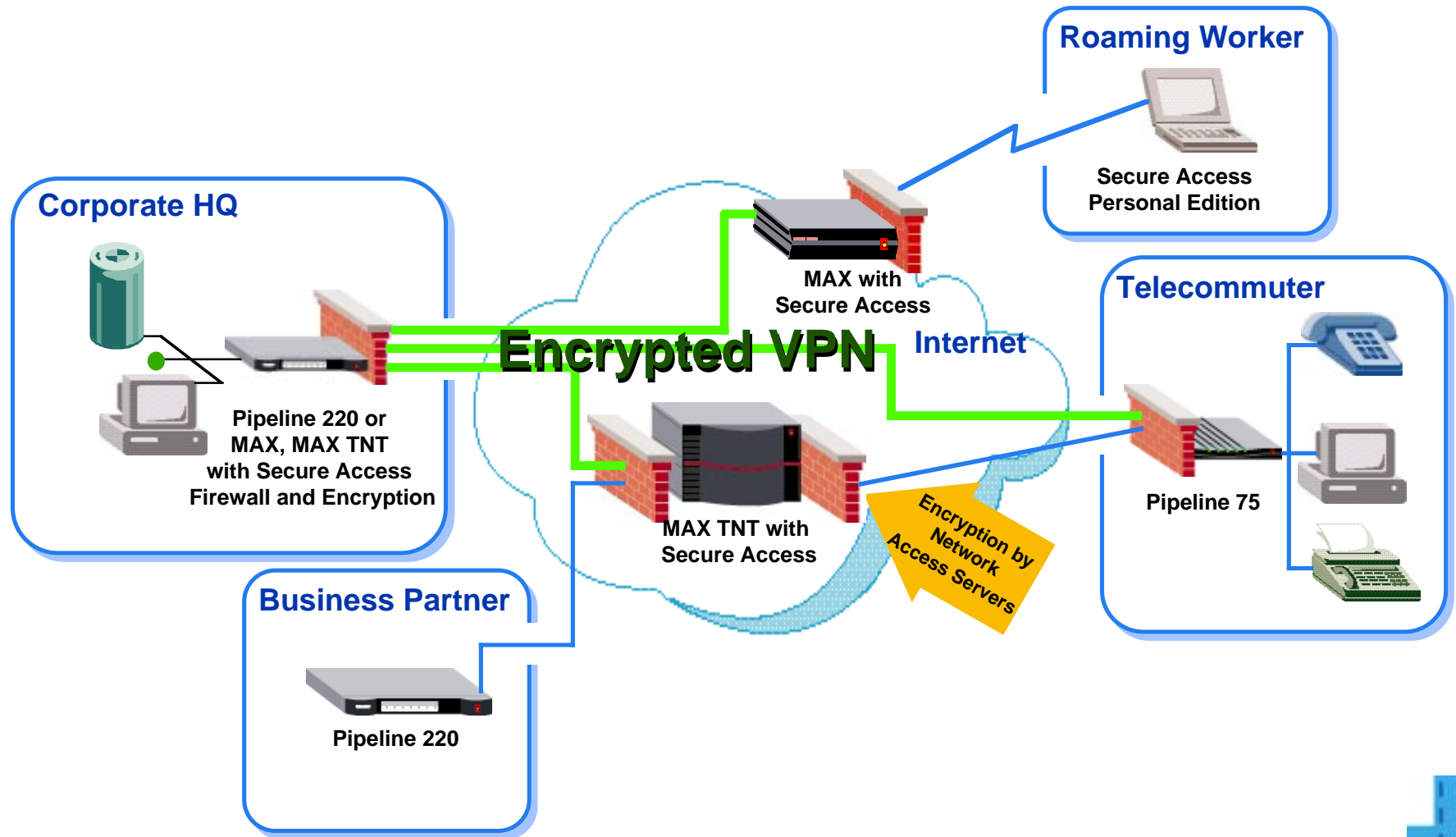
# Encrypted VPN

## Customer Premises Equipment





# Encrypted VPN ISP/Carrier Equipment





# New Products

- **Secure Access Firewall with Encryption**
- **Secure Access Personal Edition**



## Secure Access V2

- Combines firewall with IPSec encryption at edge of Wide Area Network
- Available on Pipeline<sup>®</sup> 220, 50, 75, 85, 130 (Authentication Headers), DSLPipe<sup>™</sup> and on PCs running Windows 95 and Windows NT
- Provides encryption for VPN tunnels: L2TP, ATMP, L2F, IPSec
- Support for DES, 3DES and 40-bit DES
- Trust established via Firewall Control Manager
- Implements IETF Standards — interoperable with other vendors IPSec
- Configuration and key management via Secure Access Manager and Firewall Control Manager





# Secure Access Personal Edition

- **IPSec encryption and firewall in one solution**
- **Supports IPSec standards including DES, 3DES and 40-bit DES**
- **Secure Access Firewall — protects workstation from unwanted hackers while connected to the Internet**
- **Easily configured with Secure Access Manager**
- **Installs as NDIS device driver; completely transparent to applications**
- **Available in bundles of 25 or individual site licenses**
- **Works with stack for Windows 95 or NT client**
- **Key distribution via Secure Access Manager/Firewall Control Manager**

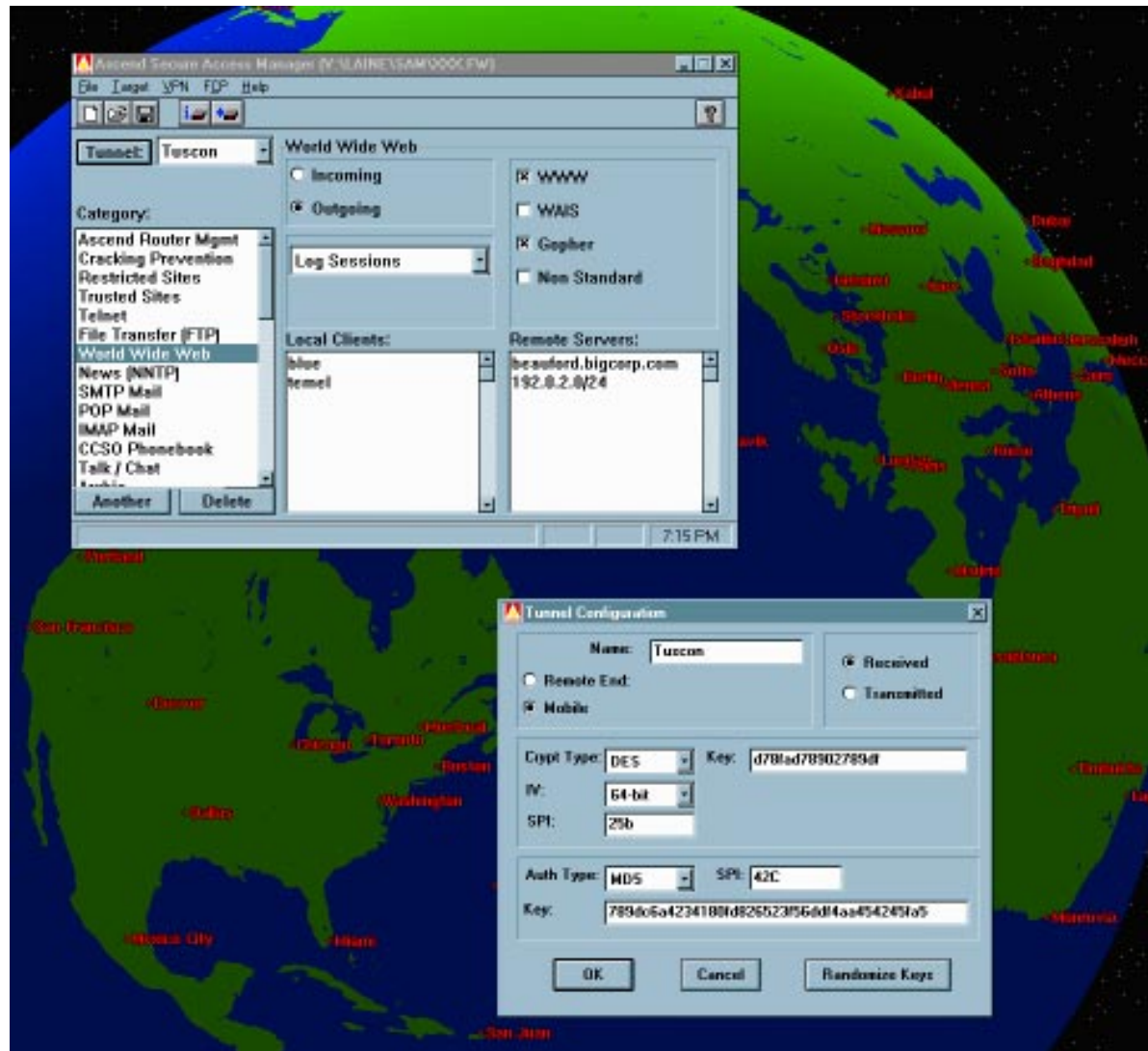


# Key Management

- **Ascend Key Management (requires Secure Access and Ascend Access Control™)**
  - Secure Access Manager configures central site firewall and encryption
  - Secure Access Manager generates keys and firewalls automatically for remote sites
  - Distributed automatically to remote end using customer-supplied secure Web server when user authenticates to Firewall Control Manager
- **Development direction (standards-based key management)**
  - ISAKMP/Oakley key exchange
    - Keys created by each end and exchanged automatically
  - Trust via Firewall Control Manager — or — trust via certificate exchange with support for directory services

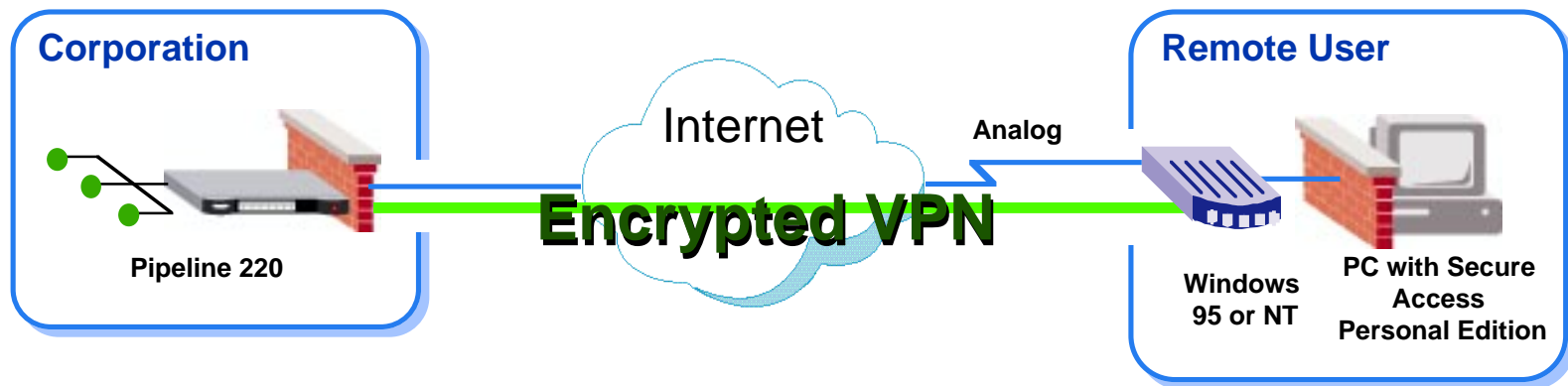


# Secure Access Manager Encrypted Tunnel Configuration



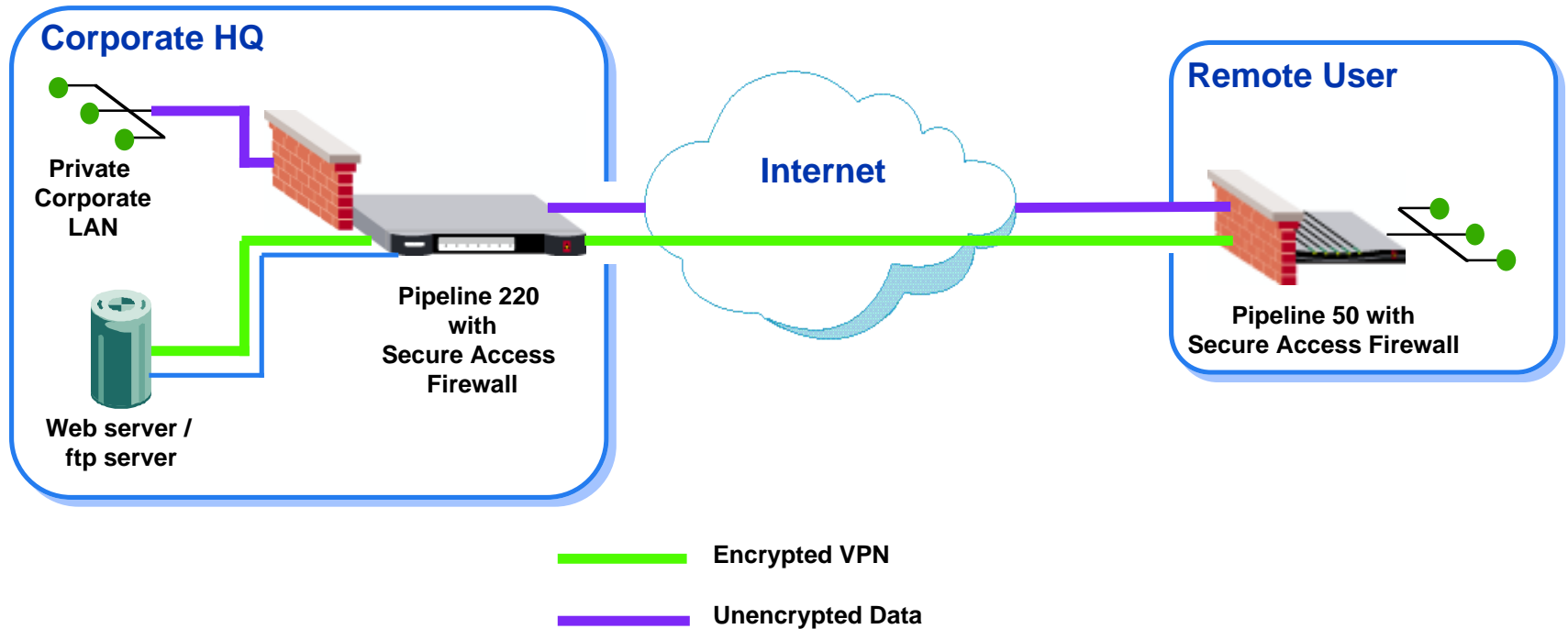


# Secure Mobile Roaming



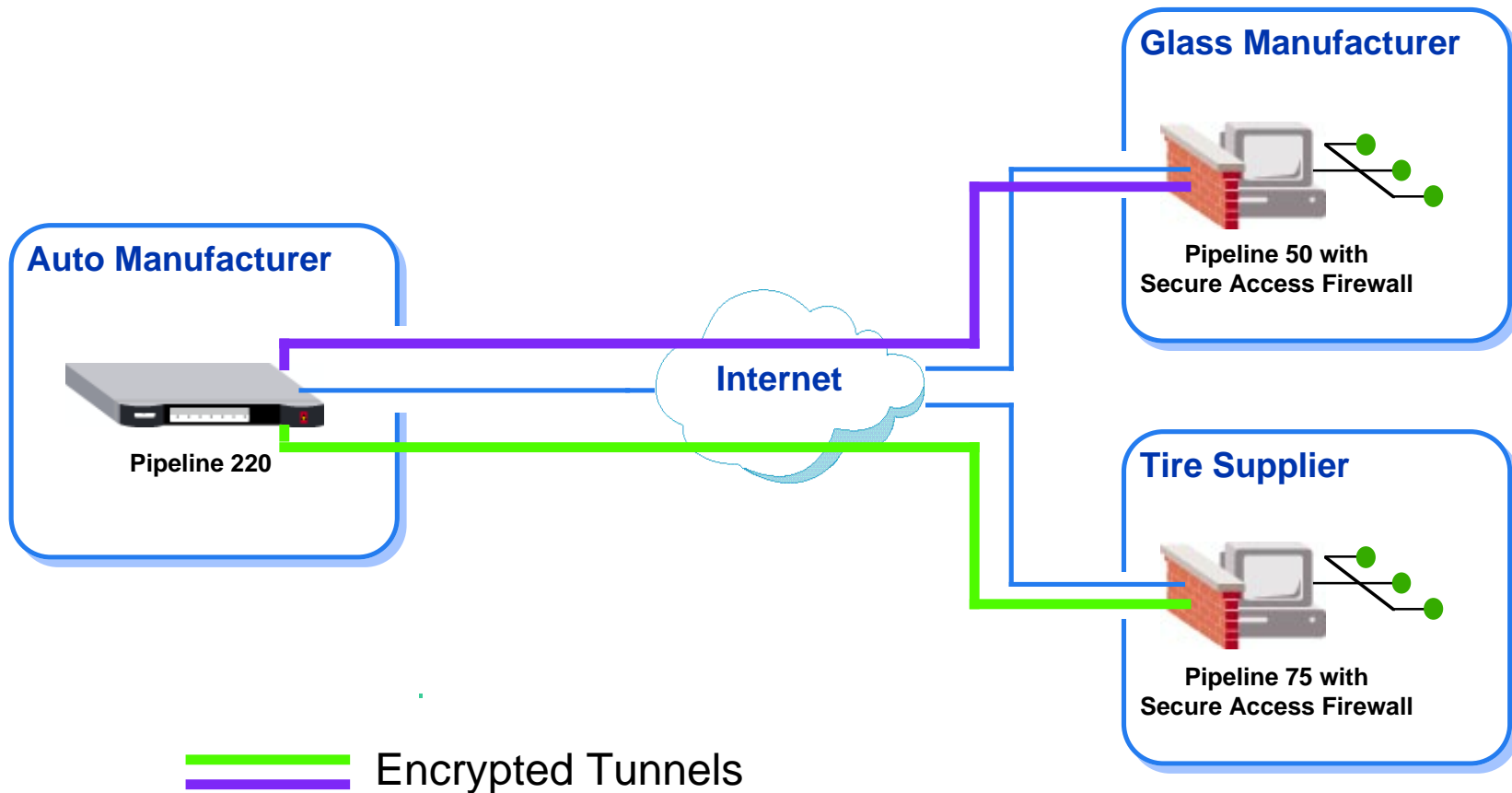


# DMZ in a Box





# Secure Commerce





# Competition

## Networking Vendors

Featured	Ascend	Cisco	Shiva	3Com	Bay
IPSec	Yes	Yes/PIX	No	No	Authentication headers, no encryption
Key Length	40,56,168	56	—	—	—
PC Client	Yes incl. Firewall	No	No	No	No
GUI	Yes	Yes	No	Menu	No
Mobile User	Yes	No	No	No	No
RADIUS Integration	Tunnel Control & Firewall Control	No	No	No	No
Integrated Firewall	Yes	Only via PIX	No	No	No
Cracking prevention	yes	Yes	No	No	No
	By user	No	No	No	No



# Firewall Vendors

<b>Featured</b>	<b>Ascend</b>	<b>Checkpoint</b>	<b>Raptor</b>	<b>Gauntlet</b>
<b>IPSEC</b>	<b>Yes</b>	<b>Yes</b>	<b>Yes</b>	<b>No</b>
<b>PC client</b>	<b>Encryption + Firewall</b>	<b>Encryption</b>	<b>Encryption</b>	<b>No</b>
<b>Integrated Firewall Router</b>	<b>Yes</b>	<b>No</b>	<b>No</b>	<b>No</b>
<b>Platform</b>	<b>Pipeline, MAX,<sup>TM</sup> MAX TNT<sup>TM</sup></b>	<b>NT, Unix</b>	<b>NT, Unix</b>	<b>NT, Unix</b>





# Secure Access V2

## Pricing

Secure Access Model # (pre-installed)	Secure Access Model # (add-on to exiting units)	Description	Price
Secure Access Personal Edition	Not Applicable	Secure Access PC Client for Windows 95, NT – Firewall & Encryption	\$99
P50-1UBRI-ASA P50-1SBRI-ASA	P50-SWUP-ASA	Secure Access for Pipeline 50 – Firewall & Encryption	\$500
P75-1UBRI-ASA P75-1SBRI-ASA	P75-SWUP-ASA	Secure Access for Pipeline 75 – Firewall & Encryption	\$500
P85-1UBRI-ASA P85-1SBRI-ASA	P85-SWUP-ASA	Secure Access for Pipeline 85 – Firewall & Encryption	\$500
P130-L56-ASA P130-FT1-ASA P130-SBRI-V35-ASA P130-LS56-2N-ASA	P130-SWUP-ASA	Secure Access for Pipeline 130 – Firewalls and Authentication Header only*	\$1000
DSL-S-ASA	DSL-S-SWUP-ASA	Secure Access for DSL Pipe – Firewalls and Authentication Header only*	\$1000
P22-SO-ASA	P22-SWUP-ASA	Secure Access for Pipeline 220 – Firewall & Encryption	\$2000

\*Limited BAndwidth Encryption included



# **Ascend Secure Access V2 Summary**

- **Industry standards based IPSec encryption**
- **Encrypts VPNs**
- **Affordably priced**
- **Export solution**
- **Interoperable with other vendors**
- **Includes dynamic firewall**
- **Fosters outsourcing of WAN to ISPs**