



# **Ascend Communications**

## **Secure Access**

*Secure WAN Technology  
from the central site to remote sites*

**International Partner Education**

# Ascend Secure Access

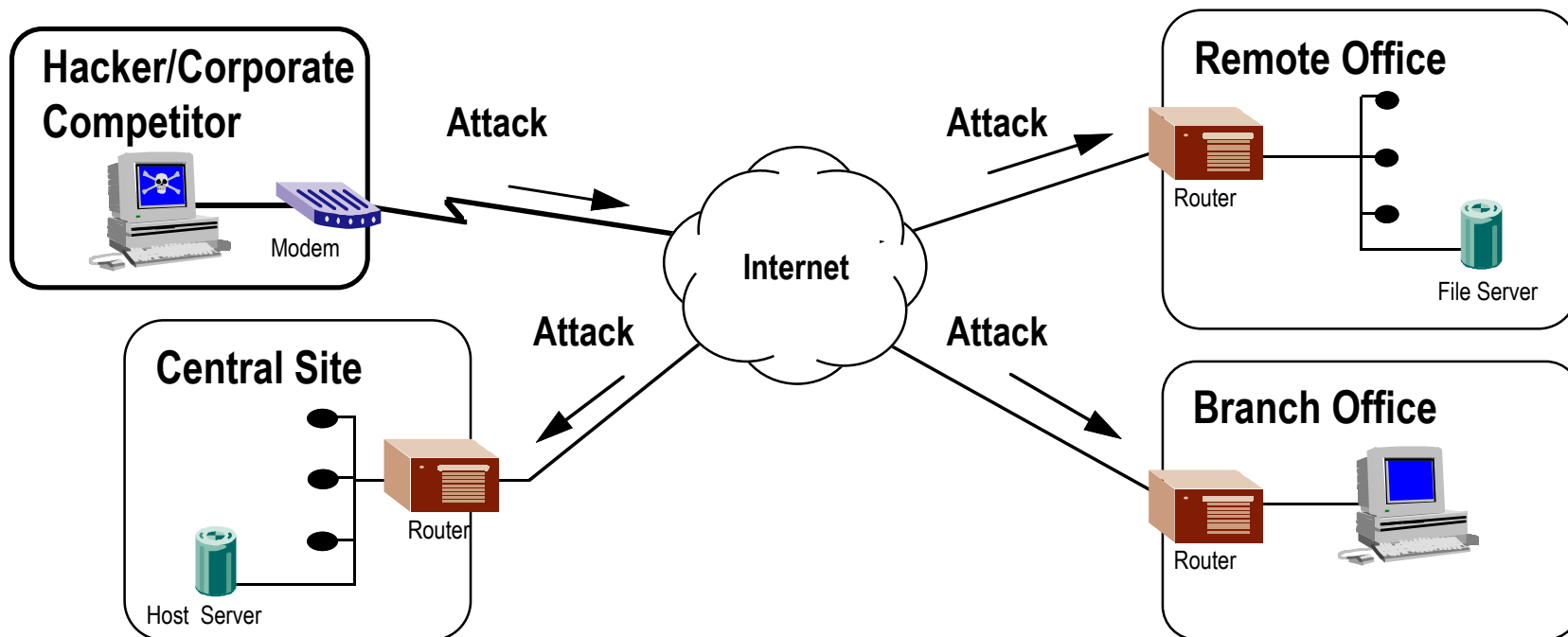
## Contents

- ▲ **Security Threats**
- ▲ **Market Opportunities**
- ▲ **Product Overview**
- ▲ **Competitive Overview**
- ▲ **Summary**

# Ascend Secure Access

Your network will be Attacked... it's just a matter of time!

- ▲ Over 20% of all networks worldwide are attacked\*
- ▲ 59% of attacks come from their competition\*
- ▲ Only 1 in every 500 break-ins is detected\*\*



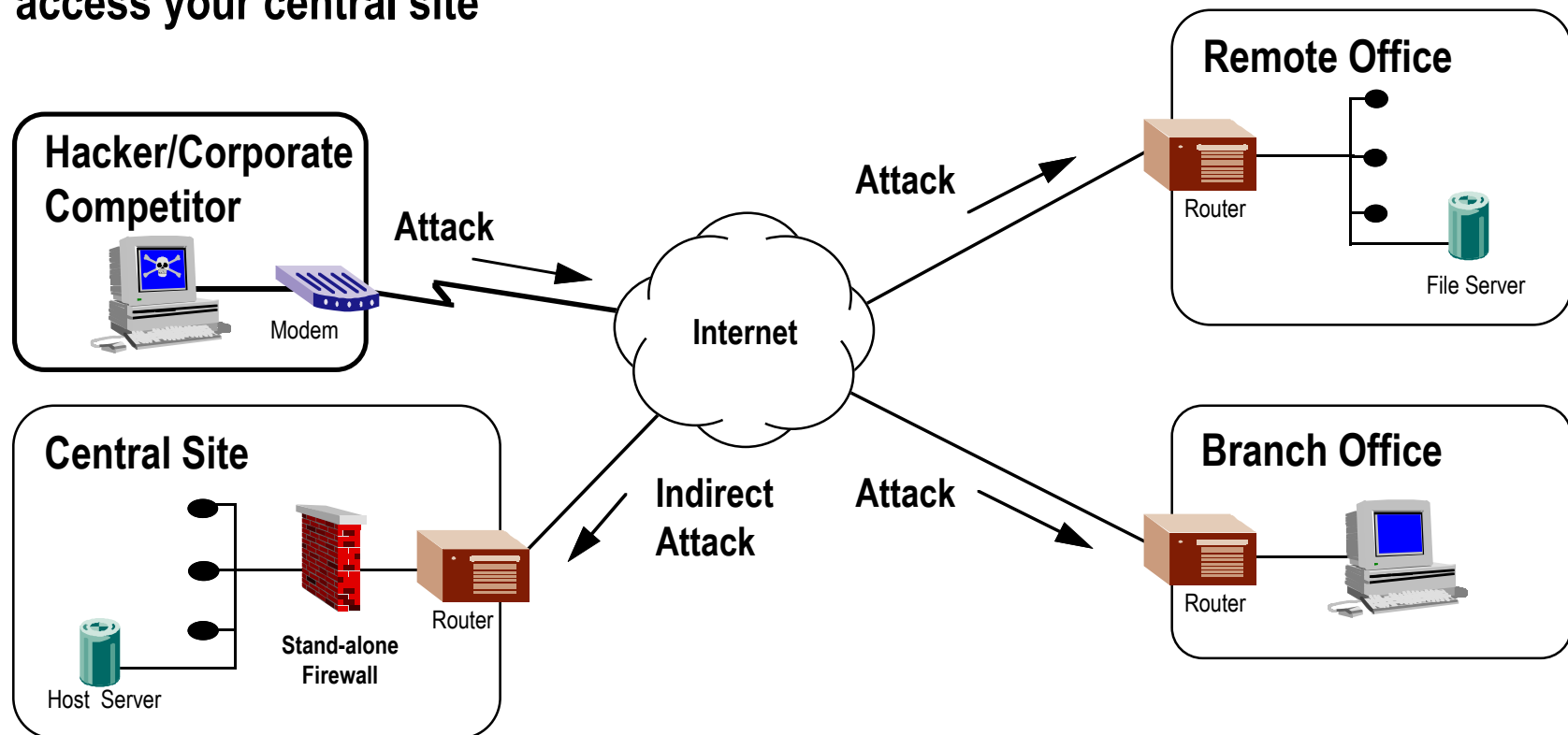
\* Computer Security Institute, San Francisco.

\*\* The Wall Street Journal, May 31, 1996, p. A13.

# Ascend Secure Access

## Today's Solution is Ineffective

- ▲ Stand alone firewalls deployed at central site
- ▲ Remote sites unprotected allowing Attacker to attach to legitimate traffic and access your central site



# Ascend Secure Access

## Market Opportunities

### Yesterday

- **Some Central sites are protected by firewalls**
- **Most Remote sites are NOT protected by firewalls**
- **Hackers Paradise — Half hearted security systems**

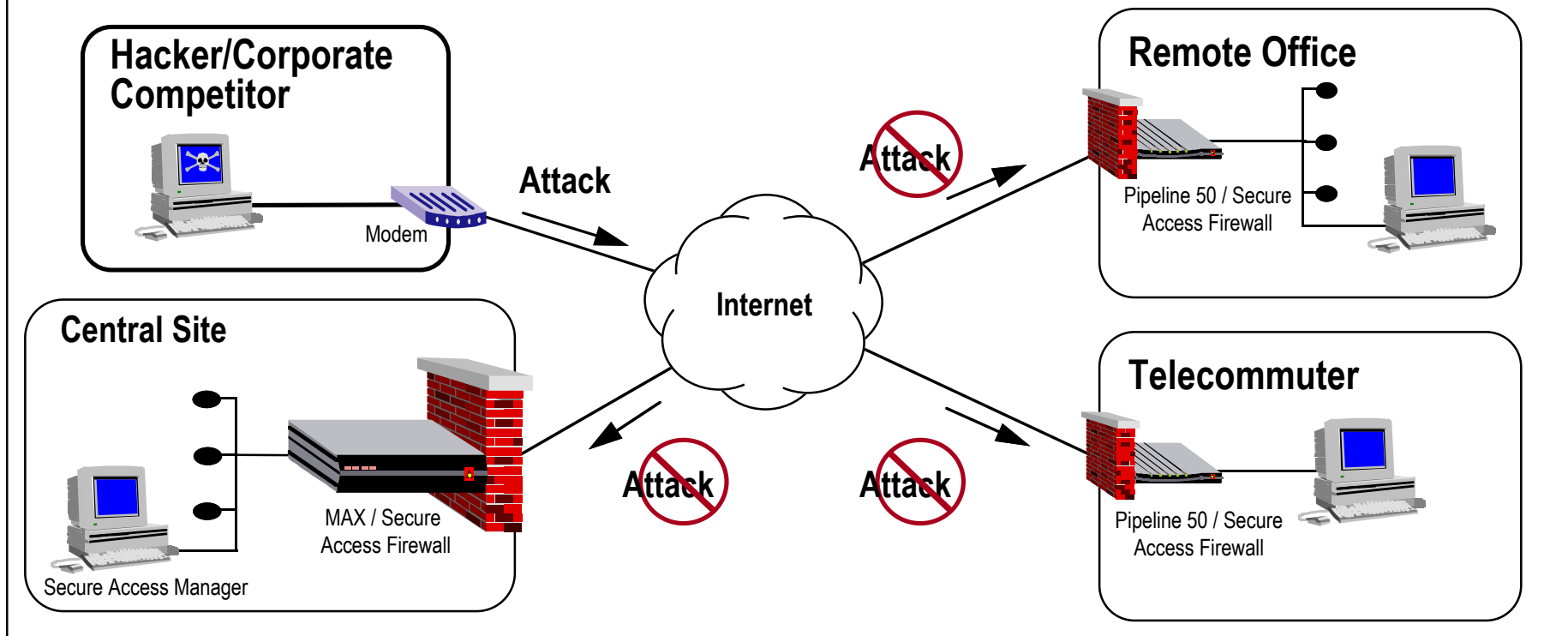
### Today

- **Protect all sites with integrated, dynamic firewall technology from Ascend**

# Ascend Secure Access

## The New Paradigm

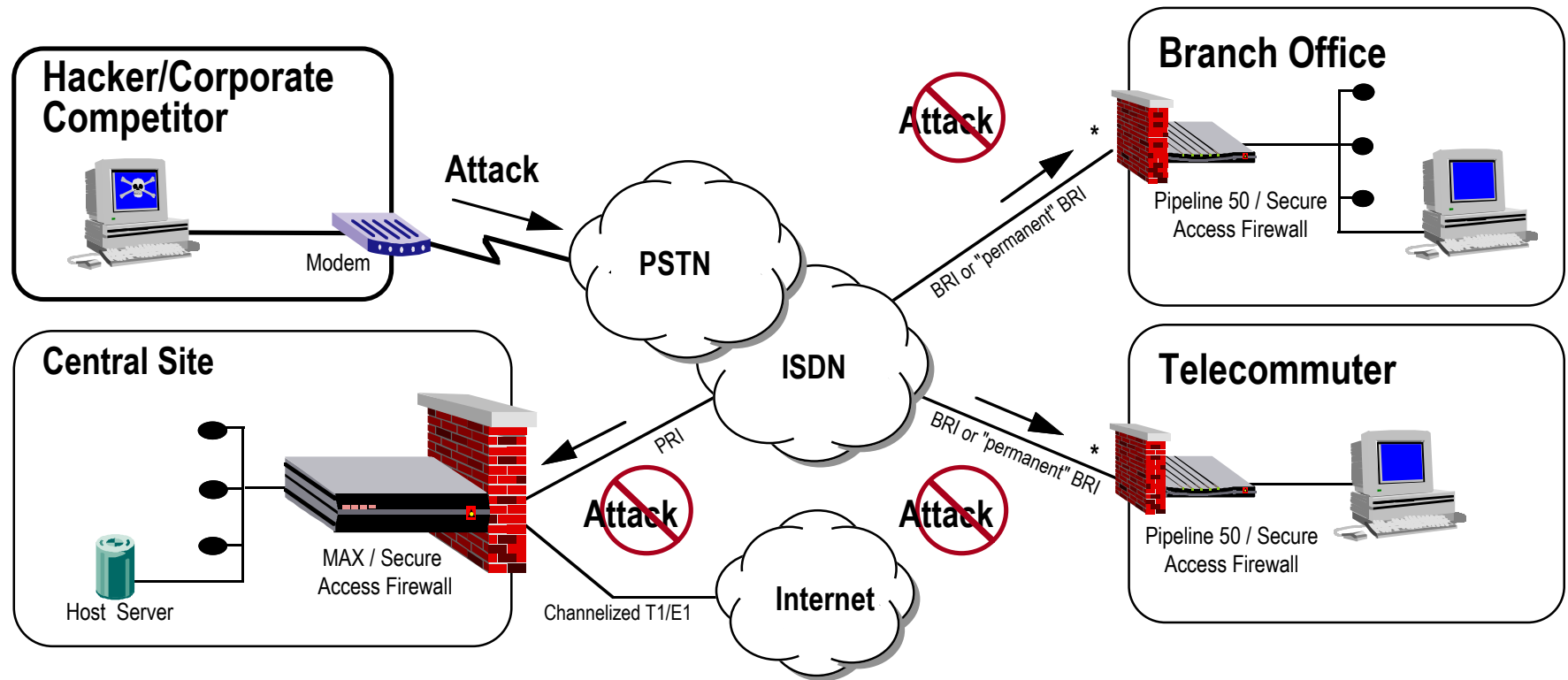
- ▲ Ascend Secure Access protects the central and remote sites
- ▲ Intruders cannot piggy-back on remote traffic and enter corporate LAN
- ▲ Secure Access Manager provides configuration of firewalls from a central site
- ▲ Cost-effective for network-wide deployment



# Ascend Secure Access

## Corporate Application

- ▲ Corporate customers can extend firewall protection to branch offices and for dial-up access users.

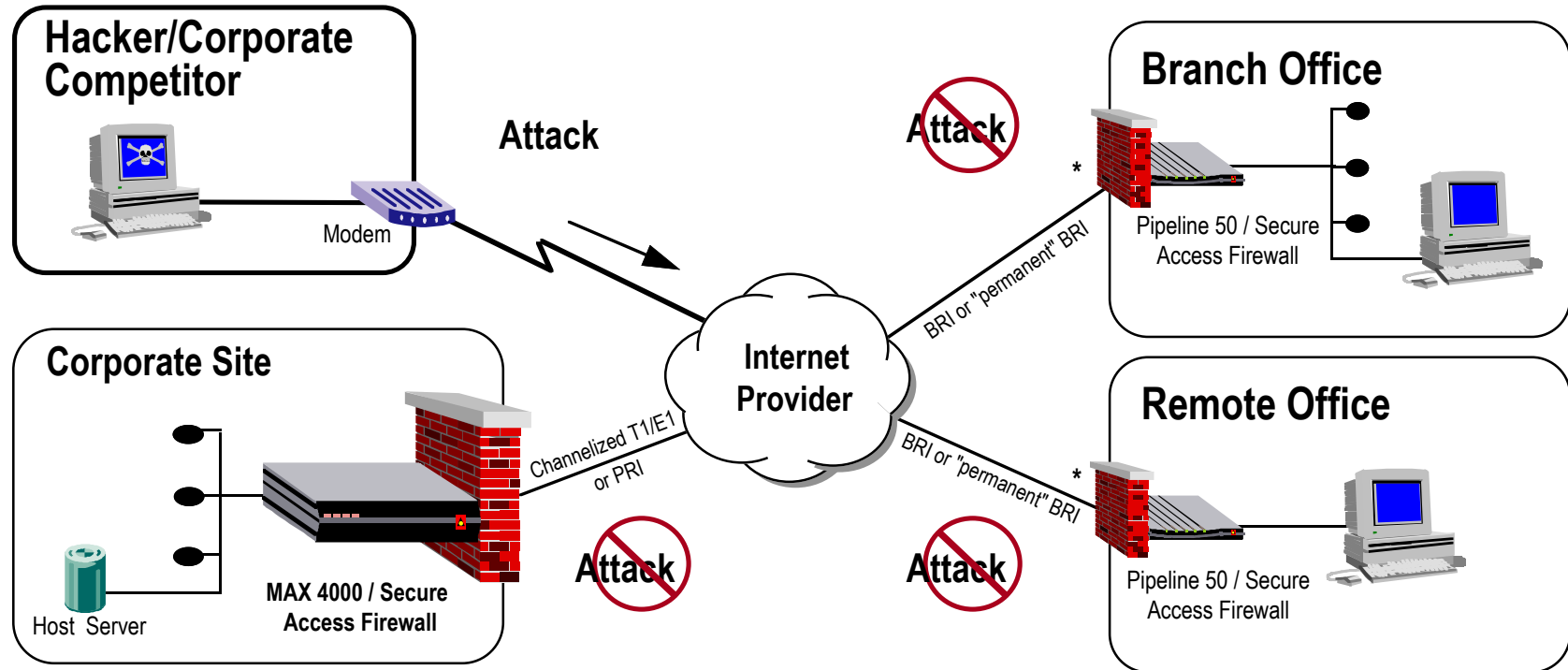


\* Represents Super Digital 64/128, Semi-perment Connections and Nailed BRI

# Ascend Secure Access

## Internet Service Provider/Carrier Applications

- ▲ Carriers and ISPs can sell/lease Pipeline 50s and offer firewall protection to corporate customers as a value-added product
- ▲ Carriers and ISPs can enhance their virtual private network offering to corporate clients



\* Represents Super Digital 64/128, Semi-perment Connections and Nailed BRI



# Ascend Secure Access

## Product Overview

### ▲ Ascend announces Secure Access Pipeline 50 and MAX family

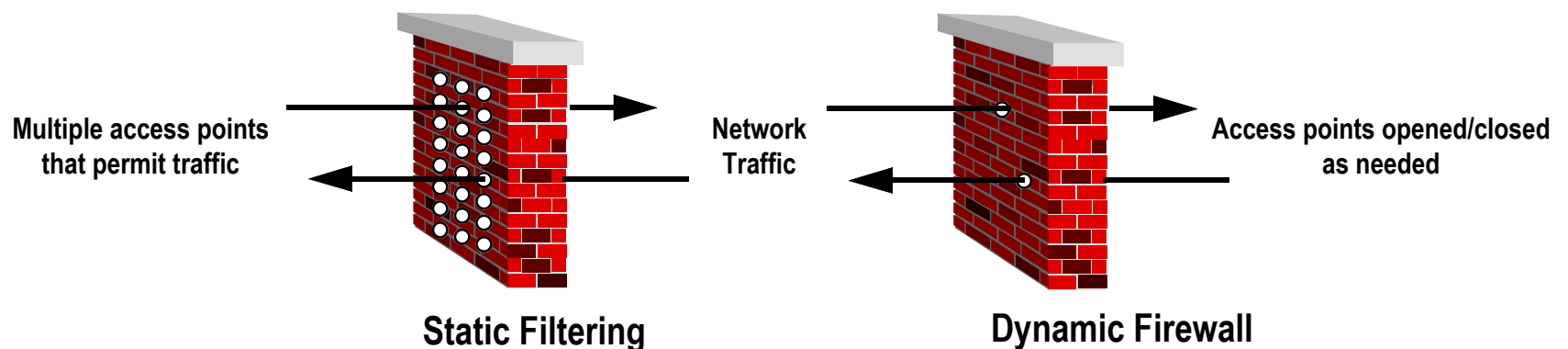
- Secure WAN technology for the corporate wide-area network
- Integrated Firewall extends the company's security policy to all locations
- Secure Access Manager allows managing multiple Secure Access Firewalls from a central site using Windows® -based GUI
- Establishes new price paradigm; allows network-wide deployment

# Ascend Secure Access

## Product Overview

### ▲ State-of-the-art firewall technology integrated into Pipeline 50 and MAX products

- Dynamic firewall technology static filtering
- Dynamically sets rules to adapt to traffic
- Open and close ports only when needed and for only as long as needed
- Specify rules that cover which points open and close and for how long
  - any unspecified traffic is denied



# Ascend Secure Access

## Product Overview

### ▲ Firewall granularity

- Network addresses, host names
- Protocols - UDP, TCP, ICMP
- Source/Destination ports
- Direction - send/receive
- TCP session “state”
  - start, acknowledgment, reset, establish, end
- Application level
  - TFTP, FTP, SATAN probe, Source Routing, Anti-Spoofing, Telnet, WWW, NNTP, SMTP, POP Mail, Talk/Chat, Archie, Finger, Whois, UNIX utilities, RealAudio, Secure Shell, X.11, UUCP, Time Services, IPsec, PPP tunnels, Ping/Traceroute, SNMP and more
  - Fully extensible

# Ascend Secure Access

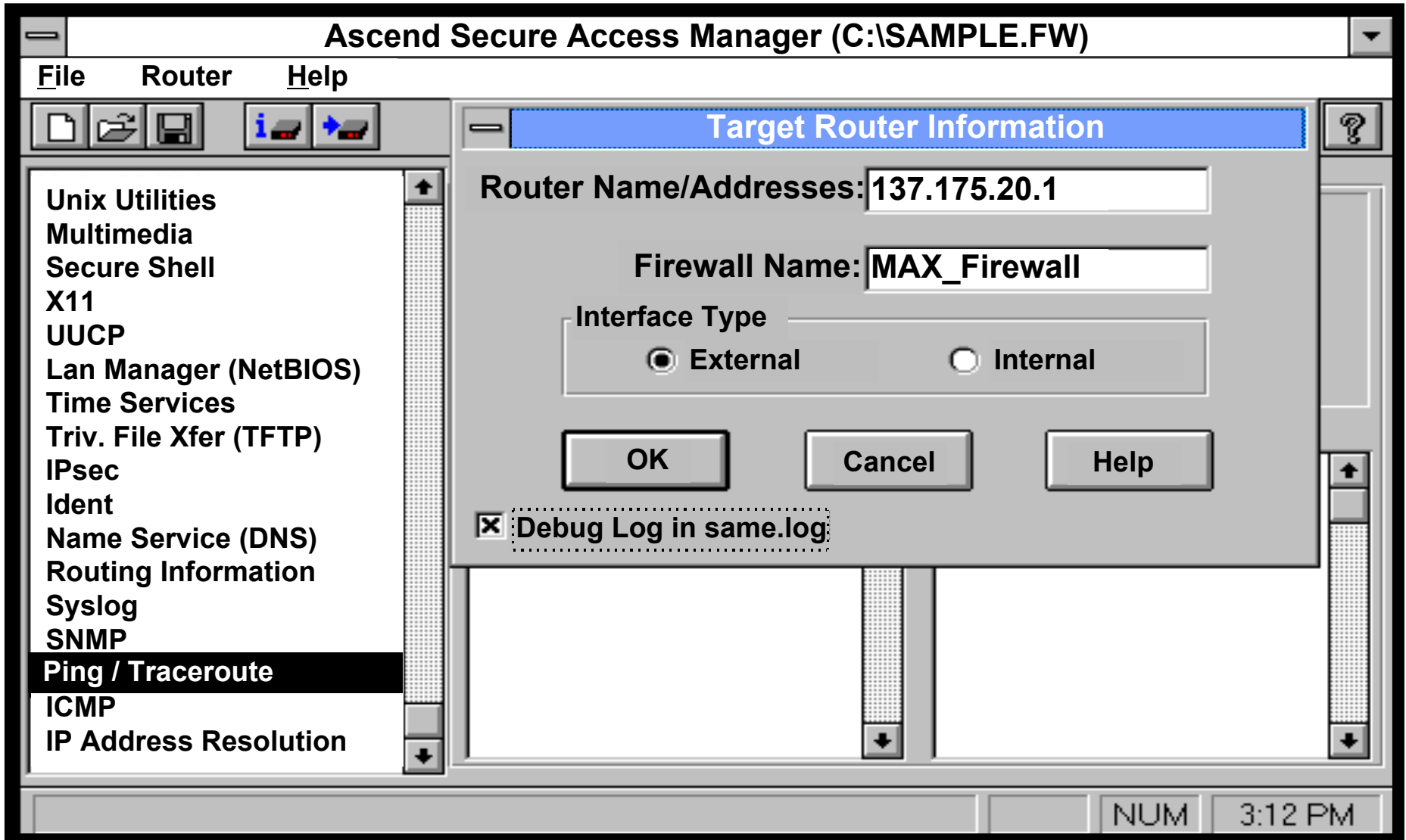
## Product Overview

### **Secure Access Manager**

- User friendly applications to manage and configure Secure Access firewalls centrally
- Supports Windows 3.X, Windows '95, and Windows NT
- Manage all Secure Access Firewalls from a central site
- Provides comprehensive monitoring and logging
  - Customizable reporting of activities
  - Provides audit trail on would-be intruders
  - Centralized reporting of firewall activity

# Ascend Secure Access

## Product Overview



# Ascend Secure Access

## Competitive Overview

▲ Only Ascend provides Integrated Firewall and Router

	Cisco	USR	3COM	Checkpoint	Harris	Raptor	ASCEND
User Authentication	X	X	X	X	X	X	X
Stand-alone Firewall	X			X	X	X	
Stand-alone Router	X	X	X				X
Integrated Router and Firewall							X

# Ascend Secure Access

## Summary

- ▶ **State-of-the-art WAN security technology that extends the corporate security policy to remote sites**
- ▶ **Fully integrated firewall in Pipeline 50 and MAX product family**
- ▶ **Transparent to “authenticated” users**
- ▶ **Easy to configure and manage for the enterprise network**
- ▶ **ISPs, Carriers and Corporate customers can benefit**



**Ascend. Remote Networking**  
**Solutions That Work.™**