

Ascend's Pipeline Product Family

Ascend's Pipeline Product Family

The most comprehensive product line for:

- ▲ **Telecommuting**
- ▲ **Remote access**
- ▲ **Internet access**
- ▲ **Small Office/Home Office (SOHO)**



Contents

▲ **Ascend's Pipeline Product Family**

- Overview

▲ **Pipeline 25-*Fx***

- Telecommuting & Small Office/
Home Office

▲ **Pipeline 25-*Px***

- Internet Access
- Ascend's Dynamic IP Access
(ADIA)

▲ **Pipeline 50**

- Internet & Remote LAN Access

▲ **Pipeline 75**

- Telecommuting

▲ **Pipeline Family**

- Common Features
- Ascend - Total Solutions
- Overview

▲ **Competitive Products Overview**

- Competitive Analysis

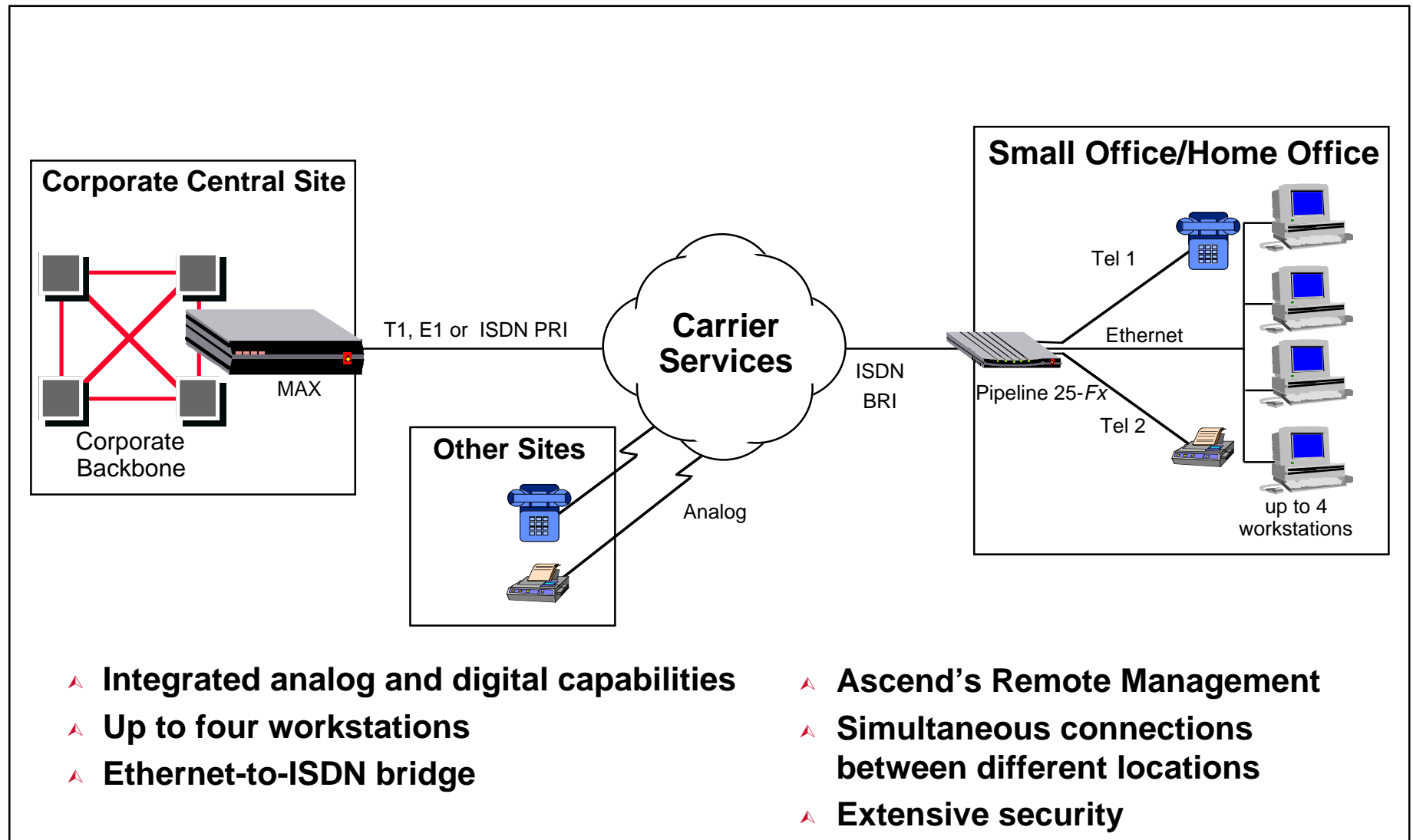
Pipeline Product Family

Overview

- ▲ **High speed dial-up access**
 - ISDN, SW56
- ▲ **Leased line access**
 - Frame Relay, DDS56
- ▲ **Routing and bridging**
- ▲ **Security and management**
- ▲ **Bandwidth management**
- ▲ **Java-based Pipeline Configurator**

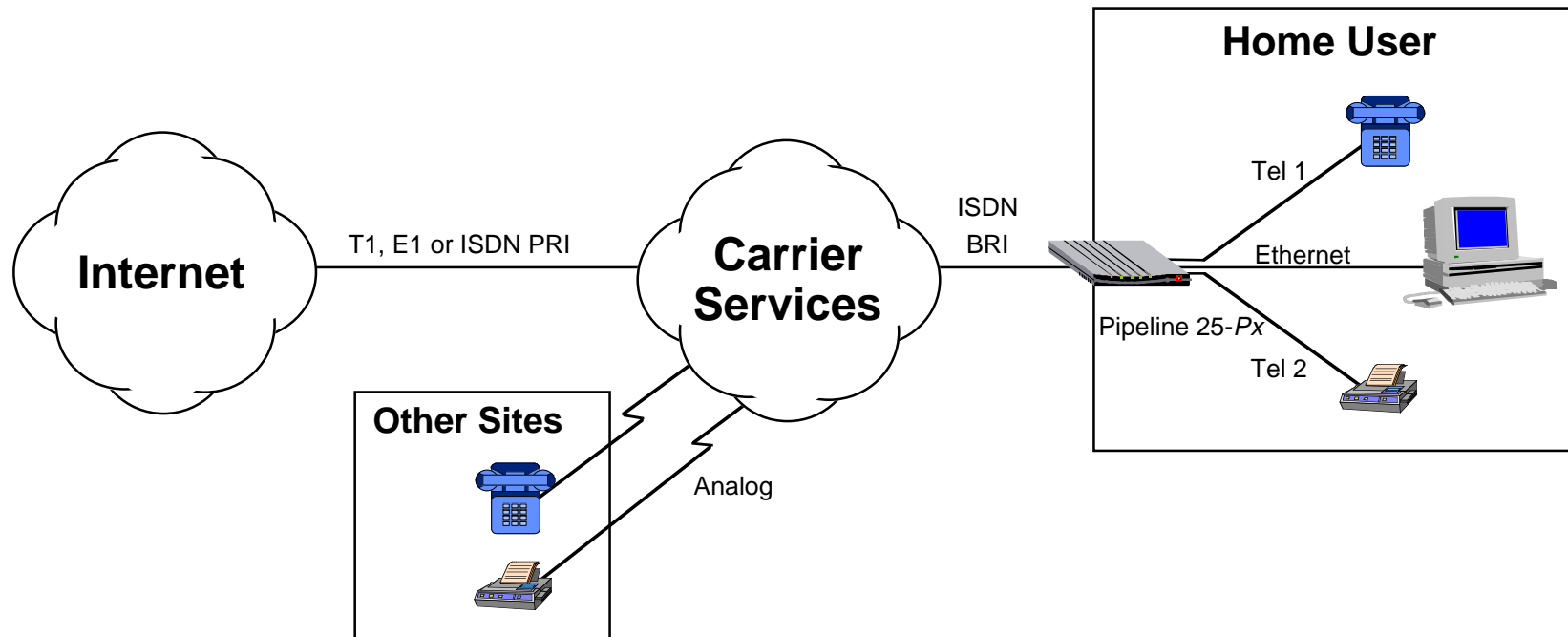
Pipeline 25-Fx

Telecommuting & Small Office/Home Office



Pipeline 25-Px

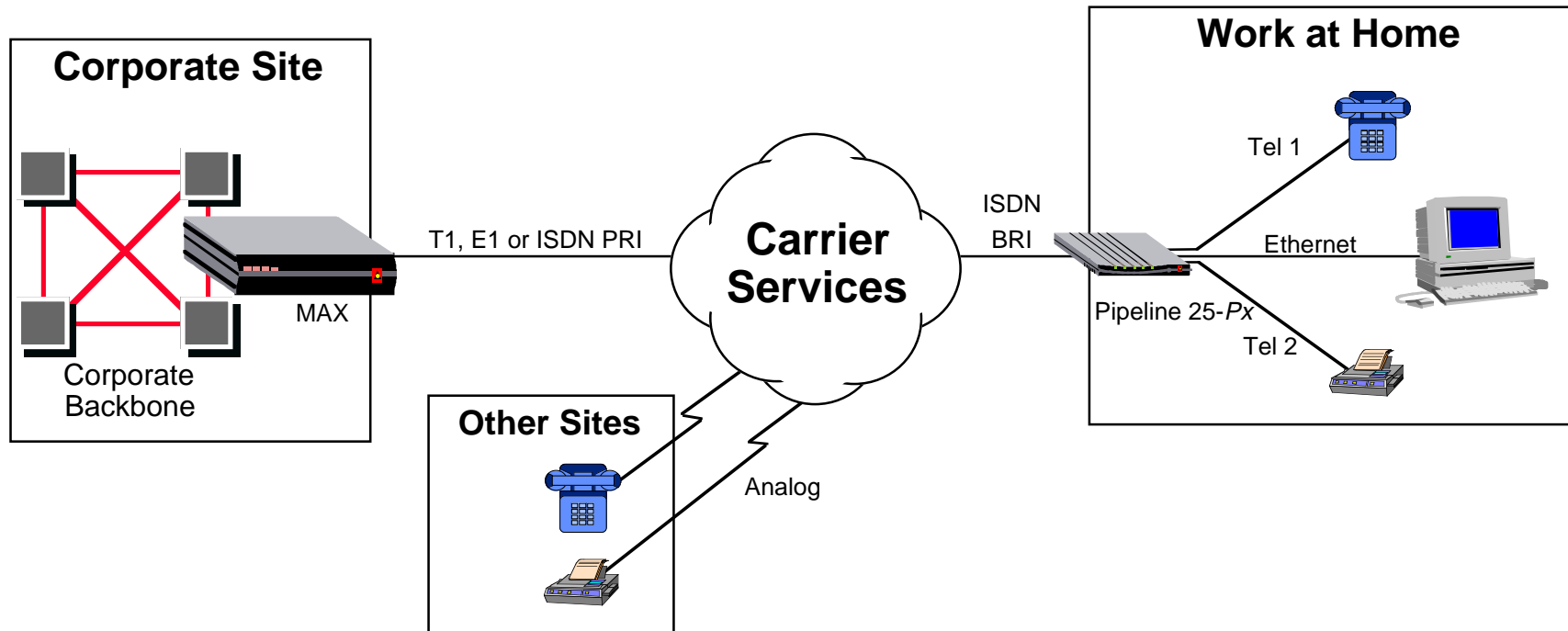
Internet Access



- ▲ Single user - single destination
- ▲ ADIA for a “dynamically assigned” IP address
- ▲ High-speed ISDN access
- ▲ Integrated analog and digital capabilities
- ▲ Ascend’s Remote Management
- ▲ Extensive security

Pipeline 25-Px

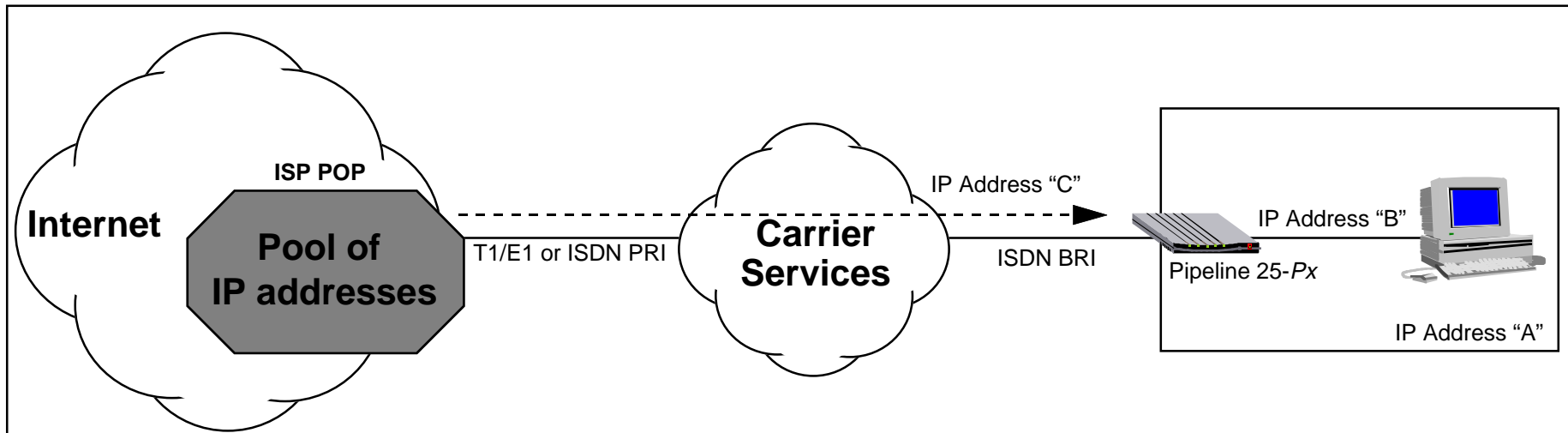
Telecommuting



- ▲ **Single user, single destination**
- ▲ **ADIA for a “dynamically assigned” IP address**
- ▲ **High-Speed ISDN access**
- ▲ **Integrated analog and digital capabilities**
- ▲ **Ascend’s Remote Management**
- ▲ **Extensive security**

Pipeline 25-Px

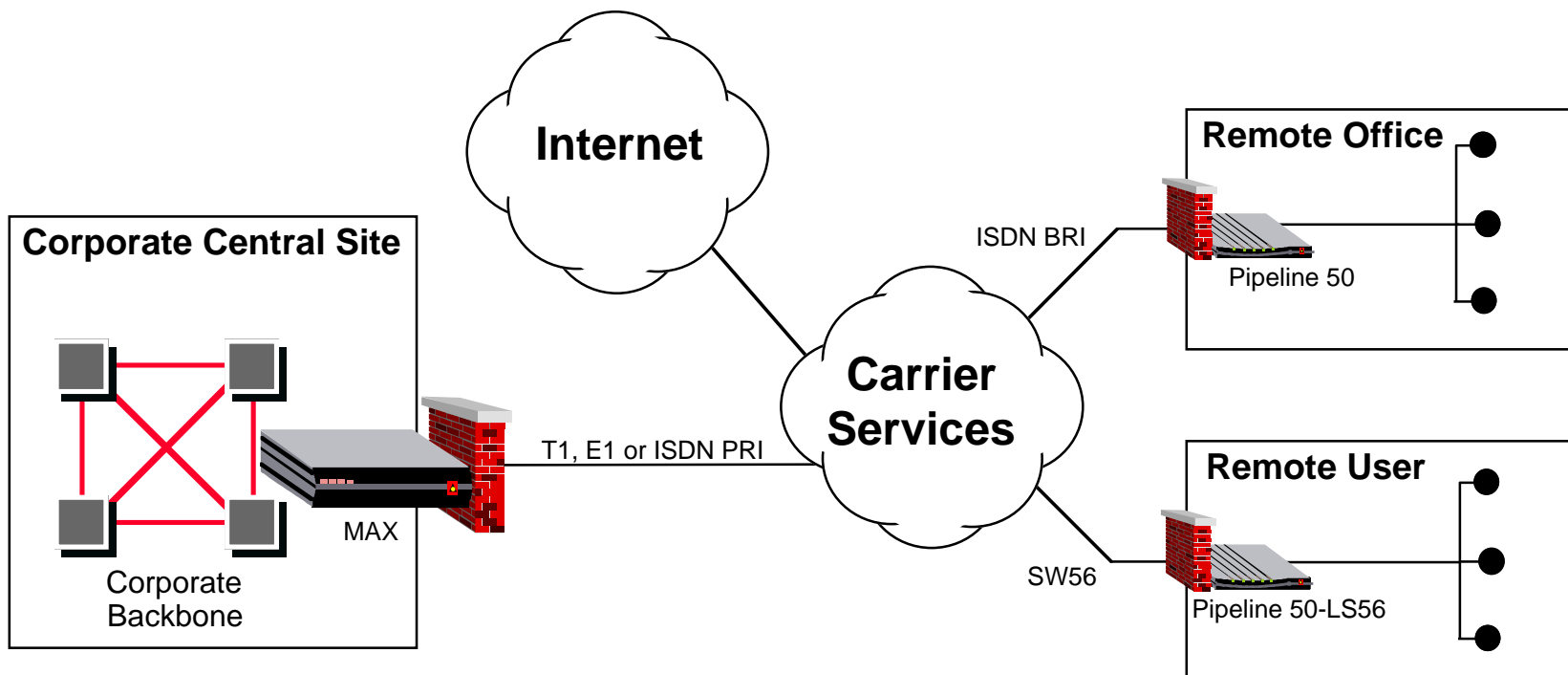
Ascend's Dynamic IP Access (ADIA)



- ▲ Pipeline 25-Px dials into an ISP POP (or a corporate central site) with address "A" on the workstation and address "B" on its Ethernet interface
- ▲ The POP assigns address "C" from a pool of available addresses to the WAN interface of the Pipeline 25-Px
- ▲ Pipeline 25-Px uses ADIA to switch between addresses "B" and "C" to pass traffic from the workstation's IP address "A" to the network and back from the network to the workstation
- ▲ ADIA is not proprietary - it works with Pipeline 25-Px to Ascend, or Pipeline 25-Px to other vendors' products

Pipeline 50

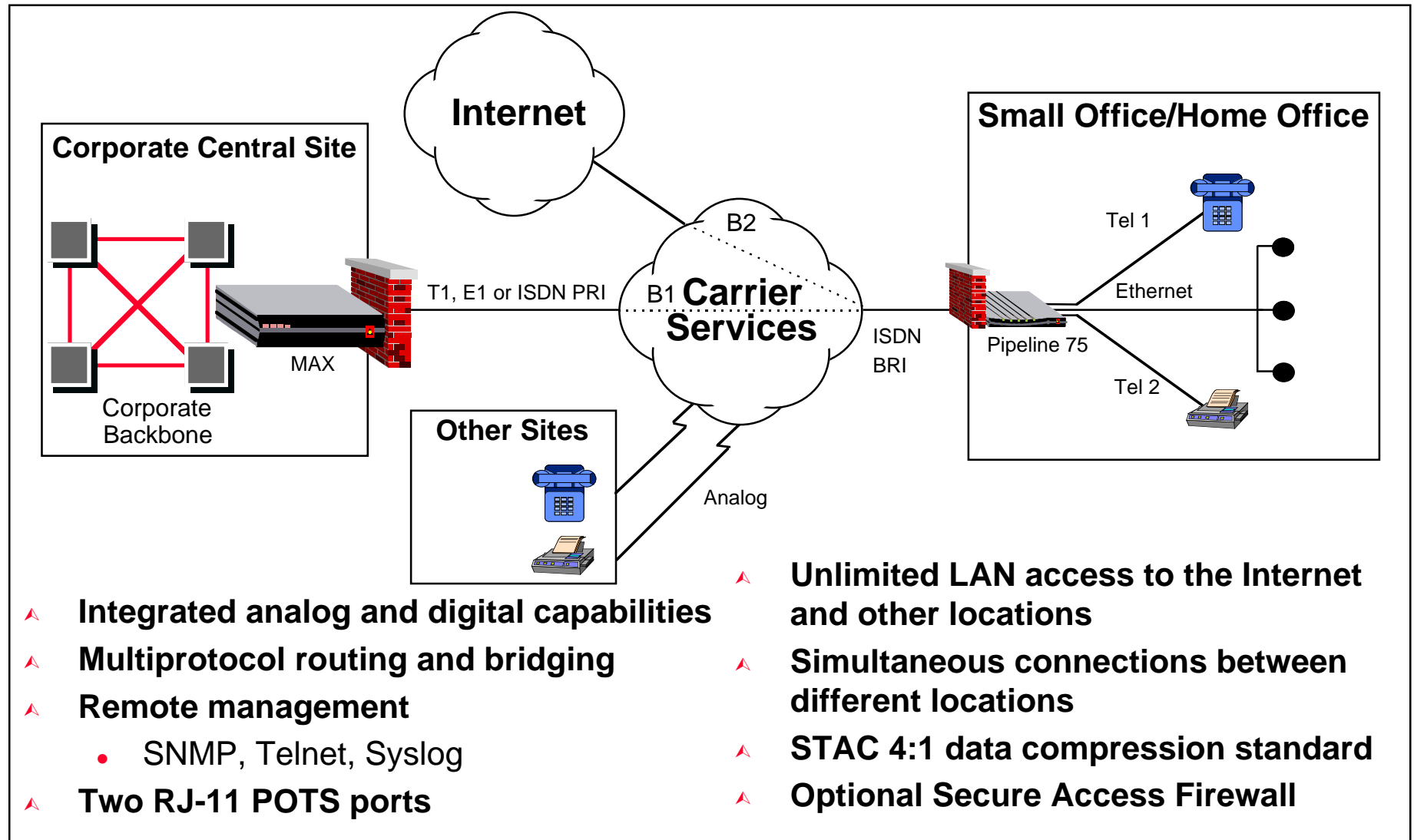
Internet & Remote LAN Access



- ▲ Multiprotocol routing and bridging
- ▲ Ascend's Remote Management
 - SNMP, Telnet, Syslog
- ▲ Unlimited LAN Access to the Internet and other locations
- ▲ STAC 4:1 data compression standard
- ▲ Simultaneous connections between different locations
- ▲ Optional Secure Access Firewall

Pipeline 75

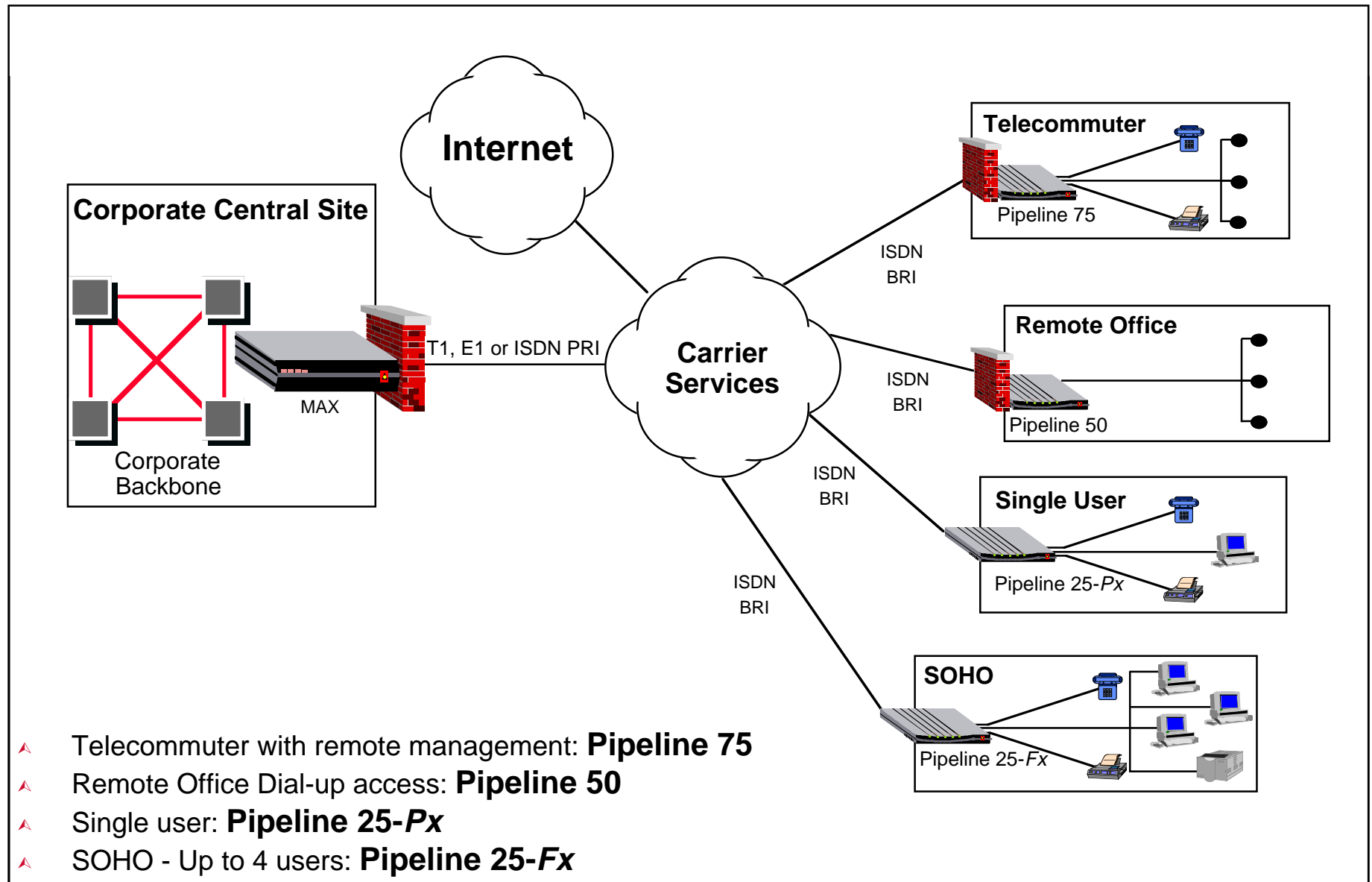
Telecommuting



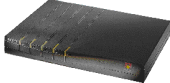
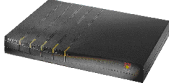


Common Pipeline Product Features

- ▶ **ISDN BRI WAN access**
- ▶ **Ethernet LAN access**
- ▶ **Integrated bandwidth on demand**
 - B-Channels are added or subtracted based on need
- ▶ **WAN protocols: PPP, MP, MP+**
- ▶ **Comprehensive security**
 - Industry standard - PAP, CHAP
- ▶ **Remote management**
 - Ascend's Remote Management protocol
- ▶ **Flash EEPROM**
 - Simplifies software upgrades

Ascend - Total Solutions



Pipeline Family Overview

	   				Functionality
	Pipeline 25-Fx	Pipeline 25-Px	Pipeline 50	Pipeline 75	
Starting List	\$595	\$695	\$895	\$995	
Bridging	Yes	No	Yes	Yes	
IP Routing	No	Yes	Yes	Yes	
IPX Routing	No	No	Yes	Yes	
PAP & CHAP Security	Yes	Yes	Yes	Yes	
POTS	2 RJ-11	2 RJ-11	No	2 RJ-11	
S/T Interface	Yes	Yes	Yes	Yes	
U Interface	Yes	Yes	Yes	Yes	
Number of users	Up to 4	1	Unlimited	Unlimited	
PPP	Yes	Yes	Yes	Yes	
MultiLink PPP (RFC 1717)	Yes	Yes	Yes	Yes	
MP+	Yes	Yes	Yes	Yes	
SNMP	No	No	Yes	Yes	
Data Compression	No	No	Yes	Yes	
Comparative List Price IP and/or IPX Routing ISDN U Interface Compression and Multiple Users	\$595	\$695	\$895	\$995	

Competitive Product Overview

Competitive Analysis

	Ascend Pipeline 25Fx	Ascend Pipeline 75	Bay Networks Clam	3Com OCR 520**	Cisco 766	Motorola Vanguard 312	Shiva AccessPort
Price							
Price-Base	\$595	\$995	\$1,195	\$1,295	\$799	\$1,195	\$1,495
Fully Configured Price	\$595	\$1,495	\$1,395	\$1,295	\$1,250	\$1,495	\$1,495
Key Features							
Bridging	Yes	Yes	Yes	Yes	Yes	No	Yes
IP Routing	No	Yes	Yes	Yes	Yes	Yes	Yes
IPX Routing	No	Yes	Yes	Yes	Yes	\$300 Option	Yes
Analog phone jacks (RJ11)	2	2	1 (\$200)	1	2	2	2
Advanced Calling features	Yes	Yes	No	No	Yes	Yes	Limited
Multi-User/Unlimited	4	Unlimited	Yes	Yes	4 (>4 =\$300)	Yes	Yes
Multilink PPP Support	Yes	Yes	No	No	Yes	Yes	Yes
SNMP Support	No	Yes	Yes	Yes	Yes	Yes	Yes
Stac Data Compression	No	Yes	Yes	Proprietary	\$150	Proprietary	No
Security							
PAP & CHAP	Yes	Yes	Yes	Yes	Yes	Yes	Yes
Token-based Security	Yes	Yes	No	No	No	No	No
Dynamic Firewall Support	No	Optional	No	No	No	No	No

** Office Connect Remote 520

Competitive Product Overview

Competitive Analysis

	Ascend Pipeline 50	Bay Networks Clam	3Com AB 500	3Com OCR 520**	Motorola Vanguard 311	Cisco 1004	Shiva AccessPort
Price							
Price-Base	\$895	\$1,195	\$1,595	\$1,295	\$995	\$1,400	\$1,495
Fully Configured Price	\$1,395	\$1,195	\$1,595	\$1,295	\$1,295		\$1,495
Key Features							
Bridging	Yes	Yes	No	Yes	No	Yes	Yes
IP Routing	Yes	Yes	No	Yes	Yes	Optional \$	Yes
IPX Routing	Yes	Yes	No	Yes	\$300 Option	Optional \$	Yes
Multi-User/Unlimited	Unlimited	Yes	Yes	Yes	Unlimited	Yes	Yes
PPP Support	Yes	Yes	Yes	Yes	Yes	Yes	Yes
MP Support	Yes	No	No?	No	Yes	Yes	Yes
SNMP Support	Yes	Yes	Yes	Yes	Yes	Yes	Yes
Stac Data Compression	Yes	Yes	No	Not STAC	Not Stac	No?	No
Security							
PAP & CHAP	Yes	Yes	Yes	Yes	Yes	Yes	Yes
Token-based Security	Yes	No	No	No	No	No	No
Dynamic Firewall Support	Optional	No	No	No	No	No	No

Prices current as of 11/96 and subject to change.