

Ascend



Pipeline 220



Bert Forbes

15-09-PR





Pipeline 220

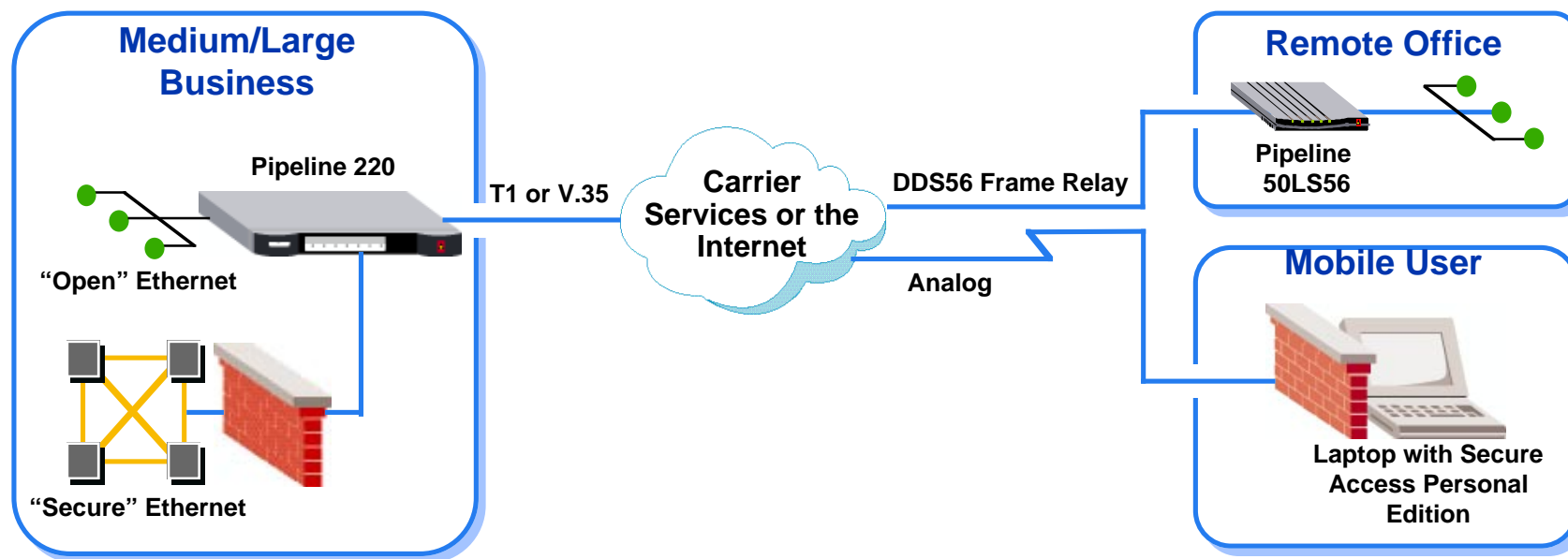
Contents

- Applications
- Product Overview
- Standard Features
- Optional Features
- Target Customers
- Competitive Analysis
- Pricing and Availability



Pipeline 220 Applications

Dual Ethernet - Secure Access 2.0

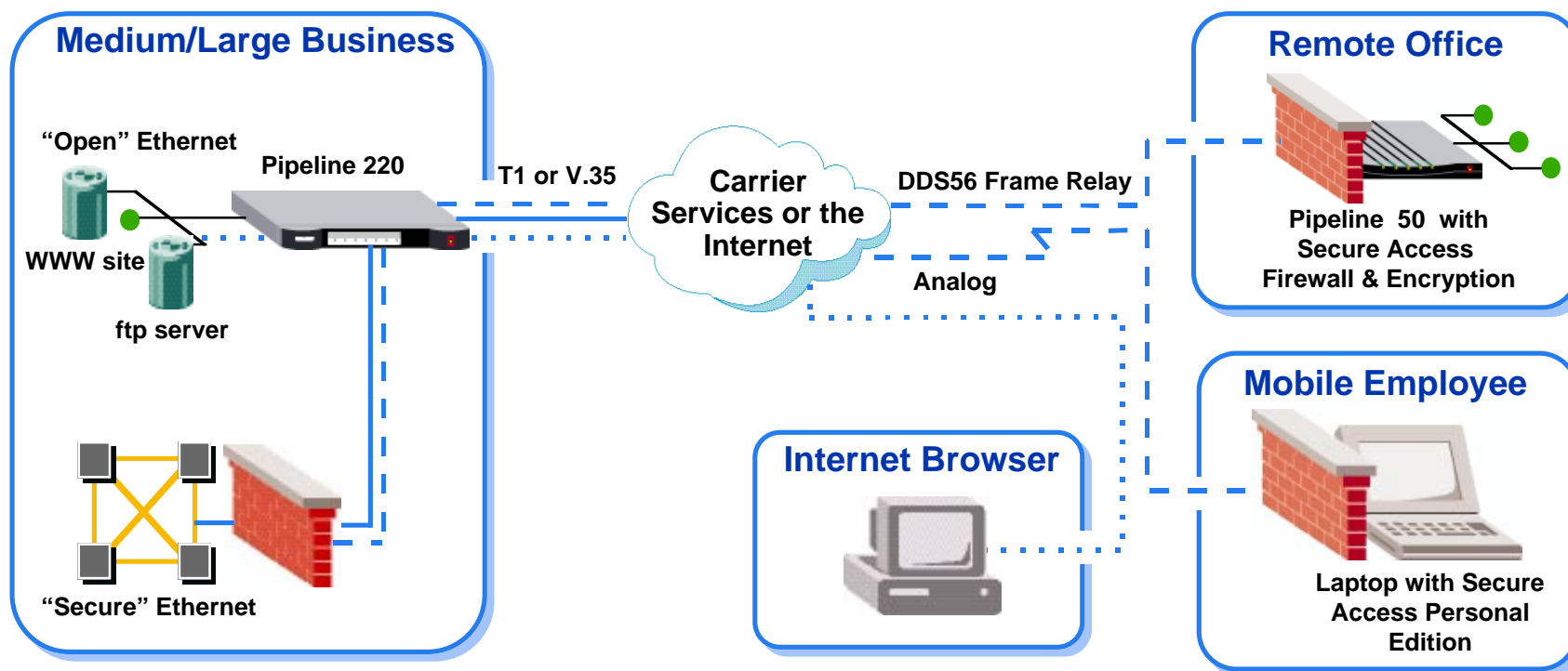


- Dual Ethernet support
- Optional Secure Access™ Firewall with IPSec encryption
- Concurrent multiprotocol routing
 - IP
 - IPX
 - AppleTalk
- Optional VPN tunneling
 - PPTP
 - ATMP
 - L2F
 - L2TP
- DRAM and FLASH upgradable



Pipeline 220

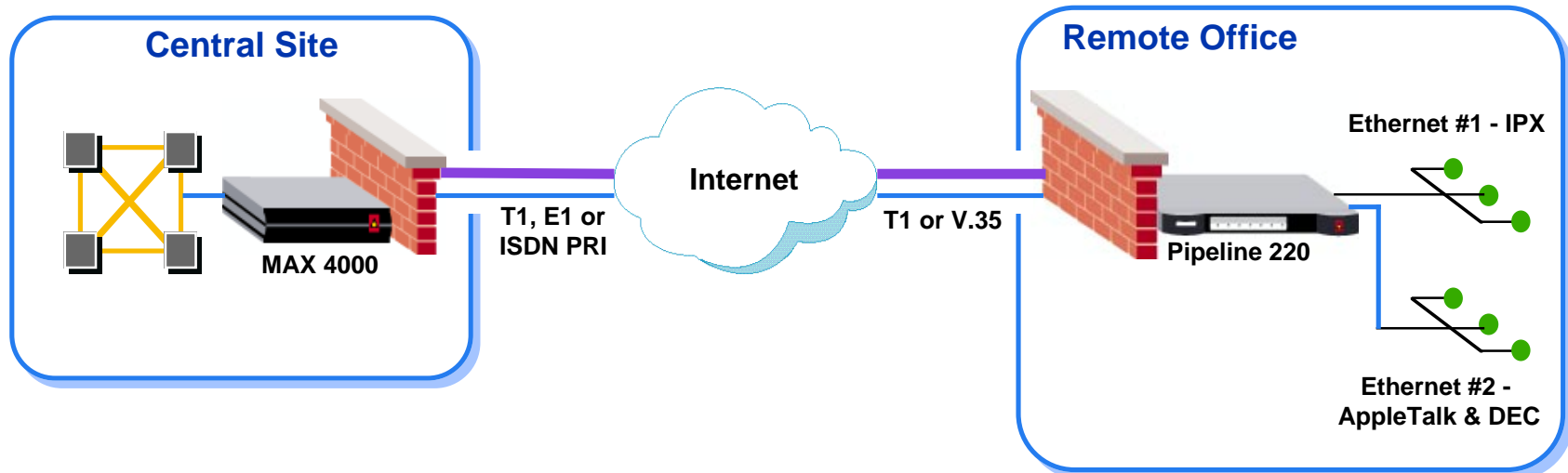
IPSec Encryption through the Internet





Pipeline 220 Applications

VPN tunneling through the Internet

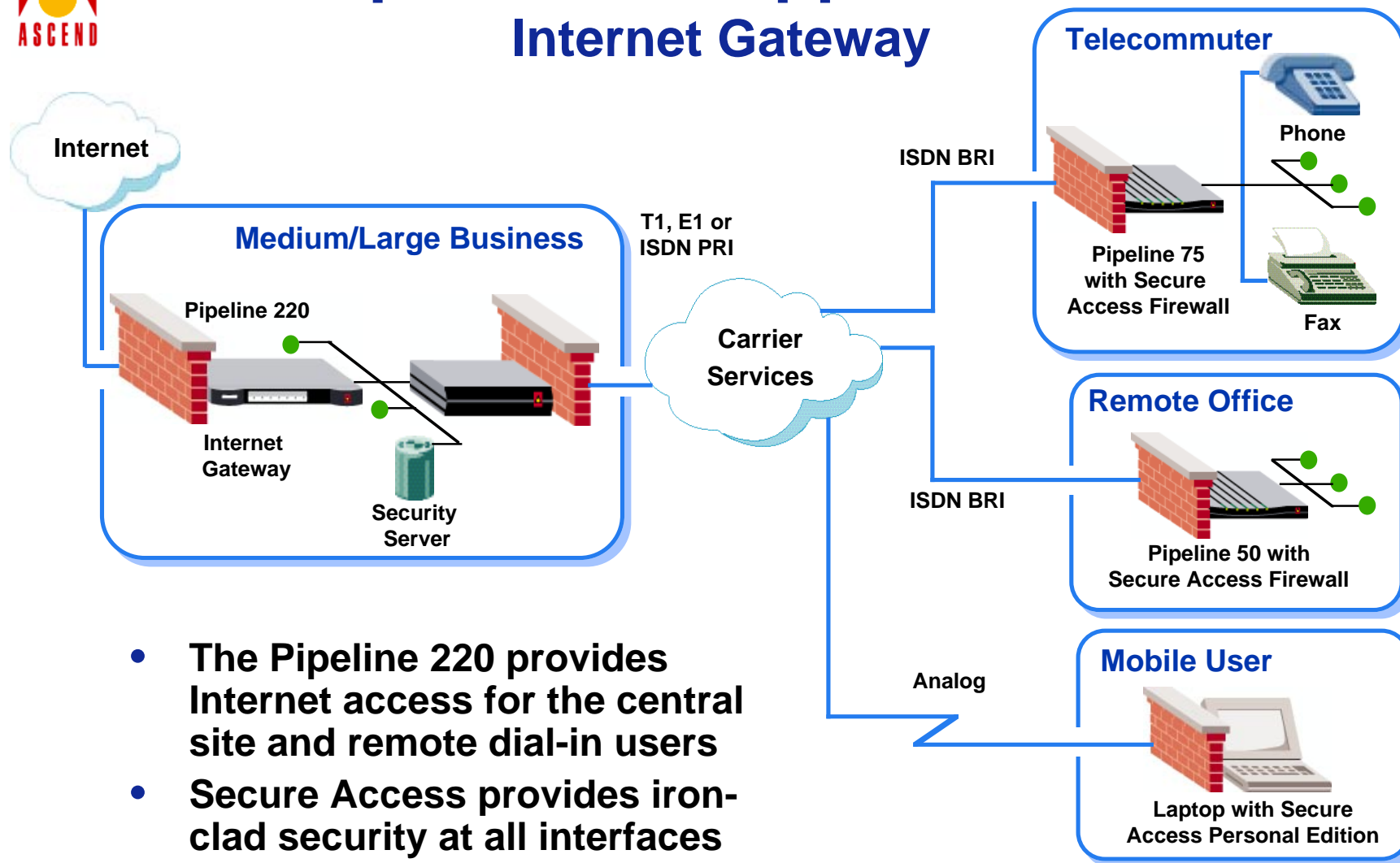


- **IPX, AppleTalk and other protocols are tunneled through the Internet with ATMP, PPTP, L2TP or L2F with the Pipeline 220**



Pipeline 220 Applications

Internet Gateway



- The Pipeline 220 provides Internet access for the central site and remote dial-in users
- Secure Access provides iron-clad security at all interfaces



Pipeline 220

Product Overview

- **Unchannelized T1/E1**
 - WAN protocols: PPP, Frame Relay
- **High-speed serial V.35 (RS-449)**
 - X.21 support
- **Dual 10Base-T Ethernet ports**
- **DRAM upgradable**
- **Flash memory upgradable**



Pipeline 220

Standard Features

- **Unchannelized T1/E1 or V.35 (RS-449) high-speed serial interfaces**
 - Software configurable
- **Dual Ethernet ports**
 - 10Base-T
- **Network Address Translation (NAT)**
- **Dynamic Host Configuration Protocol (DHCP) server spoofing**
- **Support for flash memory upgrades**
 - Via integrated PCMCIA slot
- **Flash EEPROM**
 - Makes software upgrades easy
- **Support for DRAM memory upgrades**
 - Via integrated single height 8-pin connector slot
- **Java-based configuration utility**
 - or VT100 LCD configuration
- **Multiprotocol routing**
 - TCP/IP
 - IPX
 - AppleTalk



Pipeline 220

Optional Features

- **SecureConnect™**
 - Includes integrated Secure™ Access Firewall with IPSec Encryption
- **VPN Tunneling**
 - ATMP, PPTP, L2TP, L2F
- **DRAM Memory**
 - 8, 16 and 32 MB upgrades
- **Flash Memory**
 - 8, 16 and 32 MB upgrades



Pipeline 220

Target Customers

The most flexible and secure router for:

- **Medium to large businesses**
- **Remote offices**
- **Internet Service Providers**



Pipeline 220

Competitive Analysis

Product	Ascend Pipeline 220	Cisco 2514	Compatible Systems 2240R
Base List Price	\$2,995	\$2,695	\$2,695
Software	Included	\$295	Included
CSU/DSU	Included	\$1,000	Included
Firewall	\$2,000	\$11,500*	No
Encryption	Incl. w. firewall	Incl. w. firewall	No
VPN Tunneling	\$1,500	Proprietary	No
Multiprotocol routing	Included	Included	Included
Total Configured Price	\$6,495	\$15,490	\$2,695
Routed Protocols			
IP	Yes	Yes	Yes
IPX	Yes	Yes	Yes
AppleTalk	Yes	Yes	Yes
Memory			
Flash	2 MB	4 MB	1 MB
DRAM	8 MB	4 MB	1 MB
LAN Connectivity			
Ethernet	10Base-T	AUI	10Base-T
Segments Supported	2	2	2
WAN Connectivity			
T1 Interface	Yes	Yes	Yes
V.35/RS-449	Yes	Yes	No
Frame Relay	Yes	Yes	Yes
PPP	Yes	Yes	Yes

*Cisco PIX system w. DES encryption



Pipeline 220

Pricing and Availability

<u>Model Number:</u>	<u>Description:</u>	<u>Price:*</u>
P22-T1-V35	Pipeline 220 T1 or V.35 router	\$2,995
P22-E1-V35	Pipeline 220 E1 or V.35 router	\$2,995

Software Options

P22-SO-ASA	Secure Access/IPSec s/w option	\$2,000
P22-SO-VPN	VPN tunneling s/w option	\$1,500

After-market Field Upgrades

P22-SWUP-ASA	Secure Access/IPSec upgrade	\$2,000
P22-SWUP-VPN	VPN tunneling upgrade	\$1,500

Ordering: Immediately - Shipping 30 Days ARO

*US Domestic List Price