

Ascend

DSL TNT

Ascend's MultiDSL™ is a family of DSL products that include both Central Office Equipment (COE) and Customer Premises Equipment (CPE) for a wide range of DSL technologies including IDSL, SDSL, RADSL-CAP and RADSL-DMT that utilize the existing pair of wires between the Central Office (CO) and the residences/businesses.

The DSL TNT™ is a fully integrated, true multiservice xDSL concentrator designed for a telephone company's Central Office (CO). DSL TNT consists of a 14" chassis with support for DC or AC power supplies, a main controller module and 16 slots for MultiDSL line cards (IDSL, SDSL, RADSL-CAP and RADSL-DMT) and for network interface cards such as DS-3, T1/PRI, E1/PRI, FrameLine™, 10Base-T, 100Base-T, FDDI and HSSI.

The DSL TNT basic chassis includes support for one power supply (AC/DC), one main controller card and support for RADSL-CAP/DMT line cards and network interface cards. The DSL TNT may be upgraded using softkey (hash code) to add support for IDSL and SDSL line cards. This helps service providers to get the RADSL service off the ground cost effectively and at the same time has the flexibility to offer other xDSL services as the market demands in the future.

The DSL TNT is modular and permits service providers to install various hot-plug-in MultiDSL line cards and offer different xDSL services concurrently using a single manageable platform. The redundant power supplies ensure continuous operation under unforeseen circumstances while sharing the load under normal conditions.

The DSL TNT offers the highest port density of IDSL, SDSL, RADSL-CAP and RADSL-DMT line cards. At the same time, the DSL TNT utilizes minimum power for these various MultiDSL line cards to meet the low power consumption requirement of the telephone companies' Central Office (CO).

The MultiDSL line cards and network interface cards of a MAX TNT can be used, without any modification, with a DSL TNT ensuring protection of investment made in Ascend's products.

Target customers for DSL TNT and Applications

- Regional Bell Operating Companies (RBOCs)
 - High-speed Internet access for residences and businesses
 - VPN for corporations – telecommuting and remote office connectivity
- Competitive Local Exchange Carriers (CLECs)/Competitive Access Providers (CAPs)
 - VPN for ISPs – resell xDSL ports to ISPs
 - VPN for corporations – telecommuting and remote office connectivity
- Internet Service Providers (ISPs)
 - Internet access for residents in high rise buildings and apartment complexes
- Value Added Resellers (VARs)
 - Campus applications – interconnecting buildings within a campus such as universities and major corporations



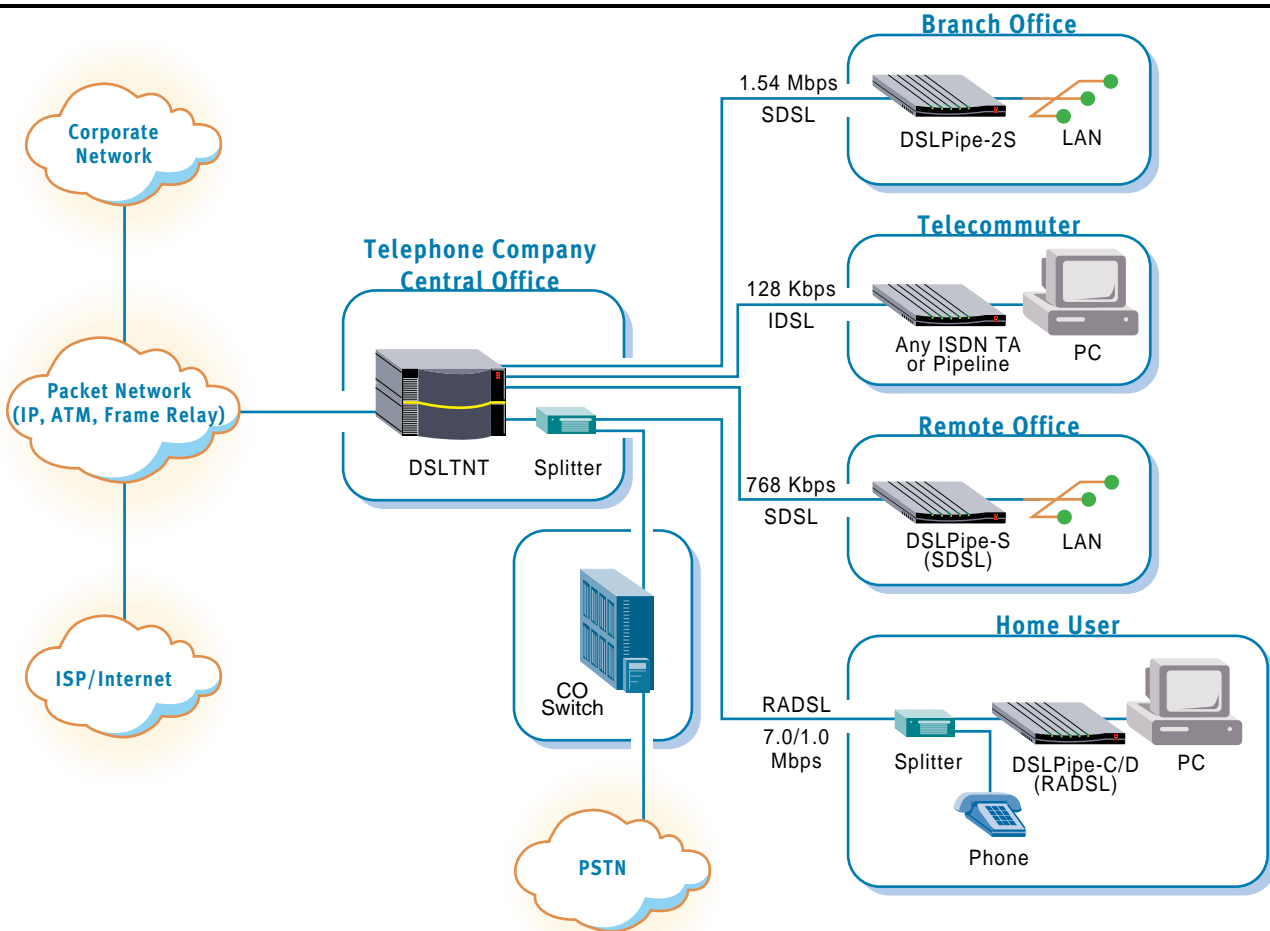


Figure 1 – The DSLTNT can support SDSL, IDSL and RADSL in a single platform.

Features

- 16-slot chassis; redundant power supply (AC/DC)
- Wide range of xDSL support on a single platform: IDSL, SDSL, RADSL-CAP and RADSL-DMT
- Supports other traditional data services
- Highest xDSL port density in the industry per 7-foot rack; up to 1344 IDSL ports; up to 1440 SDSL ports; up to 540 RADSL-CAP ports
- Wide range of egress to the network: DS-3, T1/PRI, E1/PRI, Serial WAN, HSSI, 10Base-T and 100Base-T
- Low power consumption per port
- Transport protocols: Point-to-Point Protocol (PPP), MP, MP+ or Frame Relay
- Wide range of speeds from 64 Kbps to 7.0 Mbps
- Manageable from a central network management system and SNMP support
- Fits seamlessly into the existing authentication infrastructure such as RADIUS, TACACS+, token cards

Market Positioning

Ascend's DSLTNT is part of Ascend's MultiDSL family of products and is a fully integrated, multiservice xDSL concentrator that supports a wide range of xDSL technologies on a single manageable platform with the highest port density.

Product Information

New feature requests: prod-mgmt@ascend.com

Collateral and product information: info@ascend.com

Product	Availability
DSLNT-AC:	Now
DSLNT-DC:	Now
SDSL Hash code:	Now
IDSL Hash code:	Now

Ordering Guidelines

Model	Product Description	US List
DSLNT-AC	DSLNT chassis, controller, support for RDSL and network interface cards and 1 AC power supply and Frame Relay	\$8,900
DSLNT-DC	DSLNT chassis, controller, support for RDSL and network interface cards and 1 DC power supply and Frame Relay	\$8,900
DSL-SO-SDSL	Hash code to add support for SDSL cards; Includes ISDN signalling	\$4,000
DSL-SO-IDSL	Hash code to add support for IDSL cards; Includes ISDN signalling	\$4,000

Worldwide and North American Headquarters

One Ascend Plaza
1701 Harbor Bay Parkway
Alameda, CA 94502, United States
Tel: 510.769.6001
Fax: 510.747.2300
North American E-mail:
info@ascend.com
International E-mail:
air-info@ascend.com
Toll Free: 800.621.9578
Fax Server: 415.688.4343
Web Site: <http://www.ascend.com>

European Headquarters

Rosemount House
Rosemount Avenue
West Byfleet
Surrey KT14 6NP, United Kingdom
Tel: +44 (0) 1932.350.115
Fax: +44 (0) 1932.350.199

Japan Headquarters

Level 19 Shinjuku Daiichi-Seimei Bldg.
2-7-1 Nishi-Shinjuku
Shinjuku-ku, Tokyo 163-07, Japan
Tel: +81.3.5325.7397
Fax: +81.3.5325.7399
Web Site: <http://www.ascend.co.jp>

Asia-Pacific Headquarters

Suite 1908, Bank of America Tower
12 Harcourt Road
Hong Kong
Tel: +852.2844.7600
Fax: +852.2810.0298

Latin, South America and the Caribbean Headquarters

One Ascend Plaza
1701 Harbor Bay Parkway
Alameda, CA 94502, United States
Tel: 510.769.6001
Fax: 510.747.2669

Ascend and the Ascend logo are registered trademarks and all Ascend product names are trademarks of Ascend Communications, Inc. Other brand and product names are trademarks of their respective holders.

