

**Ascend**

# MAX Product Line

## ■ MAX Product Line

- ◆ Chassis
- ◆ Slot cards
- ◆ Software

## ■ MAX Applications



**International**





# MAX Product Line

## ■ What is the MAX Product Line?

- ◆ MAX products share a common software base that is in use in 28 out of the largest 30 ISPs in the world
- ◆ Most MAX products have expansions slots -- these accept a variety of slot cards, which are available across the entire MAX line

## ■ What are the MAX products?

- ◆ A range of WAN access products ranging from low-end chassis for small offices to mid-range chassis for ISP POPs
- ◆ Products that are available as modular systems or fixed configuration solutions





# MAX Product Family

## ■ Modular Systems

- ◆ Low-end chassis
  - MAX 200Plus
- ◆ Mid-range chassis
  - MAX 1800
  - MAX 2000
  - MAX 4000 (International Only)
- ◆ High-end chassis
  - MAX TNT

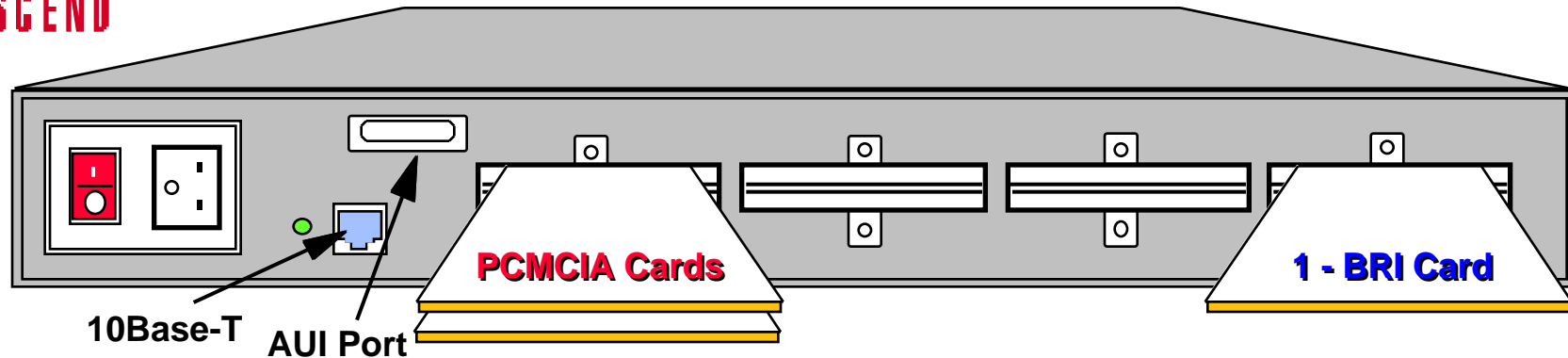
## ■ Fixed Configuration/Semi-Modular Systems

- ◆ MAX 2012/2024
- ◆ MAX 4048/4060,
- ◆ MAX 4030 (International Only)





# MAX 200Plus

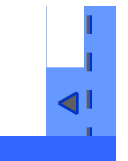


## ■ Chassis with 8 PCMCIA slots

- ◆ Up to 8 PCMCIA analog modems (various vendors)
- ◆ Up to 4 ISDN BRI PCMCIA cards (from Ascend)

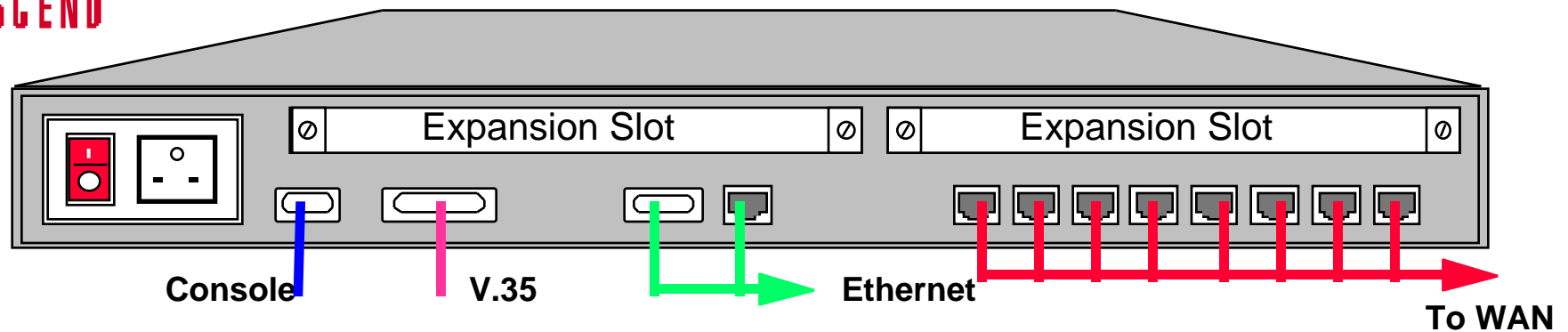
## ■ Designed for small to mid-sized businesses

- ◆ Telecommuting
- ◆ Internet access and remote access

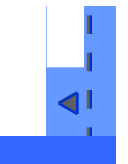




## MAX 1800

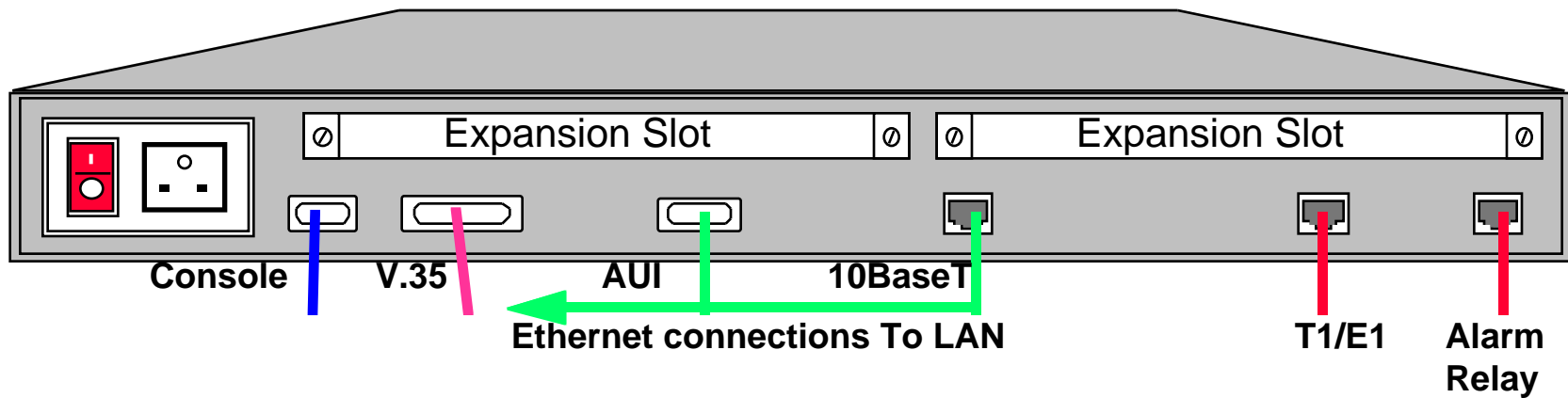


- 8 BRI port with 2 expansion slots
- Low cost unit for BRI concentration

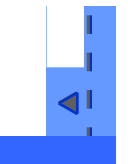




# MAX 2000

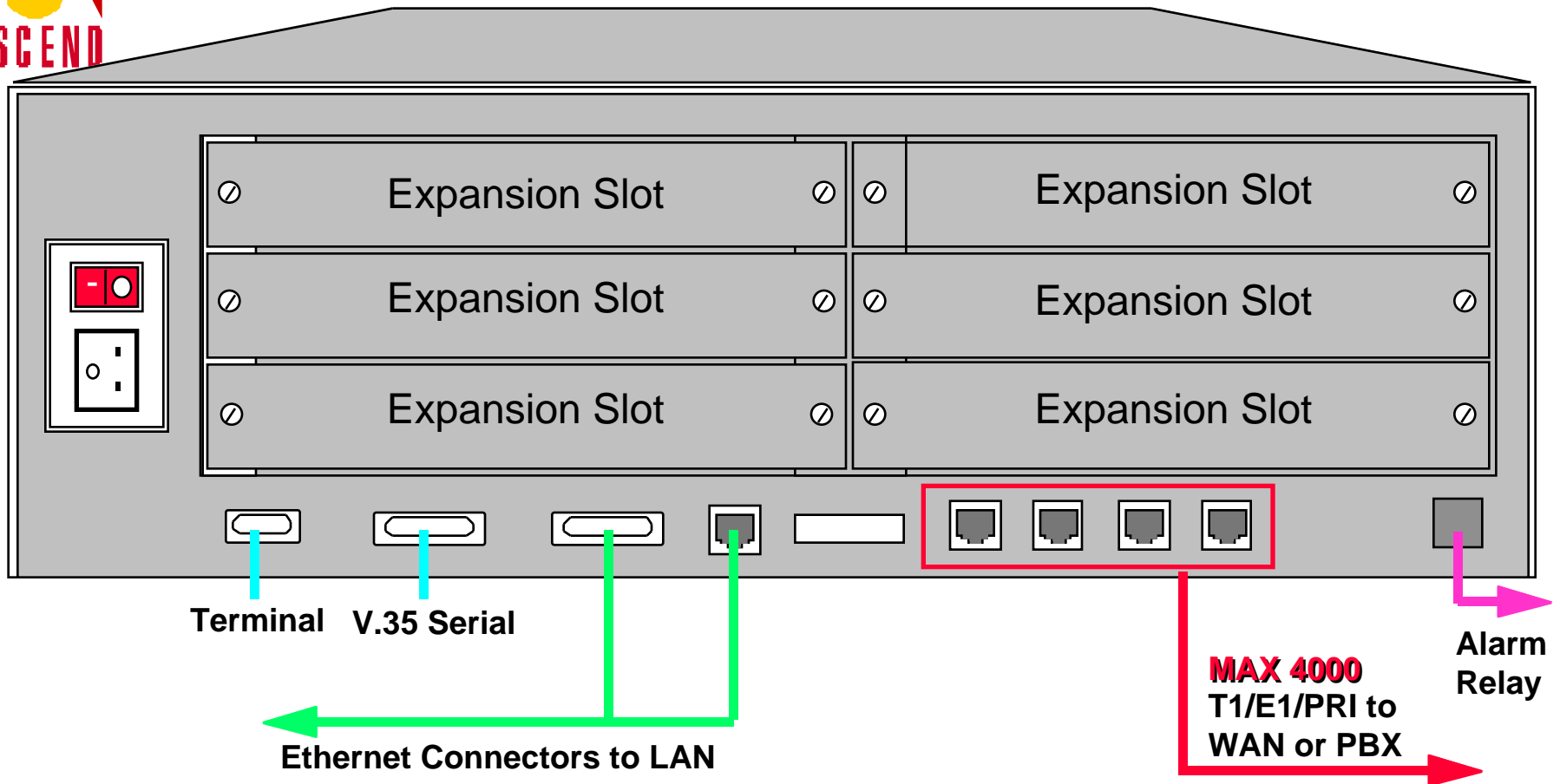


- 1 T1/E1 and 2 expansion slots
- V.35 or leased T1/E1





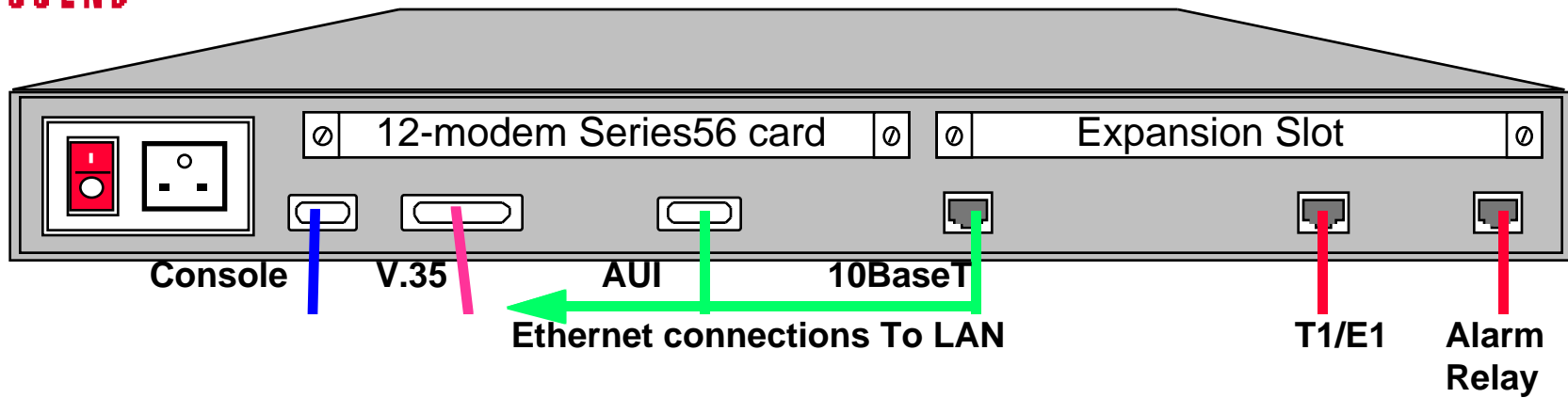
# MAX 4000



■ MAX 4000 -- 4 T1/E1s



# MAX 2012/24



## ■ Configurations

- ◆ MAX 2012, with available expansion slot for Series56, IMUX, BRI, or V.110 slot card
- ◆ MAX 2024 with 24 Series56 digital modems

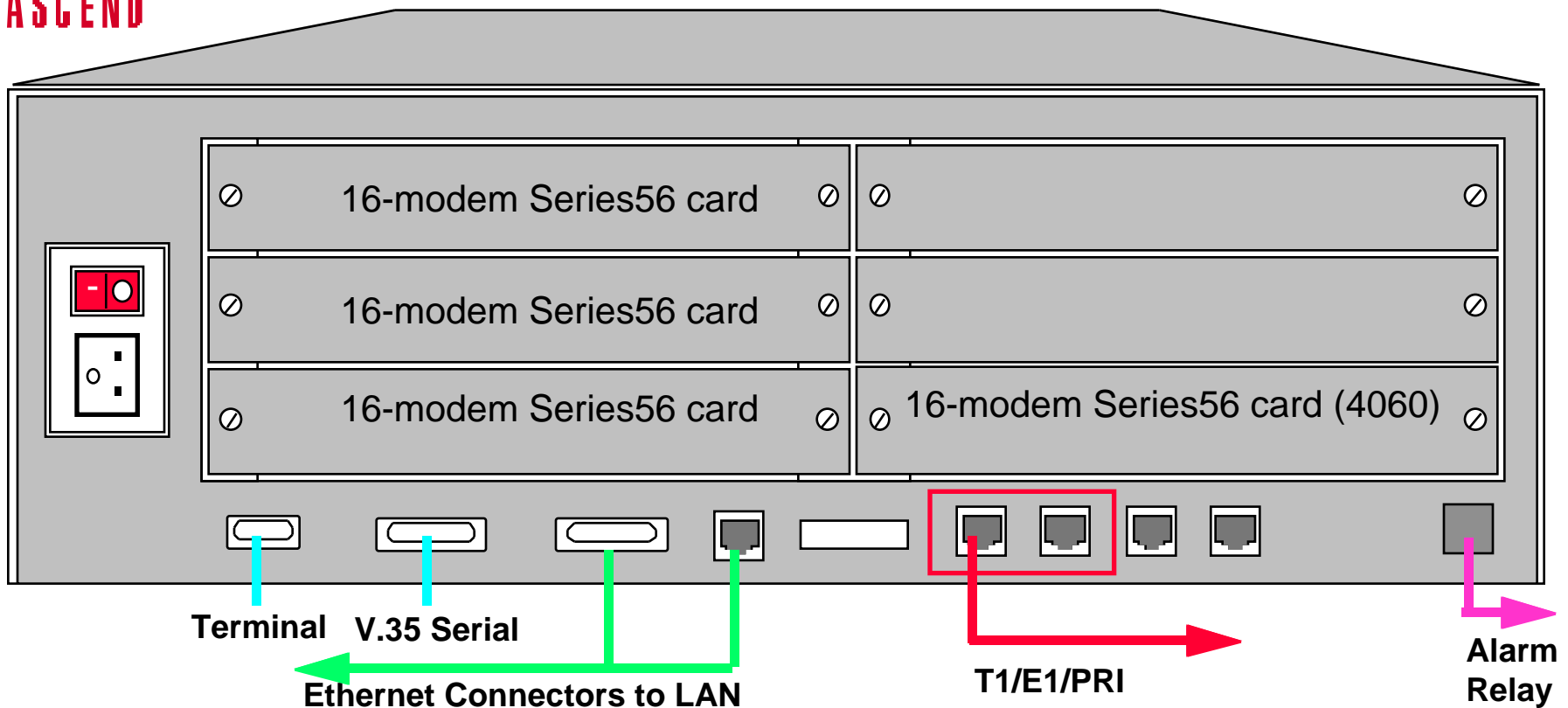
## ■ Includes bundled software (RNS, firewall) for corporations







# MAX 4048/4060 & 4030



- MAX 4030 - 2 E1s, 30 Series56 digital modems
- MAX 4048 -- 2 T1s, 48 Series56 digital modems
- MAX 4060 -- 2 E1s, 60 Series56 digital modems



# MAX Family Overview Chart

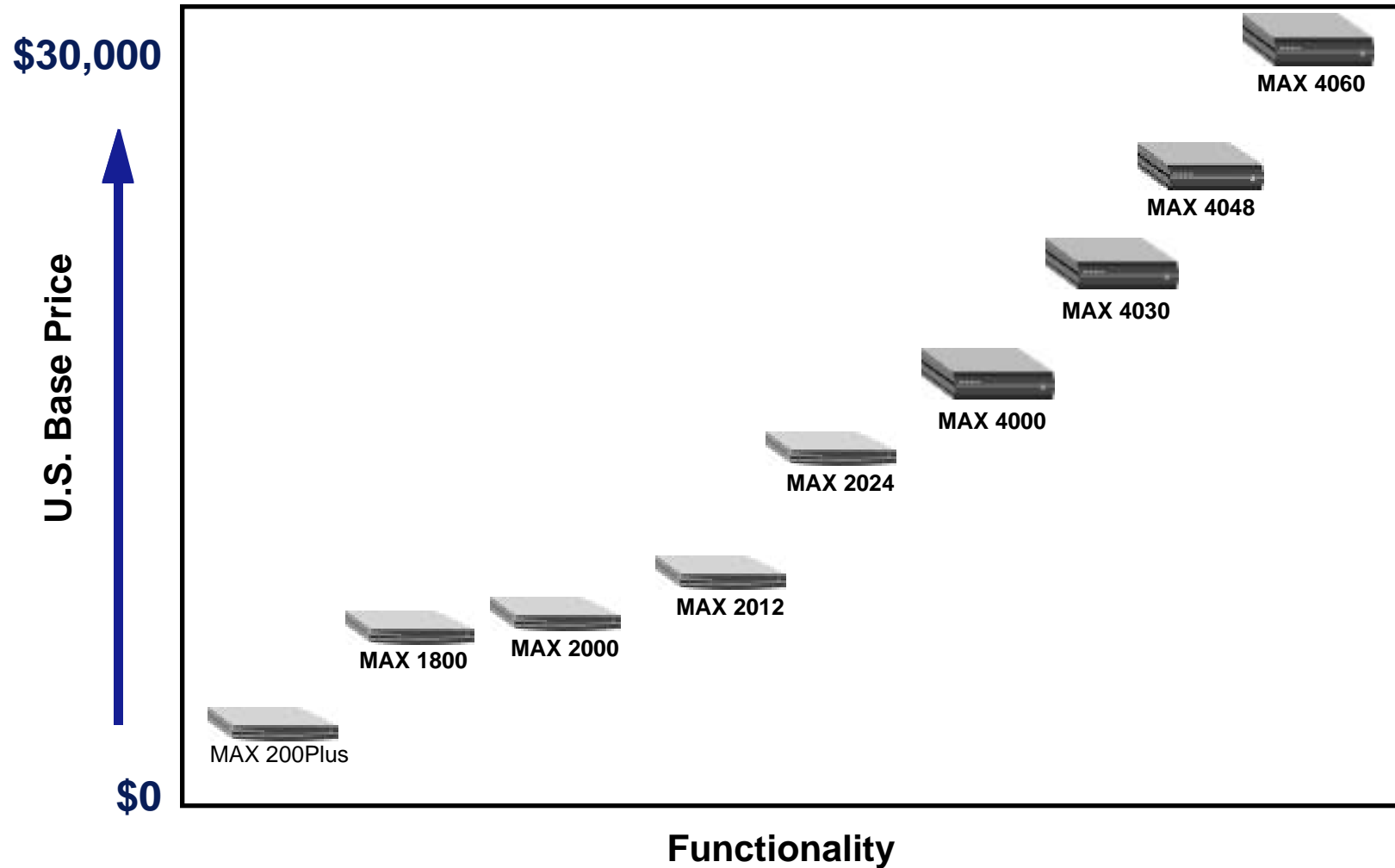
Product	MAX 200Plus	MAX 1800	MAX 2000	MAX 2012/24	MAX 4000	MAX 4002	MAX 4004	MAX 4030	MAX 4048	MAX 4060
E1	0	0	0	1	4	0	0	0	0	2
T1 with int'd CSUs	0	0	1	1	4	2	4	2	2	0
ISDN BRI (S/T)	up to 4	8	0	0	up to 40	up to 40	up to 40			
ISDN BRI (U)	up to 4	8	0	0	0	0	0			
ISDN PRI	No	No	1	1	4	2	4	2	2	2
Ethernet	1	1	1	1	1	1	1	1	1	1
High-Speed Serial	No	1	1	1	1	1	1	1	1	1
Hybrid Analog & Digital Access	No	Included	Included	Optional	Optional	Optional	Optional	Included	Included	Included
Frame Relay Software	0	Optional	Optional	Optional	Optional	Optional	Optional	Included	Included	Included
Digital Modem Capacity	8*	16	24	12/24	72	48**	72	96***	48	60
Concurrent Digital Sessions	8	16	24	12/24	96	48***	96	96***	48	60
Expansion Slots	8 or PCMCIA	2	2	2	6	6	6	6	6	6
IMUX Ports	0	2	2	2	6	6	6	6	6	6

North America Only

\* Supports analog PCMCIA modems    \*\* Up to 72 with upgrade options    \*\*\* Up to 96 with upgrade options

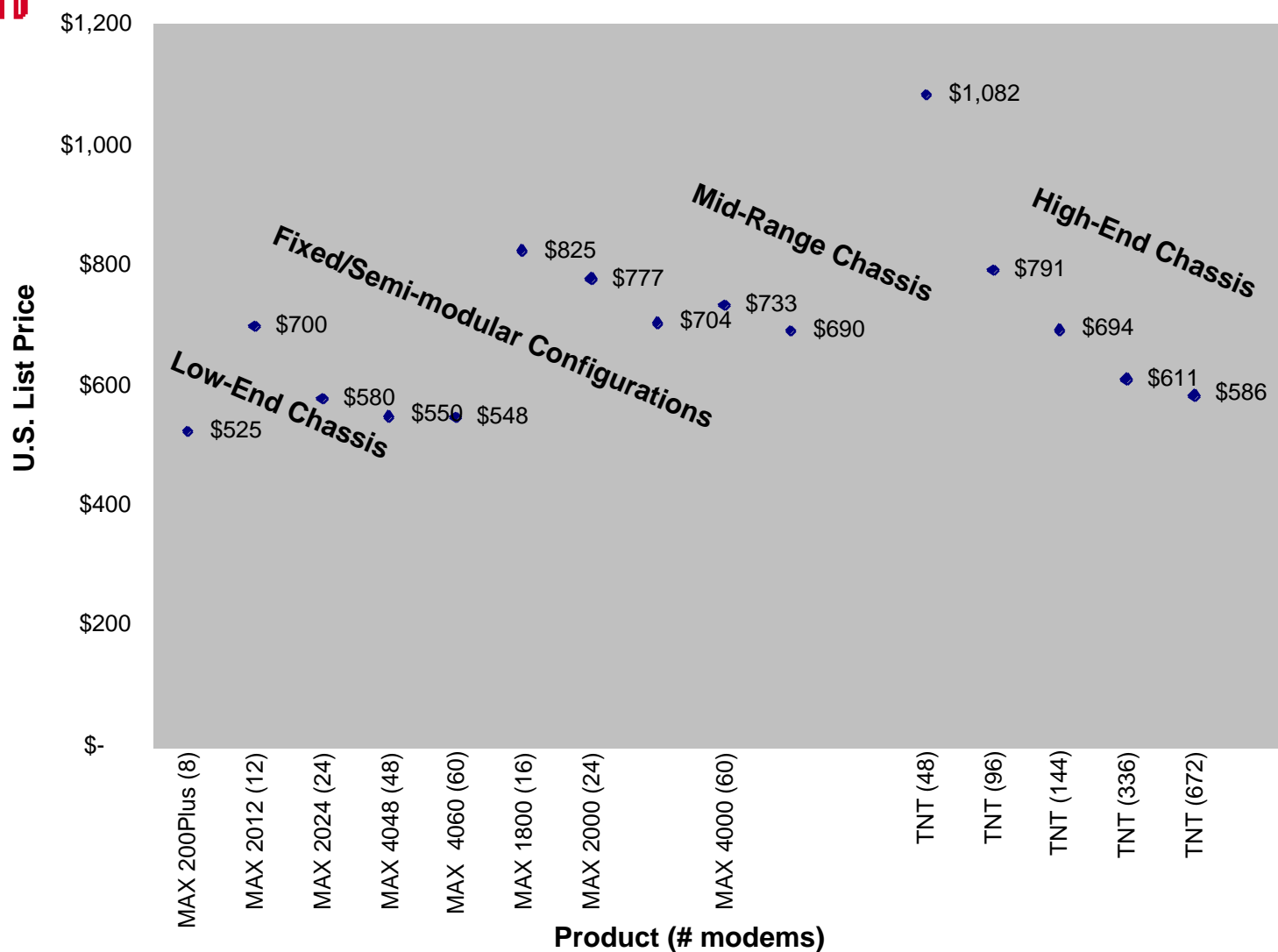


# MAX Family Pricing





# MAX and TNT Price/Modem





# MAX Slot Cards

## For MAX Expansion Slots

### ■ Series56 Digital Modems

- ◆ Available in 8-, 12- or 16-port densities

### ■ V.34 Digital Modems

- ◆ Available in 8- or 12-port densities

### ■ IDSL (MAX 400X only)

### ■ BRI (Network Services or Terminal)

### ■ IMUX

- ◆ 2-port IMUX cards for videoconferencing/backup & overflow
- ◆ 6-port IMUX cards for videoconferencing

### ■ HDLC (MAX 400X only)

### ■ V.110 (GSM)

### ■ Personal Handy-Phone System (Japan)





# MAX Product Line

## Protocol Support

### ■ Routed LAN protocols

- ◆ TCP/IP via RIP, RIP2, OSPF
- ◆ AppleTalk and IPX (with Remote Networking Software)

### ■ Bridged LAN Protocols

- ◆ All (with Remote Networking Software)

### ■ WAN Protocols

- ◆ PPP, SLIP, C-SLIP, Async PPP, Sync PPP, X.25 PAD, X.25 over B-channel, V.110, V.120, D4 framing (T1/E1), G703/732 framing (R1), Frame Relay PVC, PPP-FR gateway, Frame Relay NNI, ISDN signaling (with Hybrid Access X000), ARA (with Remote Networking Software)
- ◆ Modem support
- ◆ K56flex, X2 (via V.34), V.34, MNP 10-EC, MNP, V.42bis, fax modem dial out to 14.4 Kbps





# MAX Product Line

## Protocol Support (continued)

### ■ Bandwidth management

- ◆ Multilink PPP (MP), Multilink Protocol Plus (MP+), Bandwidth Allocation Control Protocol (BACP), TCP header compression, data compression (Ascend/Microsoft/STAC V9)
- ◆ Security
- ◆ RADIUS, Ascend Access Control (optional), Secure Access Firewall (optional), TACACS, TACACS+, Password Authentication Protocol (PAP), Challenge Authentication Protocol (CHAP), token card, Calling Line ID (CLID), packet filtering, SNMP, console management (VT-100), PPP callback, user authentication
- ◆ Virtual Private Networking (Optional)
- ◆ Ascend Tunneling Management Protocol (ATMP), Point-to-Point Tunneling Protocol (PPTP), Layer 2 Tunneling Protocol (L2TP), IPSec





# MAX Product Line

## Protocol Support (continued)

### ■ Remote Networking Software (Optional)

- ◆ Transparent Bridging
- ◆ Multiprotocol Routing: Adds routing support for IPX and AppleTalk
- ◆ Multiprotocol Access: Async IPX with local spoofing, AppleTalk Remote Access 1.0 & 2.0
- ◆ MAXDial
- ◆ MAXLink Pro

### ■ Management

- ◆ NetClarity, Java Configurator, Telnet, NASI, SNMP MIB-2, PPP LQM, Frame Relay Annex D, Frame Relay ITU Annex A, Frame Relay ANSI Annex D







# MAX Product Line

## Ultimate Access Functionality

- **Remote Networking Software**
- **Virtual Private Networking**
- **Security Options**
  - ◆ Secure Access Firewall
  - ◆ RADIUS and Ascend Access Control
- **Software Options**
  - ◆ Hybrid Access™ X000
  - ◆ MAX Stack
- **Extensive Management Capability**
  - ◆ NetClarity
  - ◆ Java Configurator





# Software Bundles

## Remote Networking Software

### ■ Remote Networking Software

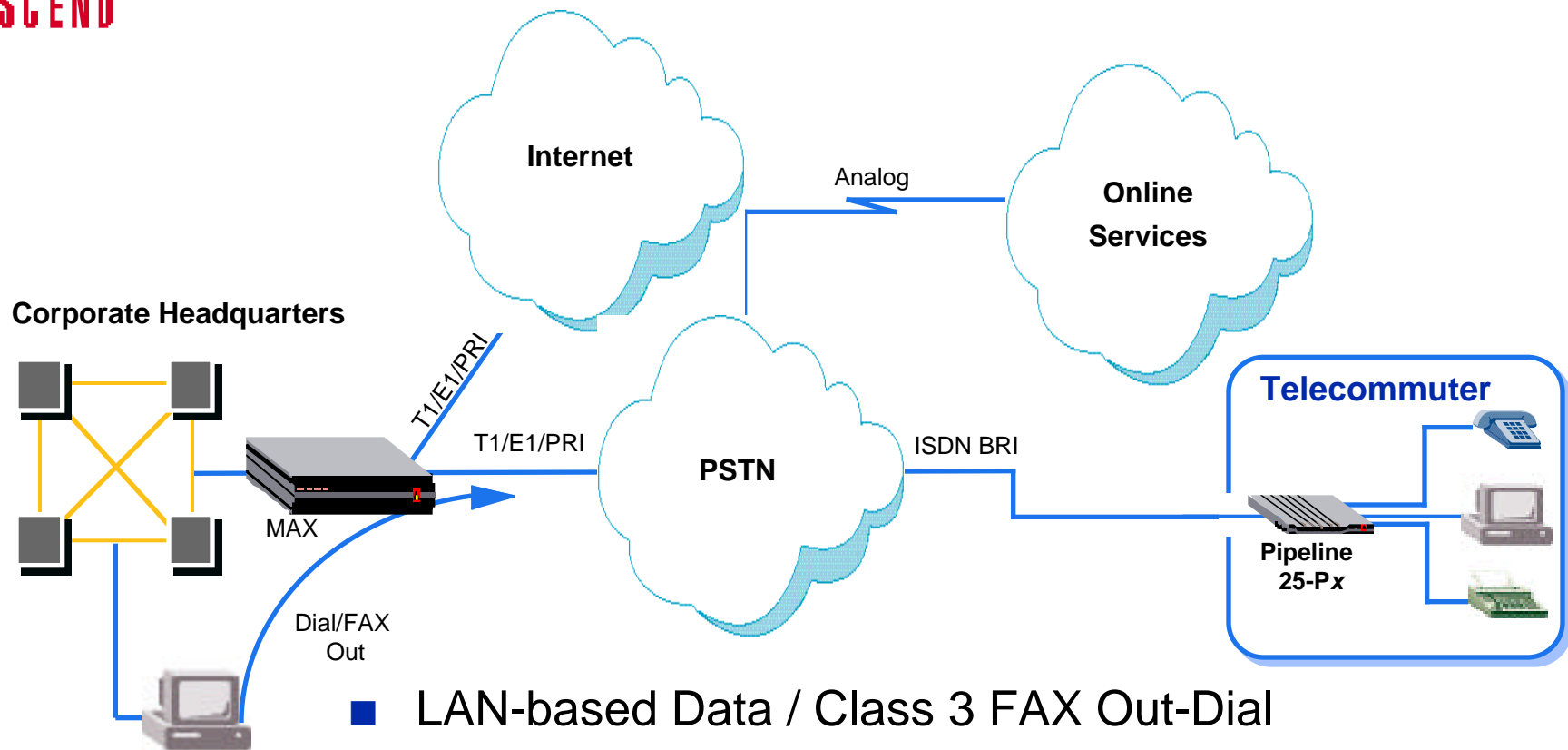
- ◆ Software solution for corporate multiprotocol environments
- ◆ Transparent Bridging
- ◆ Multiprotocol Routing
  - Adds IPX and AppleTalk routing
- ◆ Multiprotocol Access
  - Adds IPX and AppleTalk Remote Access
- ◆ Client Dial Software
  - MAXDial
  - MAXLink Pro





# MAX Product Line

## Remote Networking Software - MAXDial

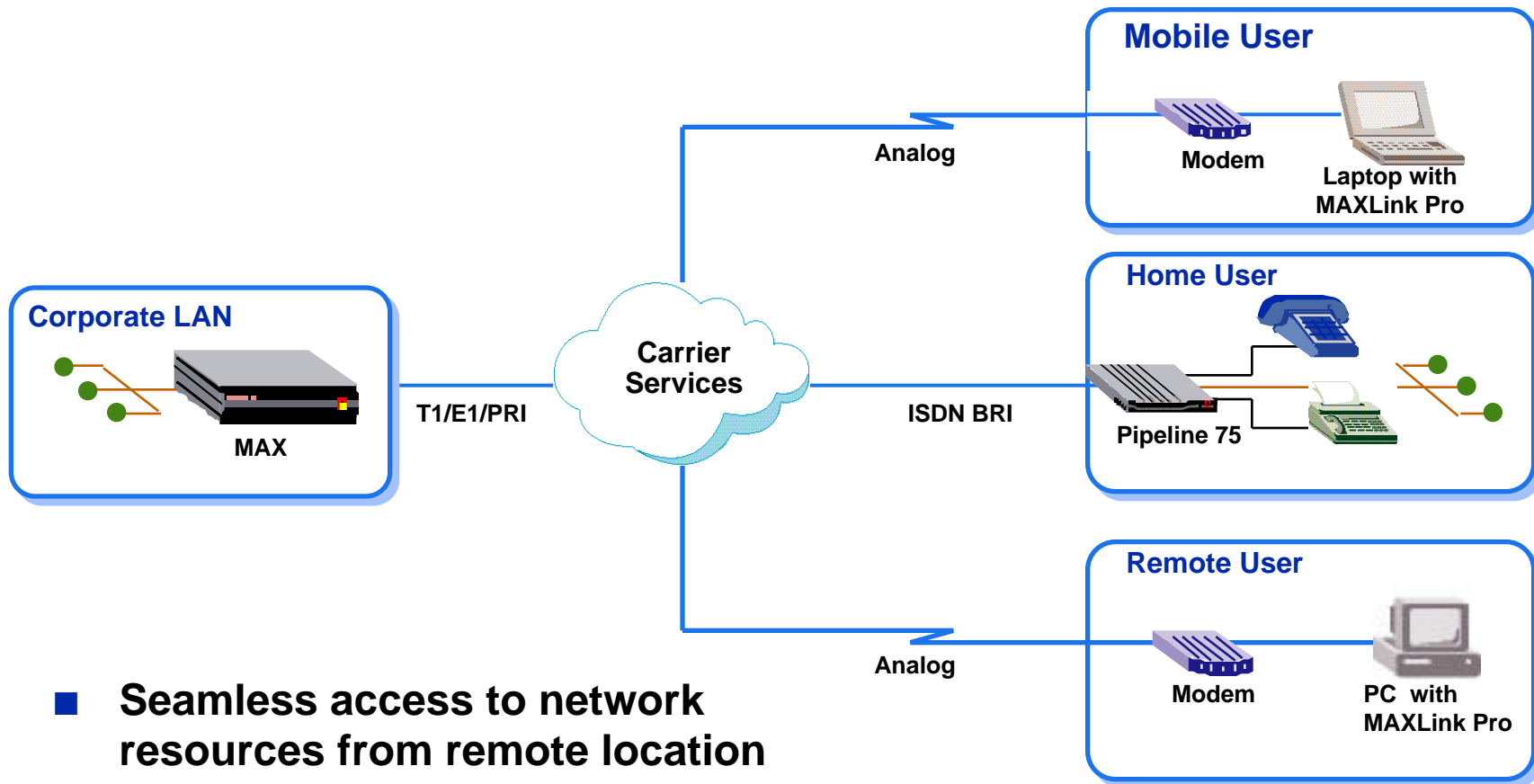


- LAN-based Data / Class 3 FAX Out-Dial
- Multiprotocol Support
- DOS, Win 3.X, Win95 Support
- Easy Installation and Maintenance
- Call Activity Audit Capability



# MAX Product Line

## Remote Networking Software - MAXLink Pro



- Seamless access to network resources from remote location
- Award-winning complement of software included



# MAX Product Line

## Virtual Private Networking

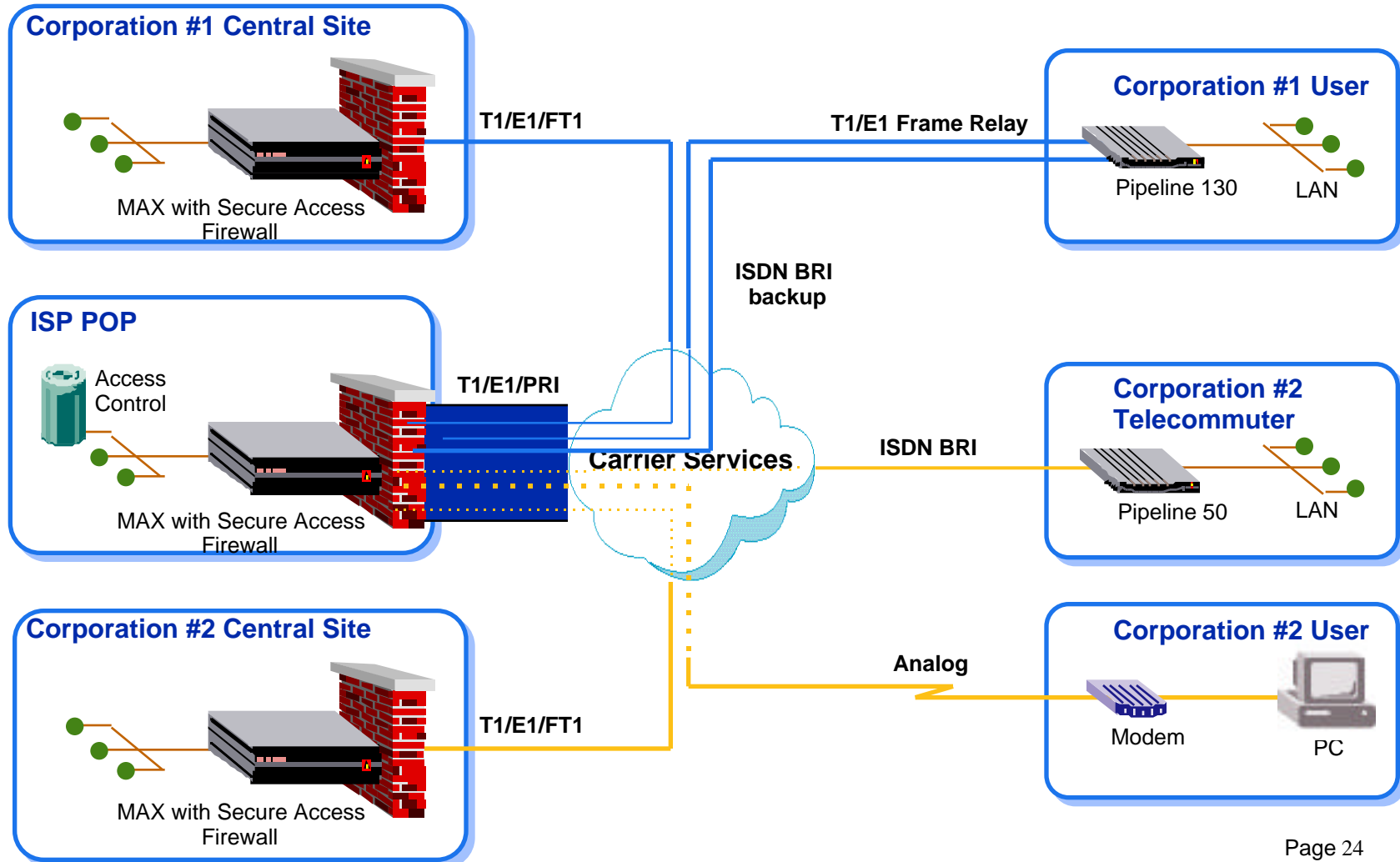
- **Ascend Tunneling Management Protocol (ATMP)**
  - ◆ GRE tunneling
  - ◆ Mobile-IP
  - ◆ IPX protocol spoofing
- **Frame Relay Direct**
- **Point-to-Point Tunneling Protocol (PPTP)**
- **Layer 2 Tunneling Protocol (L2TP)**
- **IPSec**
- **Raw TCP tunneling**
- **IP Direct**
- **Extended RADIUS authentication and profile management**
- **Futures: L2F**





# MAX Product Line

## Virtual Private Networking





# MAX Product Line

## Security

### ■ Secure Access Firewall

- ◆ Dynamic “stateful inspection” firewall
- ◆ Explicit permit and deny
- ◆ Rules adapt to type of traffic
  - Network address, host names, UDP, TCP, ICMP, source/destination ports, send/receive direction, TCP session state, time, application port number, etc.
  - Eliminates need for proxy application gateway
- ◆ Secure Access Manager (configuration utility)
- ◆ Comprehensive audit trails for tracking

### ■ RADIUS

### ■ Access Control (extended RADIUS)

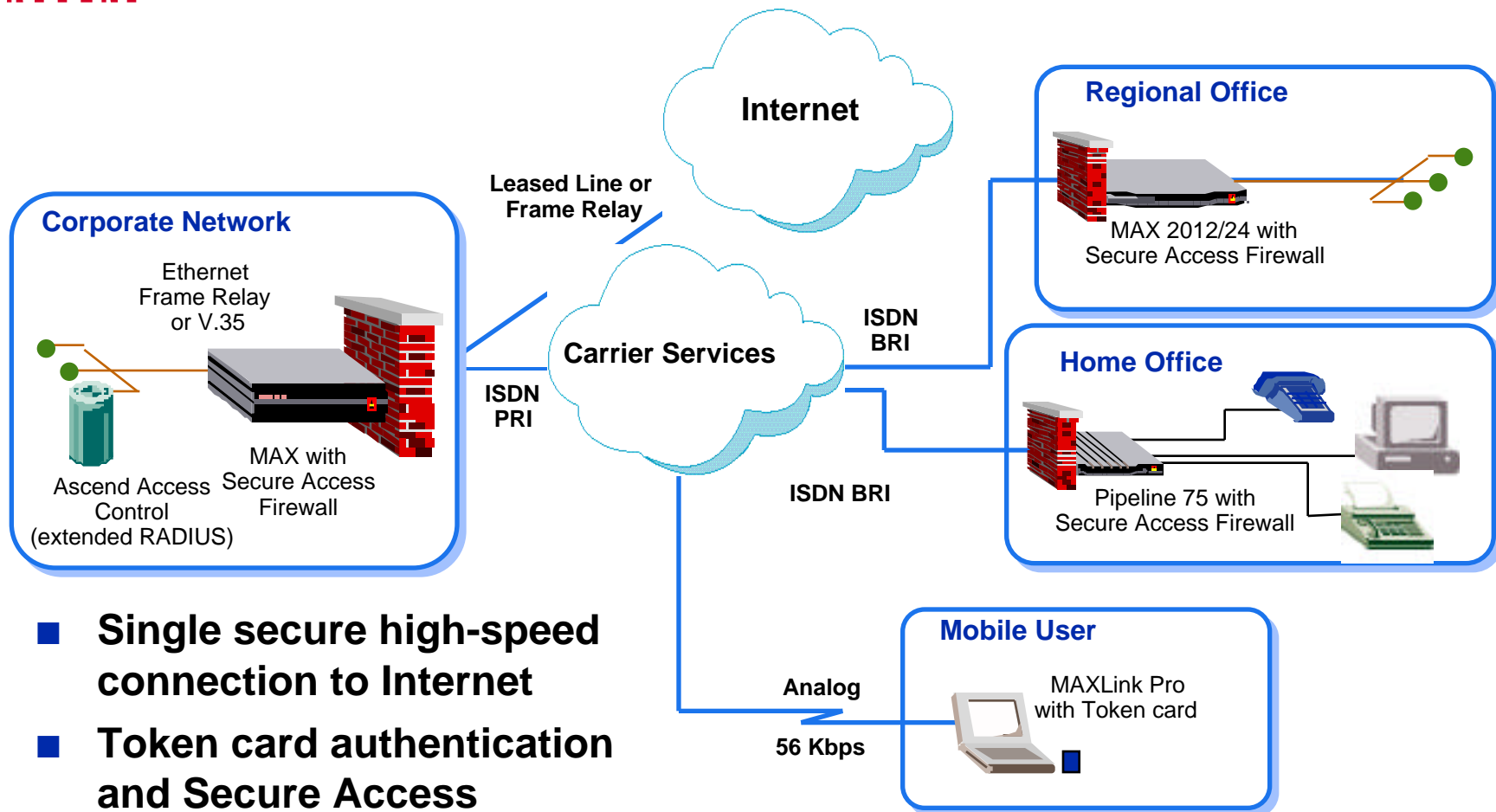
- ◆ Over 120 RADIUS extensions





# MAX Product Line

## Security Options - Corporate Internet Gateway



- **Single secure high-speed connection to Internet**
- **Token card authentication and Secure Access Firewall and Extended RADIUS Capabilities**





# Software Bundles

## Hybrid Access X000

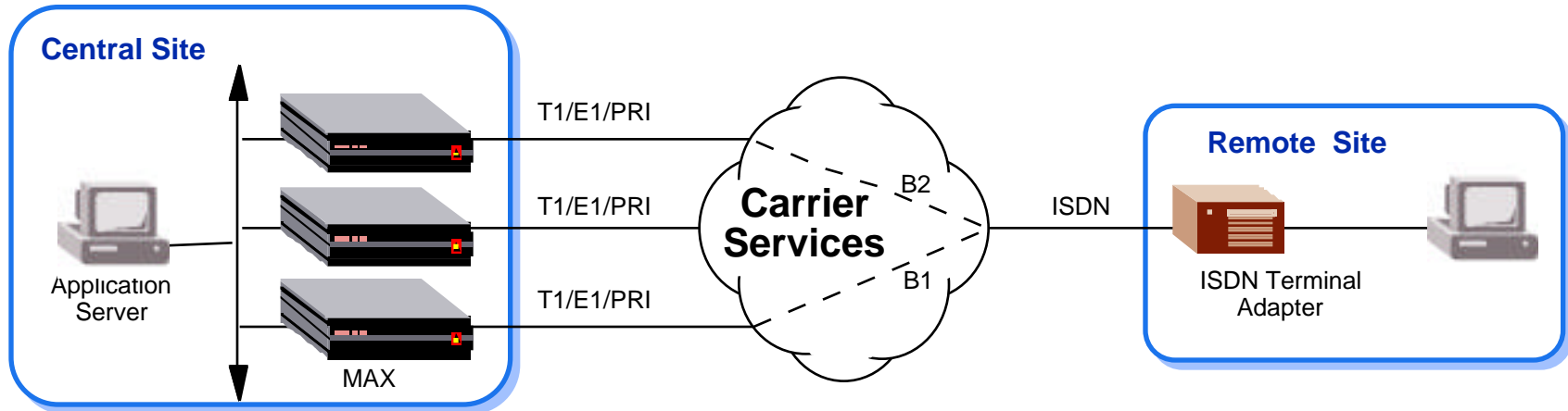
- **Software solution allows variety of access connectivity**
- **Digital Access**
  - ◆ 64 Kbps B-channels for ISDN
  - ◆ 64 Kbps Frame Relay
  - ◆ Up to 96 remote sessions
- **ISDN PRI signaling**
  - ◆ Enables PRI signaling for T1/E1 ports
- **Frame Relay support**
  - ◆ Up to 4096 PVCs with RADIUS authentication
  - ◆ Frame Relay Forum NNI and UNI
  - ◆ Line rates of 8Mbps over V.35 interface





# MAX Product Line

## MAX Stack



- **Multiple MAX system operating as single logical unit**
- **Shared-resource operation**
  - ◆ Shared IP pools
  - ◆ MP, MP+ and BACP calls span stack
  - ◆ Single virtual Network Access Switch
  - ◆ Scalable architecture using software





# Ascend Management

## Extensive Management Capabilities

### ■ Java Configurator

- ◆ Installation and configuration utility

### ■ NavisAccess (formerly NetClarity)

- ◆ Discovery and Mapping
- ◆ Element Management
- ◆ Summary View
- ◆ Configuration Management
- ◆ Fault Management
- ◆ Performance Management
- ◆ Capacity Planning
- ◆ Security and Accounting

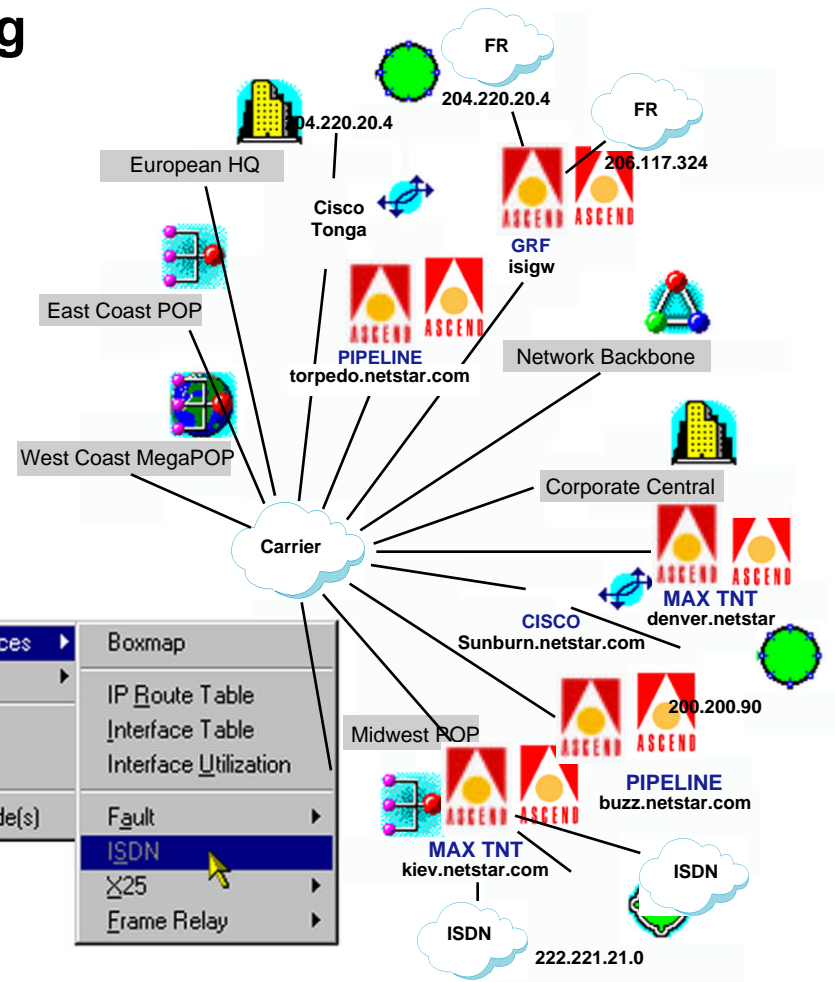
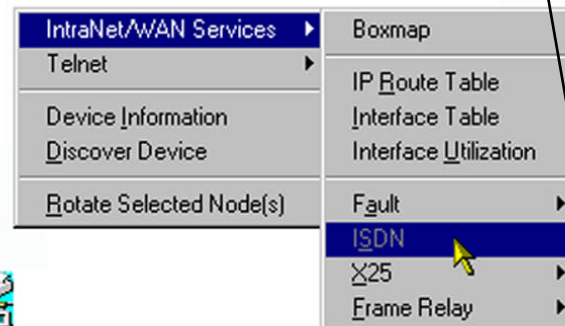
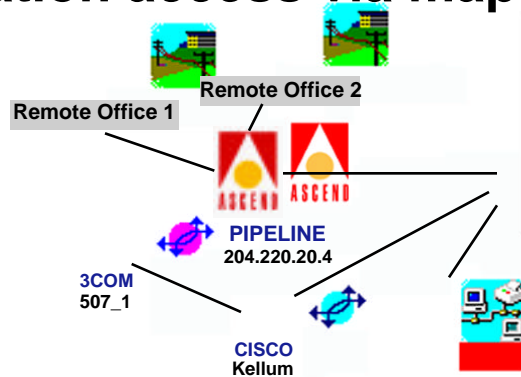




# NavisAccess

## Discovery and Mapping

- Utilizes HPOV discovery and mapping
- Augments HPOV with multi-layer hierarchical map
  - ◆ Network Layer: IP
  - ◆ Link Layer: Frame Relay, ISDN
  - ◆ Physical Layer: DS1, E1, PRI, BRI, xDSL
- Application access via map





# MAX Product Line

## Target Applications

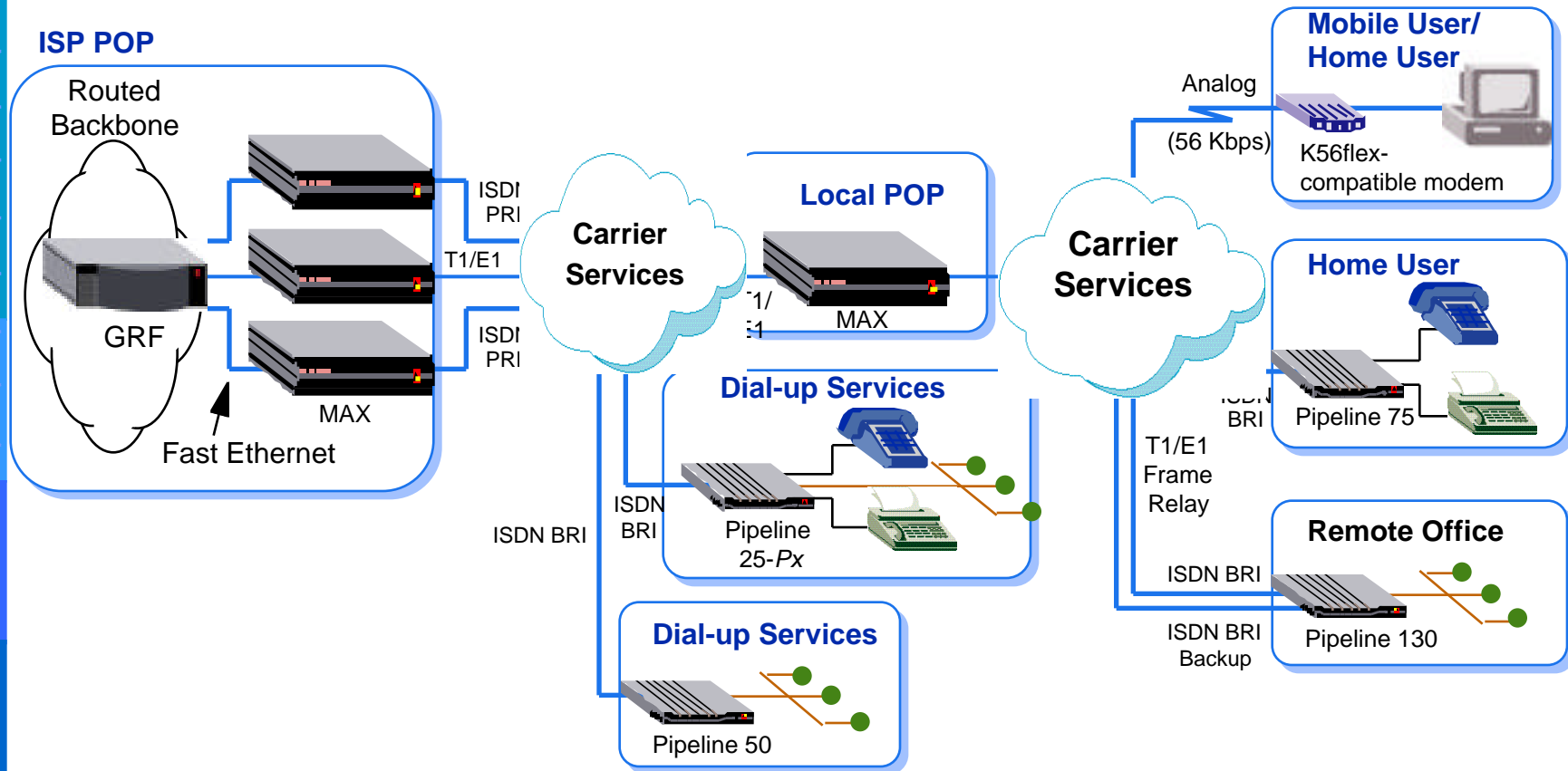
- **Fully-featured WAN Access Switches for:**
  - ◆ Carrier and Internet Service Provider POPs
  - ◆ Corporate remote and Internet access
- **Ideal Platform for ISPs and Carriers**
  - ◆ Low entry price with high-end feature set
  - ◆ Easy set-up using Java Configurator
  - ◆ Extensive network design flexibility as network grows
  - ◆ Extensive POP management with multi-vendor support
- **Well-suited for Corporate and Business Applications**
  - ◆ Multiprotocol access and multiprotocol routing support
  - ◆ Extensive access functionality / flexibility
  - ◆ Network management with performance analysis tools





# MAX Application

## ISP POP Concentration

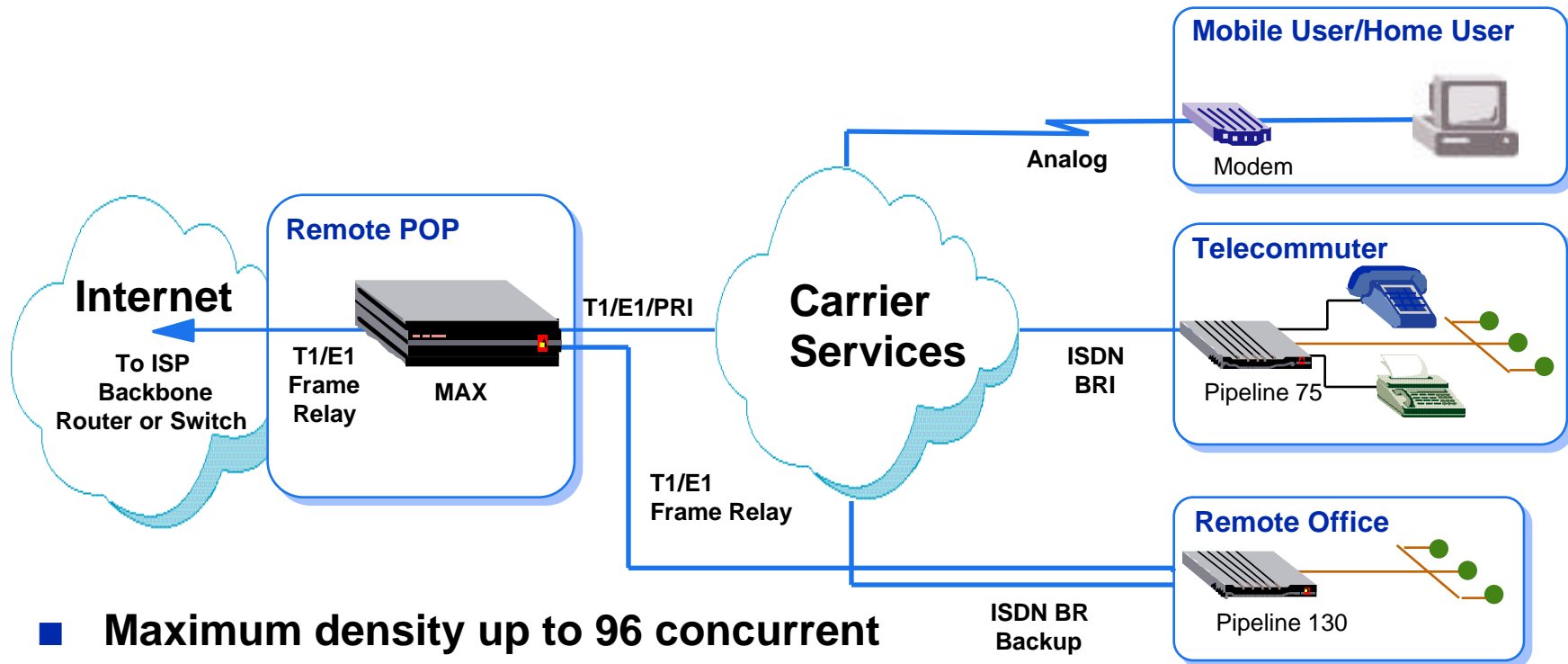


- Provide dialed and leased services
- Concentration of local POPs
- High-density session terminations
- Redundant networking



# MAX Application

## ISP Remote POP

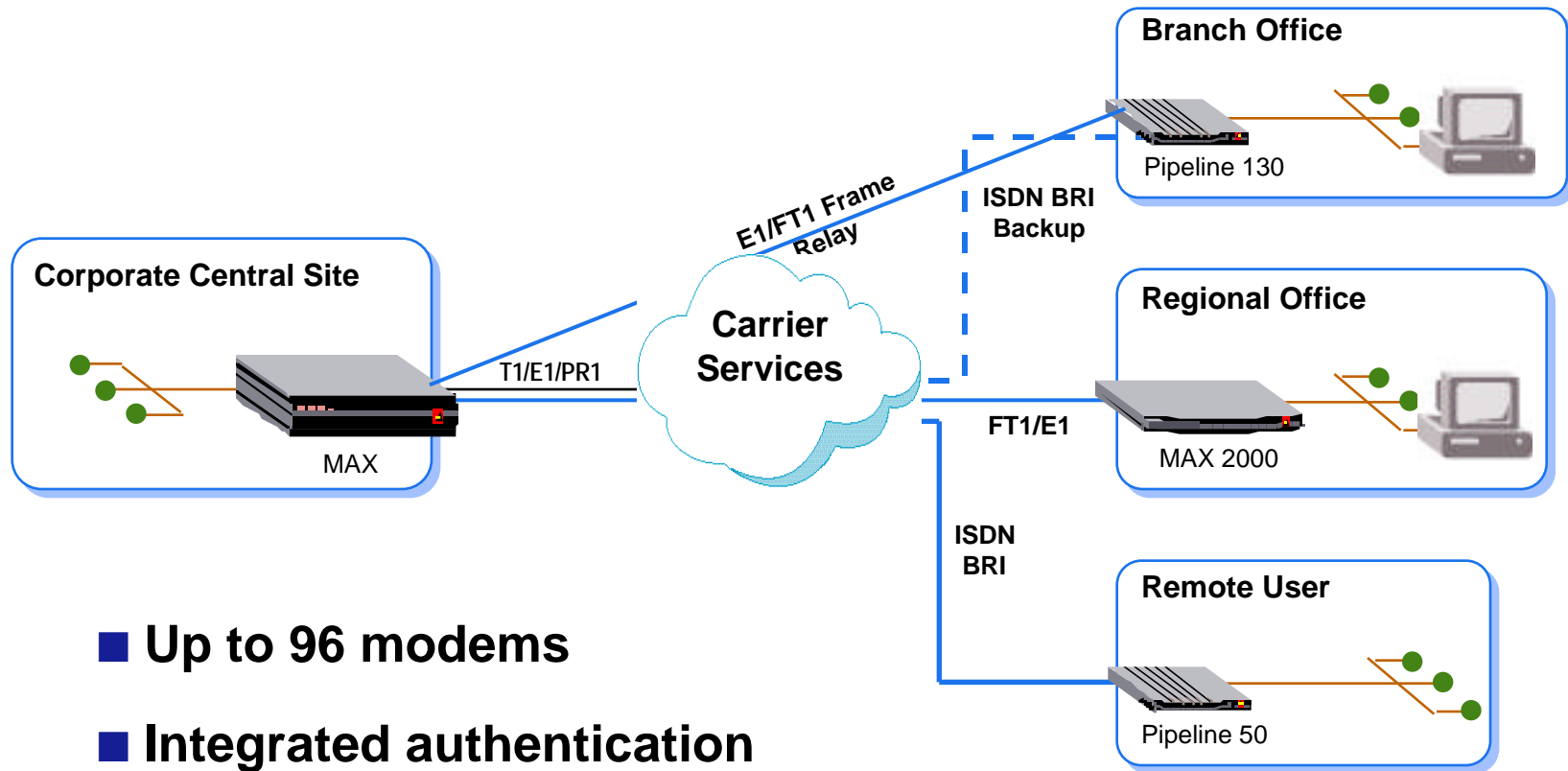


- Maximum density up to 96 concurrent sessions
- Provide dialed and leased services
- Analog and digital sessions
- K56flex / V.34 modems, ISDN and Frame Relay



# MAX Application

## Corporate Remote Access



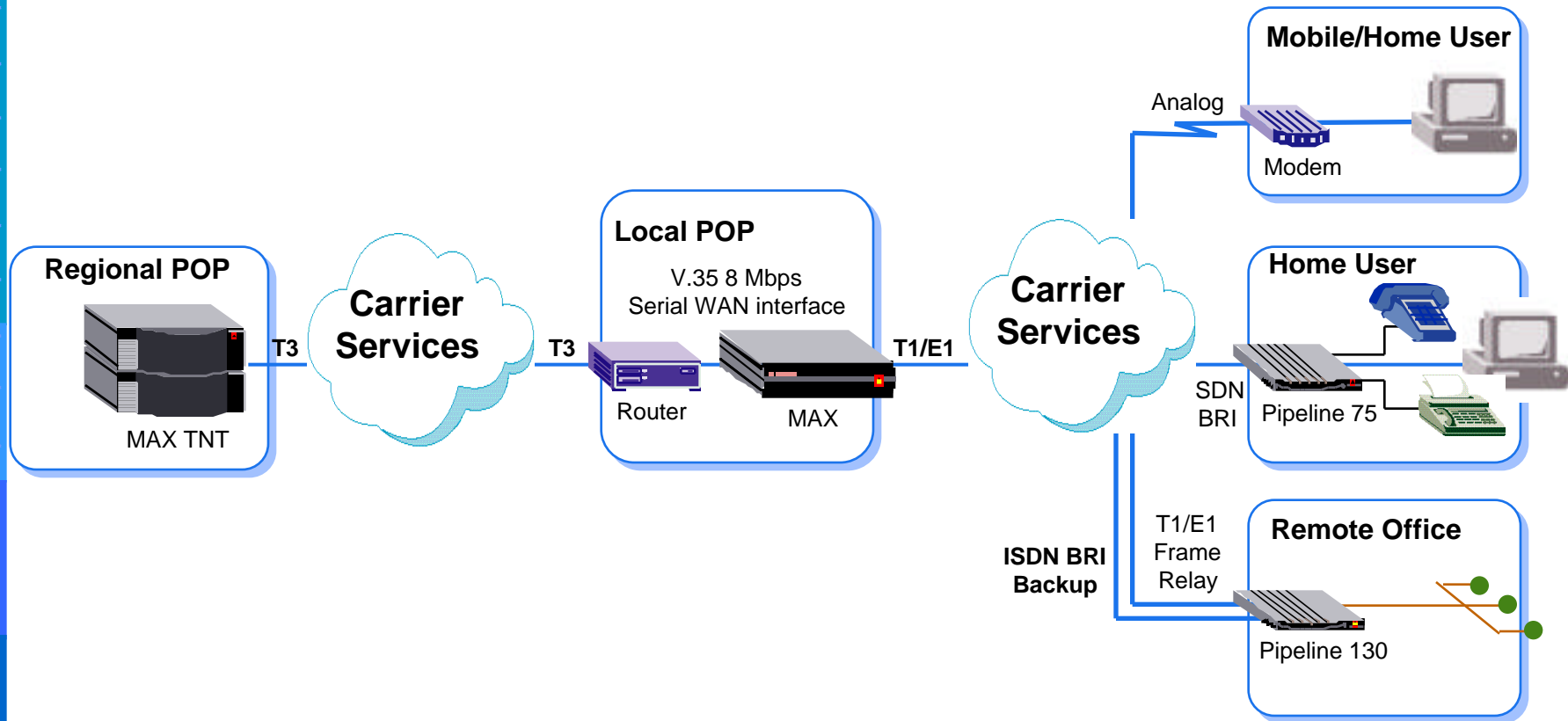
- Up to 96 modems
- Integrated authentication





# MAX Application

## Frame Relay Backhaul via V.35 Interface

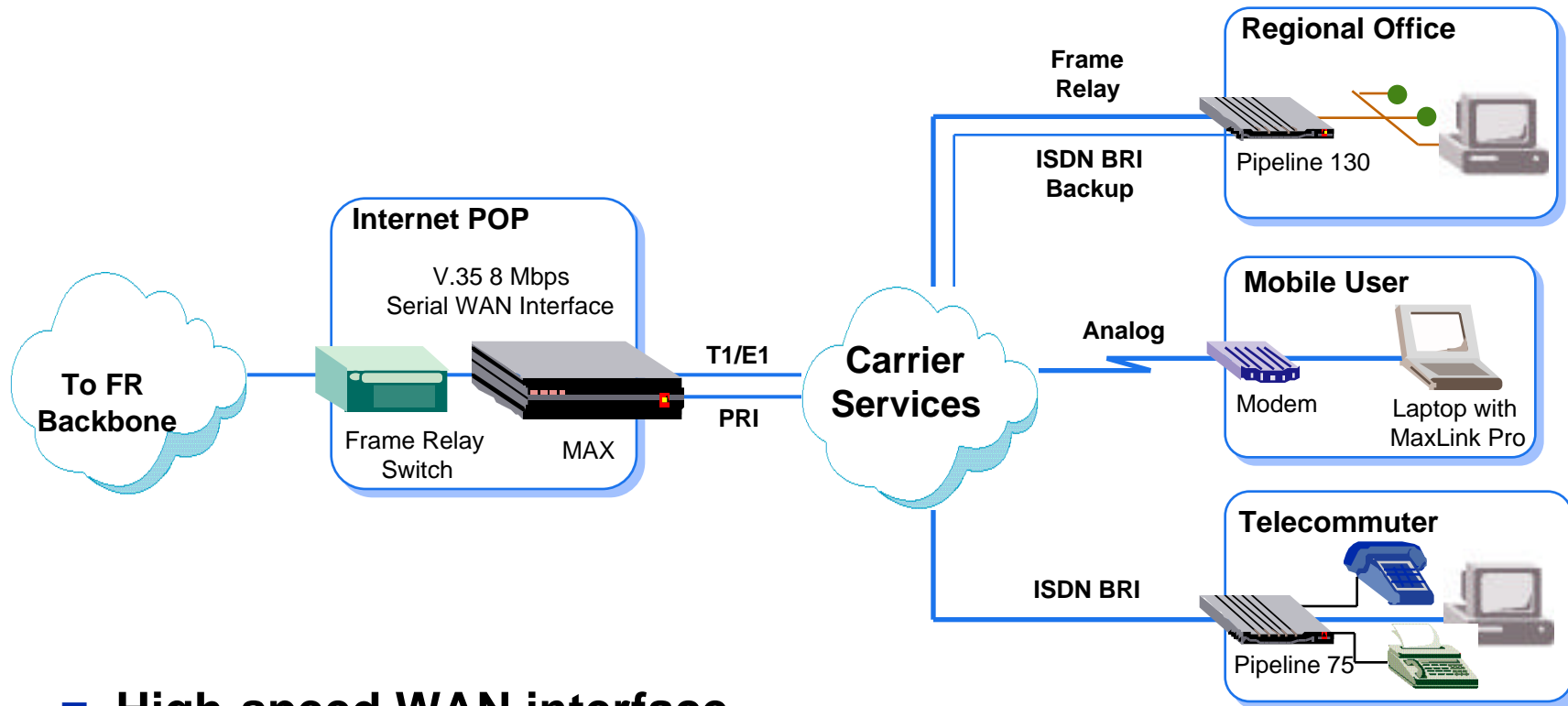


- 8 Mbps Serial WAN Interface



# MAX Application

## Frame Relay Switching

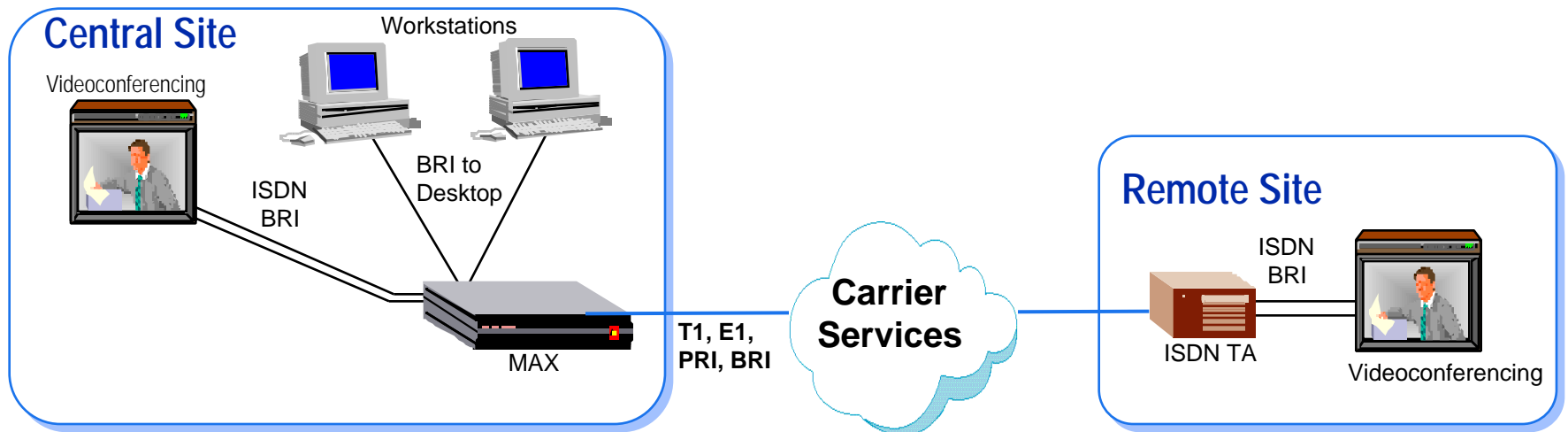


- High-speed WAN interface
- UNI and NNI standard



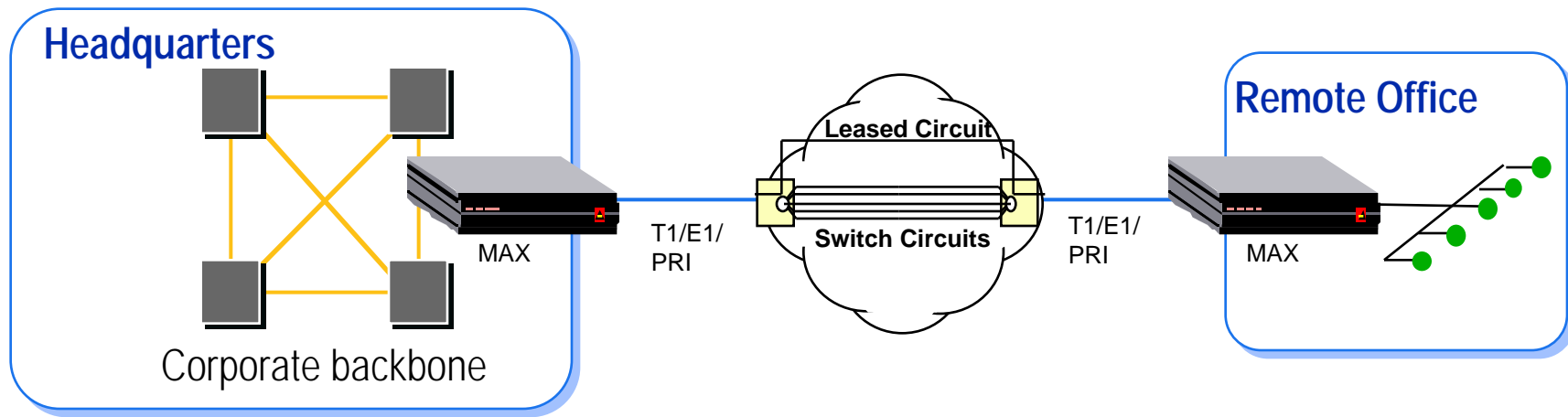
# MAX Application

## Videoconferencing





# MAX Application Backup and Overflow





<http://www.ascend.com>

