

Ascend



Ascend Intragay

David Saunders

15-16-PR





Enterprise Challenge

- **Desktop client users think “access the LAN” when connecting remotely**
- **Network services using non-IP protocols are still common in enterprise environments**
- **IS groups need a single desktop solution to reduce deployment and support overhead**



The Enterprise Needs IntragTM

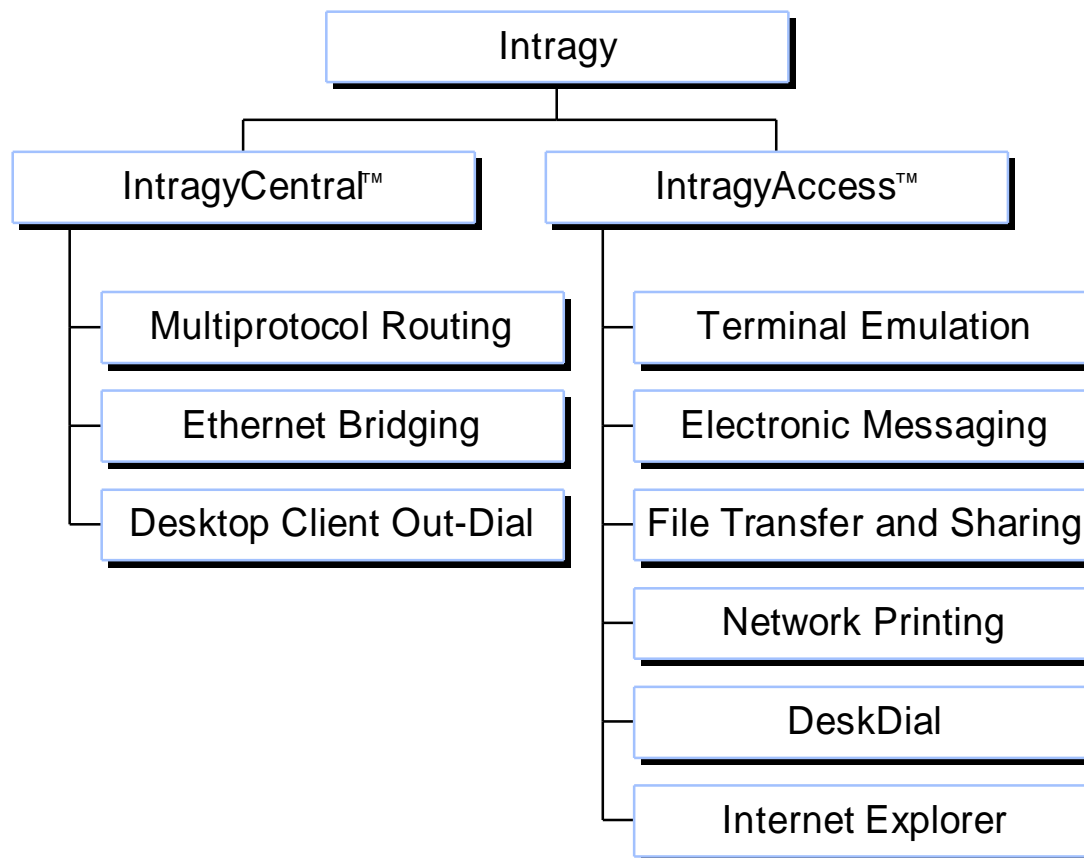


What is Intraggy

**Ascend's enterprise solution platform combining
MAX™ family-based features with desktop client
software to provide equal access solutions for
all users of an enterprise network**



Intragy Offering





Intragy Advantage

- **Intragy provides the enterprise with a total access solution — from switch to desktop**
- **Intragy provides equal end-user solutions for all major enterprise desktop platforms:**
 - Windows 3.1
 - Windows 95
 - Windows NT 4.0
 - Macintosh OS
- **Intragy eases the distinction between local and remote access for enterprise network users by providing the same access solutions for enterprise network users**
- **Intragy reduces deployment, training and support overhead for your IS groups by providing a single software solution for all major platforms**



IntragyCentral

Offering Detail



IntragyCentral

The following are components of IntragyCentral:

- Multiprotocol routing
- Ethernet bridging
- Desktop Client Out-dial (DeskDial)

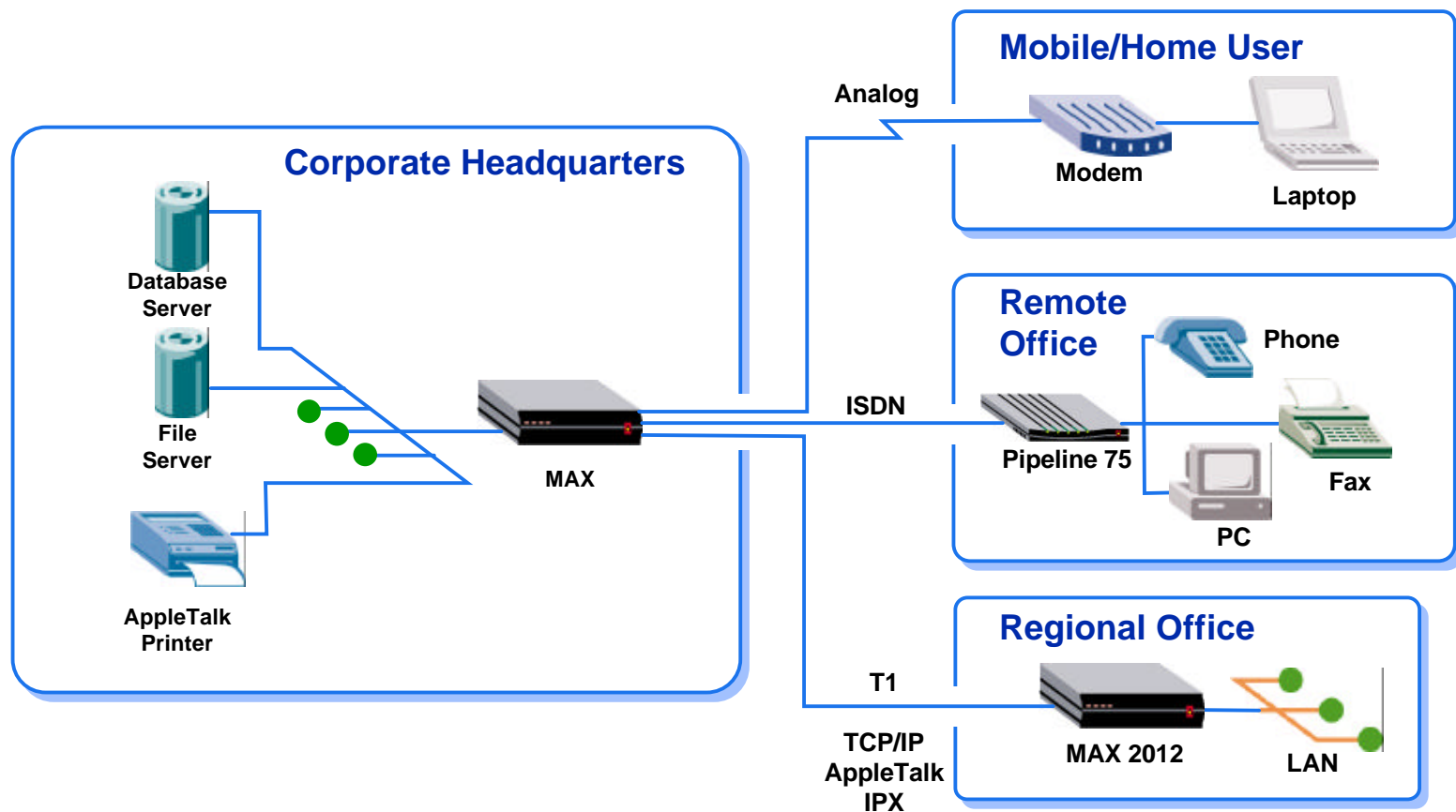


Multiprotocol Routing

- **Provides remote access to IP, IPX and AppleTalk based services to branch offices, telecommuters and dial-up users**
- **Extends network service access to telecommuters, home and branch offices**



Multiprotocol Routing Example



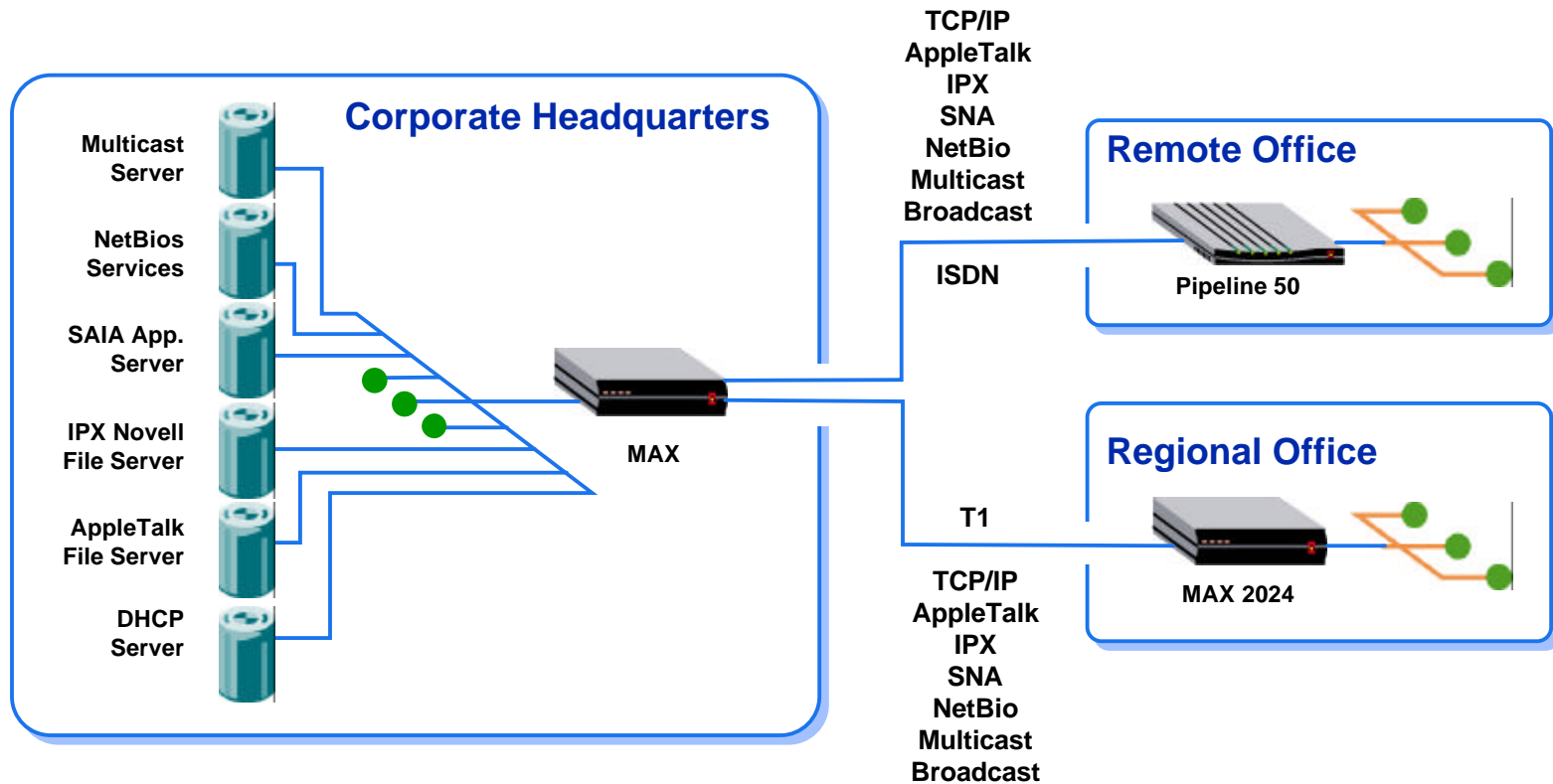


Ethernet Bridging

- **Expands reach of central LAN services by forwarding Ethernet traffic between remote locations**
- **Opens access to non-routed protocols**
- **Eases administration of remote offices by localizing address assignments into a single logical-network topology**



Ethernet Bridging Example



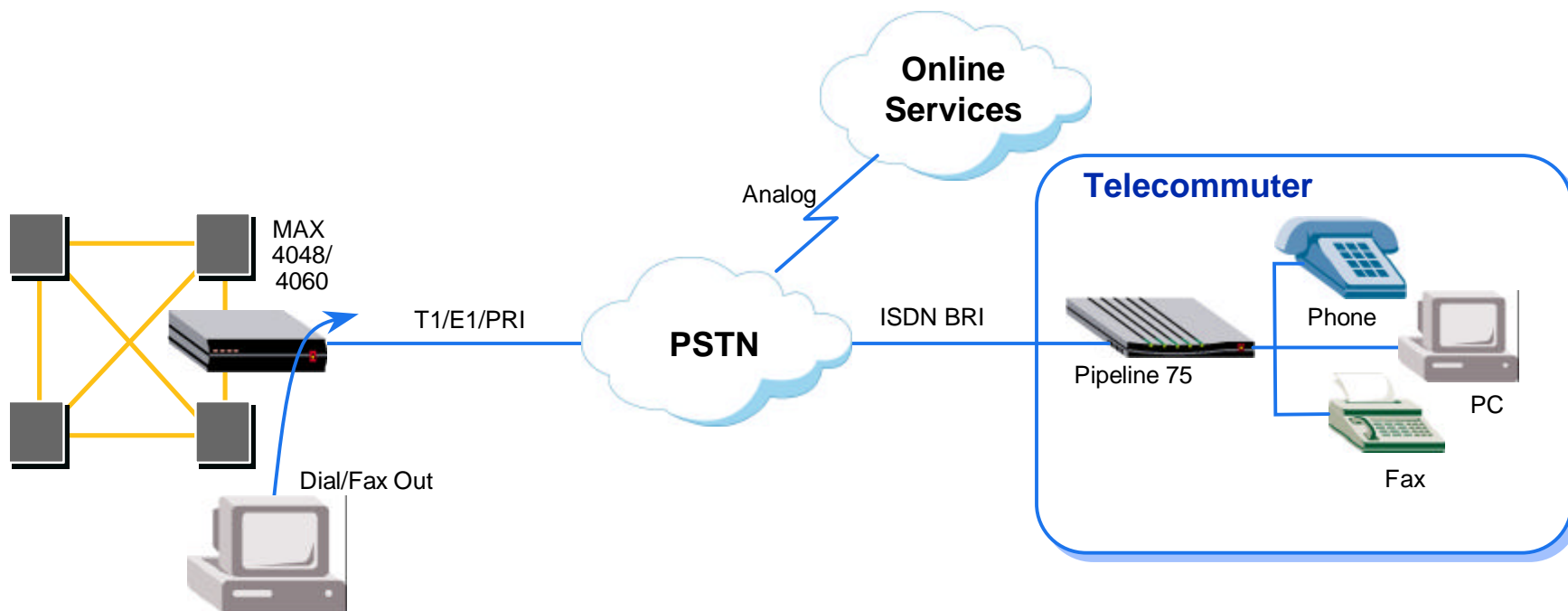


Desktop Client Out-Dial (DeskDial)

- **Turns any MAX or MAX TNT™ into a network accessible modem pool**
- **DeskDial client software accesses modems available in MAX and MAX TNT hardware for transparent out-dial capabilities**
- **Eliminates the need to provide analog phone lines directly to your PCs for outside access**
- **Can be used for FAX, remote TTY, online services and remote site access**



Desktop Client Out-Dial Example





IntragyAccess

Offering Detail



IntragyAccess

- **The following are components of IntragyAccess:**
 - Terminal emulation
 - Electronic messaging
 - File transfer and sharing
 - Network printing
 - Remote Access (Windows 3.1, Macintosh OS)
 - Multinational access



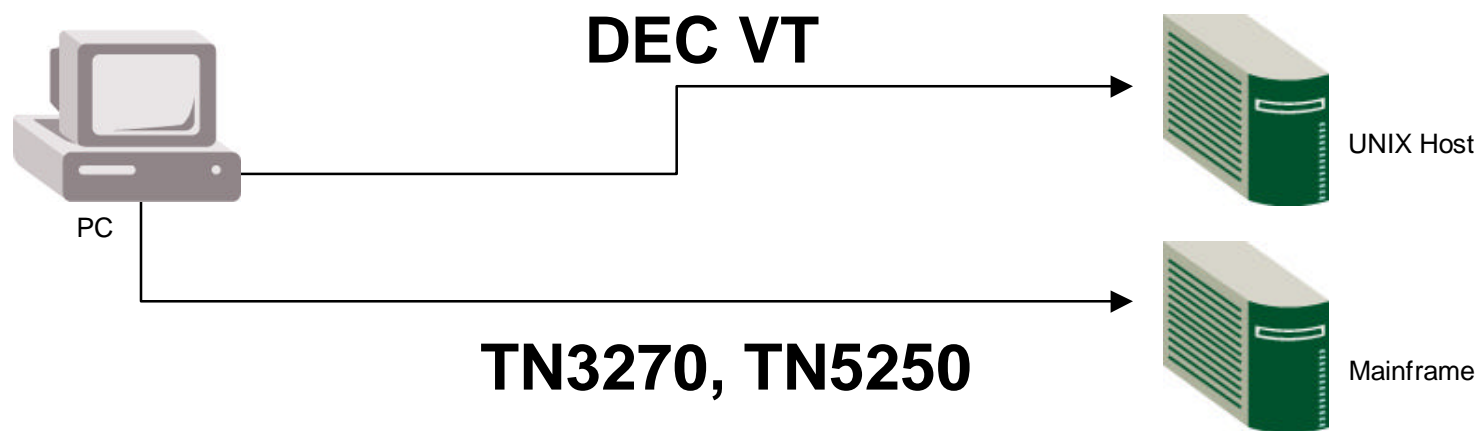
IntragyAccess

- **The one solution for desktop client infrastructure providing core network access**
- **Cross-platform support for Windows 3.1, 95, NT 4.0 and Macintosh OS provides one software solution for all major enterprise desktop platforms**
- **Simplified installation and integrated user interface reduces IS deployment, training and support overhead**



Terminal Emulation

- **Dec VT 52-320**
 - Provides host access to UNIX and VAX applications
- **IBM TN3270, IBM TN5250**
 - Host access to mainframe-based legacy systems
- **Full range of features including, keyboard mapping, macros, S/KEY, pass-through printing and IND\$FILE**





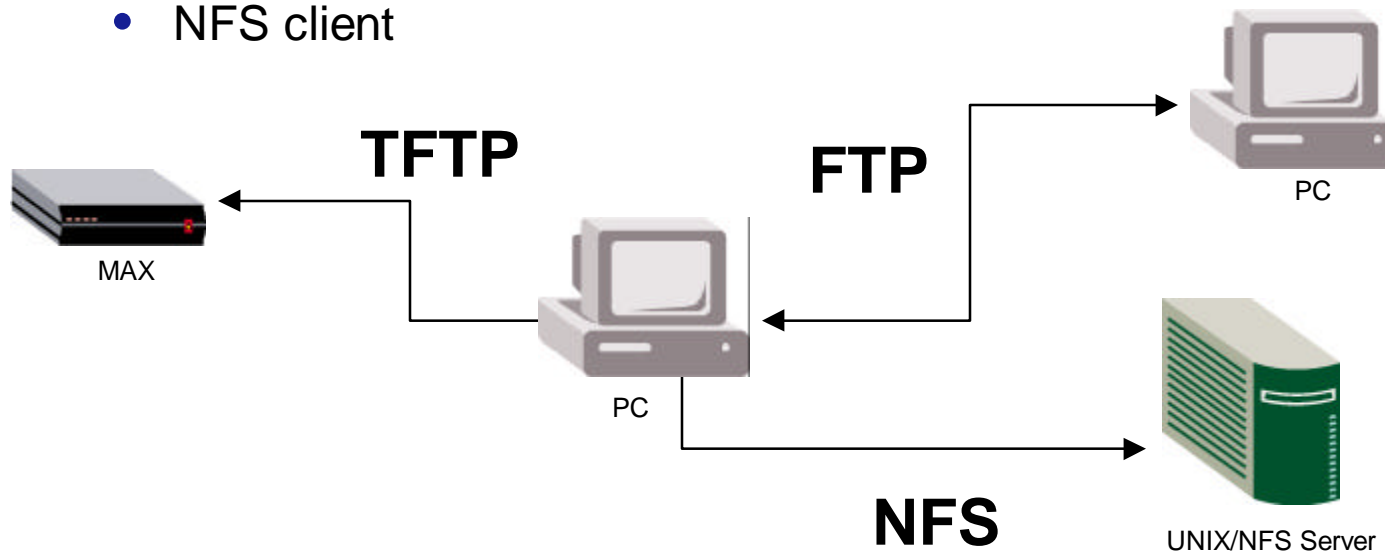
Electronic Messaging

- **Enterprise-directed e-mail access provides platform independent communications**
- **Multimedia e-mail support with MIME the Internet standard for electronic message formatting with inline support for graphics, sounds and QuickTime and file attachments — drag and drop icons from message window to desktop**
- **e-mail actions highlight, sort and file mail for any criteria**



File Transfer and Sharing

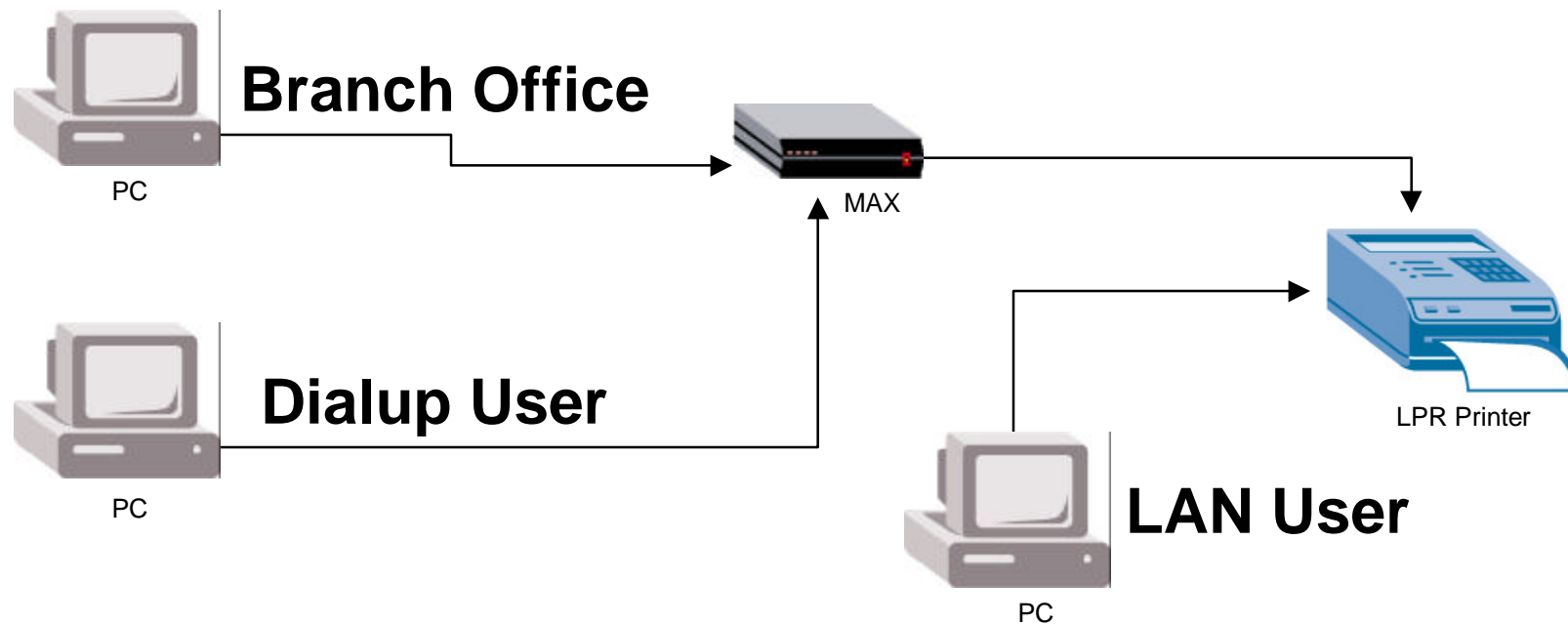
- Open desktop client access to share files between all network hosts
- Full range of file transfer and sharing access with
 - FTP client and server
 - TFTP server
 - NFS client





Network Printing

- LPR client for target platforms provides access to many laser printers and print servers over any TCP/IP network
- Only LPR client for the Macintosh





Multinational Access

- **Support for major international character encodings**
 - ISO 8859-1 (Latin 1)
 - 2022-JIS, EUS-JP, SJIS (Japanese)
 - BIG5 (Chinese)
- **Internationally localized**
 - French
 - German
 - Japanese



Summary

- **Intragy combines key remote access capabilities with key client software components for the end-users of an enterprise network**
- **Cross-platform desktop client software offering provides the same solution for all major enterprise desktop platforms to allow users to continue using the systems they're used to**
- **Deployment, training and support overhead and reduced for IS organizations with one solution for all users in all connection scenarios**

Intragy: Power for Enterprise Access