

Ascend

Pipeline 15



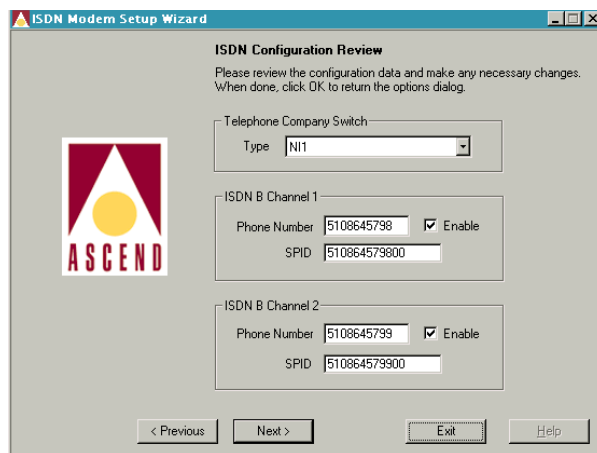
The Pipeline® 15 is an easy-to-use ISDN BRI terminal adapter that leads the pack when it comes to high-speed access to a corporate headquarters, intranet or the Internet. It comes complete with a powerful graphical user interface that lets individual users point-and-click their way through an installation procedure in less than 15 minutes.

In addition, dual analog ports enable users to make phone calls or send faxes over the same ISDN BRI line that connects them to a central site or the Internet. The Pipeline 15 also supports advanced functionality such as Calling Line ID (CLID) and Dynamic Bandwidth Allocation™ (DBA)—all the features required to make optimal use of existing resources.

Point-and-click interface ensures simplified installation and set-up procedures

The Pipeline 15 features the Pipeline configurator, an easy-to-use utility that lets users set up and configure their unit in less than 15 minutes.

- AutoSwitch and AutoSPID detection for easy ISDN set-up (included on the Pipeline Companion CD-ROM)
- Bundled applications (MAXLink Pro™, MS Internet Explorer, QuickLink 11 and TurboComm/2) enhance remote access
- Compatible with multiple platforms (PC, Unix workstation or Apple Macintosh)
- Plug-and-Play compatible



Integrated analog and digital capabilities make optimal use of resources

By consolidating separate transmission services over one ISDN BRI line, home users no longer have the burden of maintaining separate analog and digital lines.

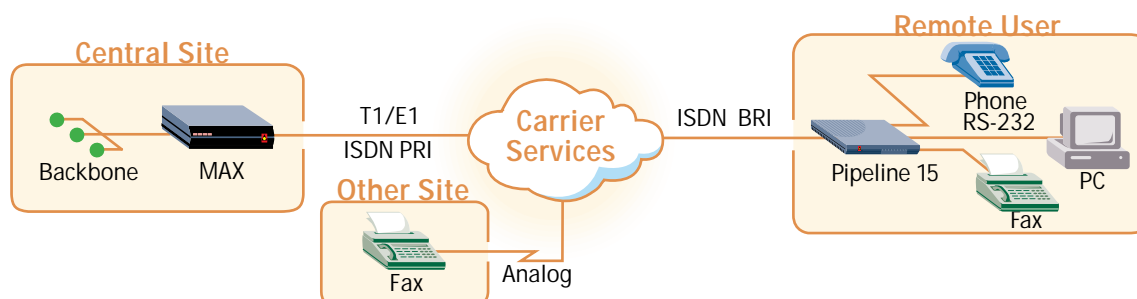
- Dual analog ports allow you to connect phones, modems and fax machines over a single ISDN line
- External high-speed serial port
- Advanced analog calling features (HOLD, DROP, TRANSFER, and CONFERENCE) for enhanced functionality
- Calling Line ID (CLID) functionality eliminates the need for extra cables or programs
- Sophisticated call routing directs calls to the correct analog device (i.e. phone, fax, or modem)

Bandwidth on Demand maximizes performance and decreases costs

Dial-up connections are established and removed transparently without interruptions to the user. Costs are minimized because you only pay for bandwidth as it is needed.

- Dynamic Bandwidth Allocation (DBA) varies channel usage by increasing the number of B-channels for high-performance tasks and dropping a channel when throughput is not needed
- Inverse multiplexing uses both BRI B-channels for up to 128 Kbps
- Incoming and outgoing analog calls preempt one B-channel while maintaining one B-channel for data connections

Remote Access to a Corporate Headquarters or the Internet



Support for WAN protocols ensures network interoperability

Support for a variety of WAN protocols enables users to connect to a variety of resources within their corporate network or the Internet. Asynchronous rate adaption allows users dialing in to the network to be compatible with all central site equipment.

- PPP, Multilink PPP (MP), Multilink Protocol Plus™ (MP+) and Bandwidth Allocation Control Protocol (BACP)
- V.120 asynchronous rate adaption

Hardware Specifications

Dimensions [21.5 cm x 14 cm x 3.2 cm]	8.5 in x 5.5 in x 1.25 in
Weight	2.15 lbs [.98 kg]
System Interface	RS-232 serial cable connection
WAN Interface	BRI S/T Interface (model: P15-1SBRI) BRI U Interface (model: P15-1UBRI)
Software Upgrade	Via built-in flash RAM
Power Requirements	90-130VAC. 0.4A 22-24VAC.02A 47-63Hz
Operating Requirements	Temperature: 32-104°F (0-40°C) Altitude: 0-14,800 feet (0-4,500 meters) Relative Humidity: 5-95% (non-condensing)

Software Specifications

WAN Protocols Supported	PPP, MultiLink PPP (MP), Multilink Protocol Plus (MP+), BACP, V.120 rate adaption, V.110 rate adaption
Bandwidth Management	Multilink PPP (MP), Multilink Protocol Plus (MP+)
Management	Serial cable connection, Ascend's remote management protocol

The Pipeline Companion CD-ROM

The Pipeline Companion CD-ROM comes free of charge with all Ascend Pipeline products and offers a whole suite of useful applications and software. It is designed to help Pipeline users get up and accessing their central site or the Internet in no time at all. The Pipeline Companion CD-ROM features:

- Pipeline Configurator—a point-and-click setup and installation utility
- MAXLink Pro—a comprehensive offering of IP/IPX communication software
- MAXDial—dial-out modem software that creates a “virtual modem” at the desktop
- Networking Glossary—an extensive listing of common networking industry terms
- HTML-based Help files—complete on-line help for answering set-up and installation questions
- Microsoft Internet Explorer—Microsoft browser for surfing the Internet

And all of the programs offer “install wizards” for easy setup.



Ascend Communications, Inc.

Worldwide and North American Headquarters

One Ascend Plaza
1701 Harbor Bay Parkway
Alameda, CA 94502, United States
Tel: 510.769.6001
Fax: 510.747.2300
E-mail: info@ascend.com
Toll Free: 800.621.9578
Fax Server: 415.688.4343
Web Site: <http://www.ascend.com>

European Headquarters

Rosemount House
Rosemount Avenue, West Byfleet
Surrey KT14 6NP, United Kingdom
Tel: +44 (0) 1932.350.115
Fax: +44 (0) 1932.350.199

Japan Headquarters

Level 19 Shinjuku Daiichi-Seimei Bldg.
2-7-1 Nishi-Shinjuku
Shinjuku-ku, Tokyo 163-07, Japan
Tel: +81.3.5325.7397
Fax: +81.3.5325.7399
Web Site: <http://www.ascend.co.jp>

Asia-Pacific Headquarters

Suite 1419, Central Building
1 Pedder Street
Central, Hong Kong
Tel: +852.2844.7600
Fax: +852.2810.0298

Latin, South America and the Caribbean Headquarters

One Ascend Plaza
1701 Harbor Bay Parkway
Alameda, CA 94502, United States
Tel: 510.769.6001
Fax: 510.747.2669

Ascend Communications, Inc. is a leading, world-wide provider of remote networking solutions for corporate central sites, Internet Service Providers' points of presence, remote offices, mobile workers, and telecommuters. Ascend develops, manufactures, markets, sells and supports products which utilize bandwidth on demand to extend existing corporate networks for applications such as remote LAN access, Internet access, telecommuting, SOHO connectivity and videoconferencing/multimedia access. Detailed information on Ascend products, news announcements, seminars, service and support is available on Ascend's home page at the World Wide Web site: <http://www.ascend.com>.

Ascend markets the GRF, MAX, Multiband, MultiDSL, Pipeline, NetWarp and Security families of products. Ascend products are available in more than 30 countries worldwide.

Ascend and the Ascend logo are registered trademarks and all Ascend product names are trademarks of Ascend Communications, Inc. Other brand and product names are trademarks of their respective holders.

Specifications are subject to change without notice.

© Copyright 1997 Ascend Communications, Inc.
01-48
05-97



**Remote Networking
Solutions That Work.™**