

# Ascend

## NavisXtend Statistics Server and Report Generator

The NavisXtend™ Statistics Server and Report Generator applications let service providers assess network operations and deliver real-time network status information to their customers. The Statistics Server and Report Generator work in tandem to provide information on Ascend IP, Frame Relay, SMDS and ATM networks and to output that information in easy-to-understand tables and graphs.

The Statistics Server and Report Generator applications help service providers plan for network growth and uncover emerging network problems before service is affected. In addition, service providers can offer their customers extensive services and access to critical information. Together, the Statistics Server and Report Generator allow service providers to increase their revenue opportunities, while providing tangible proof of SLA and QoS commitments.

### Detailed network data supports proactive planning and discovery of network issues

The Statistics Server and Report Generator applications give network service providers the tools they need for real time access to network status information. The applications collect, analyze and present statistical information found in Ascend B-STDX 8000/9000, CBX 500, STDX 6000 and SA 100/600 networks.

- Comprehensive statistics on the following:
  - Frame Relay trunks, User Network Interfaces (UNIs) Network-to-Network Interfaces (NNIs) and Permanent Virtual Circuits (PVCs) down to a per-port or per-customer level
  - SMDS DX1/SSI interfaces
  - ATM PVCs and Switched Virtual Circuits (SVCs), including complete call statistics on a UNI level
- Bulk TFTP file transfers from the switch network minimize the impact of statistics collection
- Configurable poll times (from five minutes to one hour)
- Standard output (ASCII or Sybase) to interface with a variety of software applications
- Data in the form of cumulative total, delta changes or maximum value calculations
- Data can be uploaded to higher level management systems to fit an existing TMN architecture.

### Real-time access and reporting offers end users customized view of the network

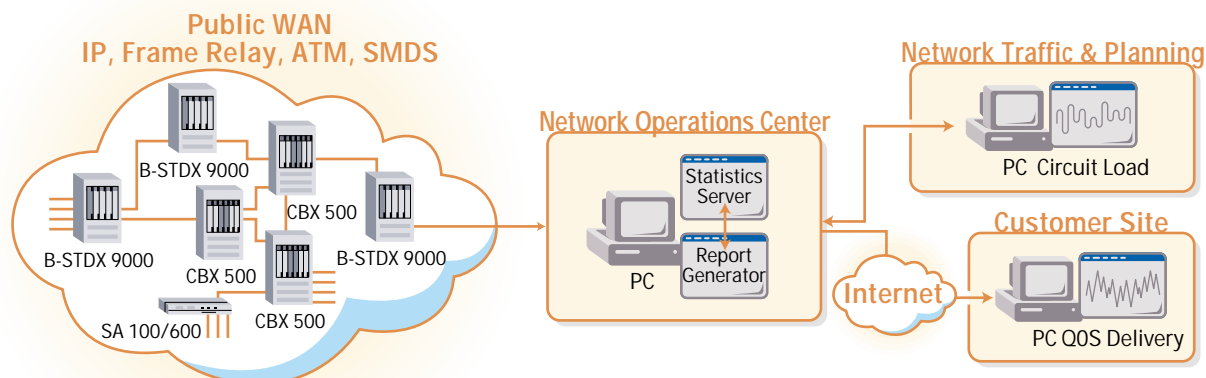
Custom tables and graphs as well as real-time access give customers flexible access to information about their portion of the network. This enables service providers to deliver profitable services that are specifically tailored to their customers' unique needs.

- Information can be exported to any standards-based third-party reporting application
- Service providers can limit customers to their portion of the network using access rights, user group definitions and permission levels
- Report Generator supports hundreds of simultaneous users who can view data and reports with any Web-based browser

### Data consolidation and configurable gathering metrics optimize network bandwidth

The Statistics Server minimizes the bandwidth impact of statistics collection by giving service providers the option to configure polling metrics and enable efficient bulk transfers. One or more Statistics Servers can examine the network, for dispersed control across multiple sites.

### NavisXtend Statistics Server and Report Generator



## Statistical Server Technical Specifications

|   |  |
|---|--|
| Hardware Requirements                   | Sun SPARC or UltraSPARC<br>128 MB RAM<br>2.1 GB hard disk; The disk space required to store collected statistics varies by network size 1/4 tape drive |
| Software Requirements                   | Solaris 2.4 or higher<br>NavisCore/UX version 2.2 or higher<br>Sybase version 11 or higher   |
| Switch Software Requirements            | B-STDx 8000/9000: 4.2<br>CBX 500: 1.0 or later<br>STDx 6000: 2.3 or later<br>SA 100/600: 1.0 or later  |
| Measurable Switch Elements              | Frame Relay trunks, UNI, NNI, PVC;<br>SMDS DX1-SSI: ATM PVC, SVC   |
| Data Format for Statistical Information | Comma-delimited ASCII, Sybase database   |

## Report Generator Technical Specifications

|                                  |   |
|----------------------------------|---|
| Hardware Requirements            | Enterprise UltraSPARC II or higher<br>256 MB RAM<br>2.1 GB hard disk; The disk space required to store reports varies by the number of reports selected<br>CD drive |
| Software Requirements            | Solaris 2.5 or higher<br>NavisCore/UX version 2.2 or higher<br>Sybase version 11 or higher<br>Statistics Server 2.5 or higher                                       |
| Switch Software Requirements     | B-STDx 8000/9000: 4.2 or later<br>CBX 500: 1.0 or later<br>STDx 6000: 2.3 or later<br>SA 100/600: 1.0 or later  |
| Standards                        | HTTP  |
| Preformatted Report Measurements | Frame Relay trunks, UNI, NNI, PVC;<br>SMDS DX1/SS1; ATM PVC, SVC  |

## NavisXtend Servers

The NavisXtend family includes the following servers:

|  |   |
|--|---|
| Accounting Server                      | Collects Switched Virtual Circuit (SVC) and Permanent Virtual Circuit (PVC) call detail that can be used to generate customer invoices              |
| Customer Network Management Server     | Allows service providers to offer managed data services with customer viewing   |
| Fault Server                           | Intelligently correlates and consolidates network event and alarm information to quickly identify network problems                                  |
| Provisioning Server                    | Reduces configuration steps by automating the provisioning of cards, ports and circuits   |
| Standby Server                         | Allows warm standby of primary network management database to increase the level of data availability in the event of an outage to the primary site |
| Statistics Server and Report Generator | Collects network statistics and generates graphical reports that are easily understood by end users   |

## Ascend Communications, Inc.

### Worldwide and North American Headquarters

One Ascend Plaza  
1701 Harbor Bay Parkway  
Alameda, CA 94502, United States  
Tel: 510.769.6001  
Fax: 510.747.2300  
E-mail: [info@ascend.com](mailto:info@ascend.com)  
Toll Free: 800.621.9578  
Fax Server: 415.688.4343  
Web Site: <http://www.ascend.com>

### European Headquarters

Rosemount House  
Rosemount Avenue, West Byfleet  
Surrey KT14 6NP, United Kingdom  
Tel: +44 (0) 1932.350.115  
Fax: +44 (0) 1932.350.199

### Japan Headquarters

Level 19 Shinjuku Daiichi-Seimei Bldg.  
2-7-1 Nishi-Shinjuku  
Shinjuku-ku, Tokyo 163-07, Japan  
Tel: +81.3.5325.7397  
Fax: +81.3.5325.7399  
Web Site: <http://www.ascend.co.jp>

### Asia-Pacific Headquarters

Suite 1419, Central Building  
1 Pedder Street  
Central, Hong Kong  
Tel: +852.2844.7600  
Fax: +852.2810.0298

### Latin, South America and the Caribbean Headquarters

One Ascend Plaza  
1701 Harbor Bay Parkway  
Alameda, CA 94502, United States  
Tel: 510.769.6001  
Fax: 510.747.2669

Ascend Communications, Inc. develops, manufactures and sells wide area networking solutions for telecommunications carriers, Internet service providers, and corporate customers worldwide. For more information about Ascend and its products, please visit the Ascend web site at <http://www.ascend.com>, or e-mail [info@ascend.com](mailto:info@ascend.com).

Ascend markets the B-STDx, CBX, GRF, IP, MAX, Multiband, MultiDSL, Navis, Pipeline, SA, SecureConnect and STDx families of products. Ascend products are available in more than 30 countries worldwide.

Ascend and the Ascend logo are registered trademarks and all Ascend product names are trademarks of Ascend Communications, Inc. Other brand and product names are trademarks of their respective holders.

Specifications are subject to change without notice.

© Copyright 1997 Ascend Communications, Inc.

01-97  
09/97

