

Ascend

Multiband VSX BRI



You need a compact inverse multiplexer with large-scale possibilities. The Multiband VSX BRI is a cost-effective solution for growing your multimedia network.

Multimedia Access ▾ Videoconferencing ▾ Digital Dial Backup

The Multiband™ VSX BRI is a notebook-sized inverse multiplexer that extends your corporate videoconferencing network to remote sites using ISDN BRI circuits. The bandwidth-on-demand capabilities of the Multiband VSX BRI allow you to operate your video network at substantial savings by using only the bandwidth that is needed. An expansion module can be added to give you even greater bandwidth for more sophisticated applications.

The Multiband VSX BRI fits into any room system rack or on any desktop and provides inverse multiplexing, dial-up videoconferencing, call and device management, and global connectivity. These features are well-suited for applications such as group and desktop videoconferencing, distance learning, electronic banking, telemedicine file transfer and dial backup. The Multiband VSX BRI is a powerful tool that helps you build flexible and cost-effective multimedia solutions.

Multimedia Solutions and Videoconferencing

Bandwidth on demand maximizes performance and decreases cost

Digital dial-up connections are transparently established and removed as required. The expansion module can be added to give you additional bandwidth up to 512 kbps.

- Base unit functions as ISDN Terminal Adapter (TA) to set up sessions at speeds up to 128 kbps
- Supports Nx56 and Nx64
- A 3-BRI expansion module allows for inverse multiplexing of four ISDN BRI lines and boosts data rate to 512 kbps
- Ascend Inverse Multiplexing (AIM) offers feature-rich bandwidth management among Ascend Multiband units
- Conforms to Bandwidth ON Demand Interoperability Group (BONDING) standards for interoperability with other vendors' inverse multiplexers
- U-interface (internal NT1) or S/T interface

Communicates with multiple switched services for flexible network access

The Multiband VSX BRI is fully compatible and can communicate with a broad range of existing network access equipment. Applications can choose a switched service on a call-by-call basis.

- Switched 56 kbps DSUs
- ISDN Terminal Adapters

- Inverse multiplexers conforming to the BONDING standard
- Integrates seamlessly with Ascend Multiband and MAX product families

Ensures compatibility with a broad range of videoconferencing manufacturers

Dial-access features allow the VSX BRI to interoperate with multiple manufacturers' videoconferencing equipment.

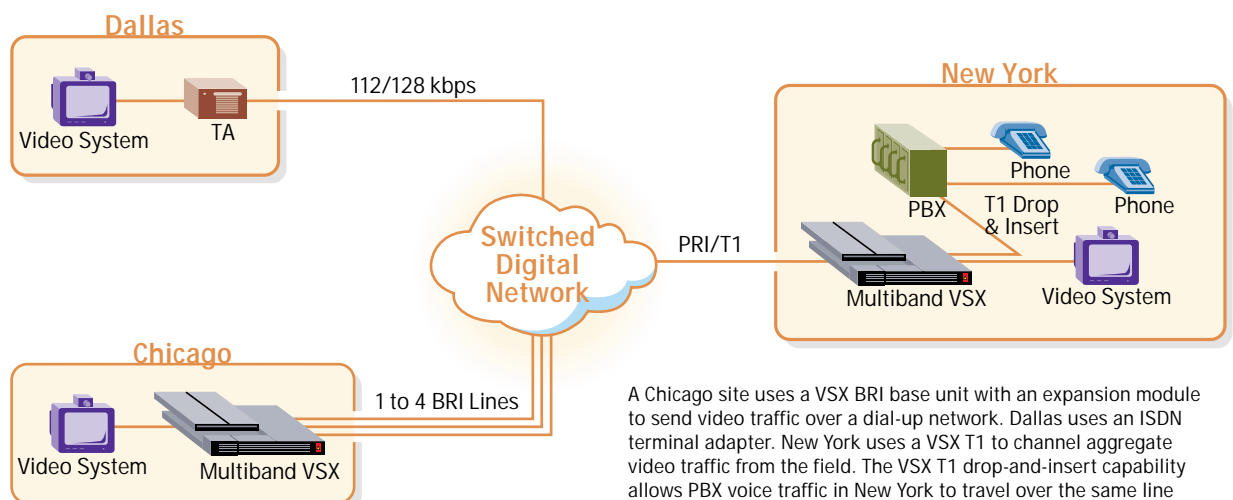
- Field-selectable dual V.35, RS-449/422 or X.21 data ports
- RS366, V.25 bis, X.21 and control-lead dialing
- Exact clocking and 56-64 kbps rate adaption
- Speed dialing and stored call profiles
- Supports high-speed desktop videoconferencing

Operates with domestic and international services for global connectivity

Ascend's Multiband products are certified in 30 countries and provide global connectivity with switched services from multiple vendors.

- AT&T ACCUNET Services
- AT&T Switched Digital International
- MCI VPDS 56/64 kbps
- Sprint VPN 56/64 kbps
- Local Exchange Carrier 56/64 kbps
- International PTT 64 kbps

Network Solution



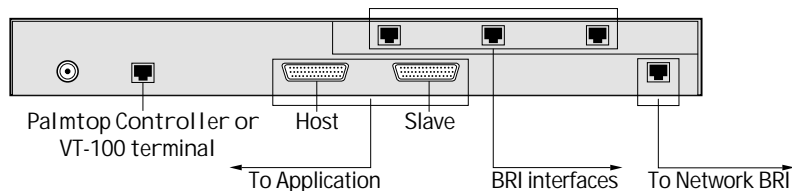
A Chicago site uses a VSX BRI base unit with an expansion module to send video traffic over a dial-up network. Dallas uses an ISDN terminal adapter. New York uses a VSX T1 to channel aggregate video traffic from the field. The VSX T1 drop-and-insert capability allows PBX voice traffic in New York to travel over the same line with videoconferencing traffic. Multiband products are compatible with any vendors' ISDN terminal adapter.

Extensive management features offer simplified setup and administration

An inband remote management capability allows you to modify and control your system remotely or from the central site. Features support local or remote diagnostics and provide menu-driven management.

- Dial-up remote management from any Ascend Multiband product
- Local and remote loopbacks
- Channel bit error rate testing
- Configuration backup
- Password security
- Field software upgradability
- Controllable from a palmtop or VT-100 terminal

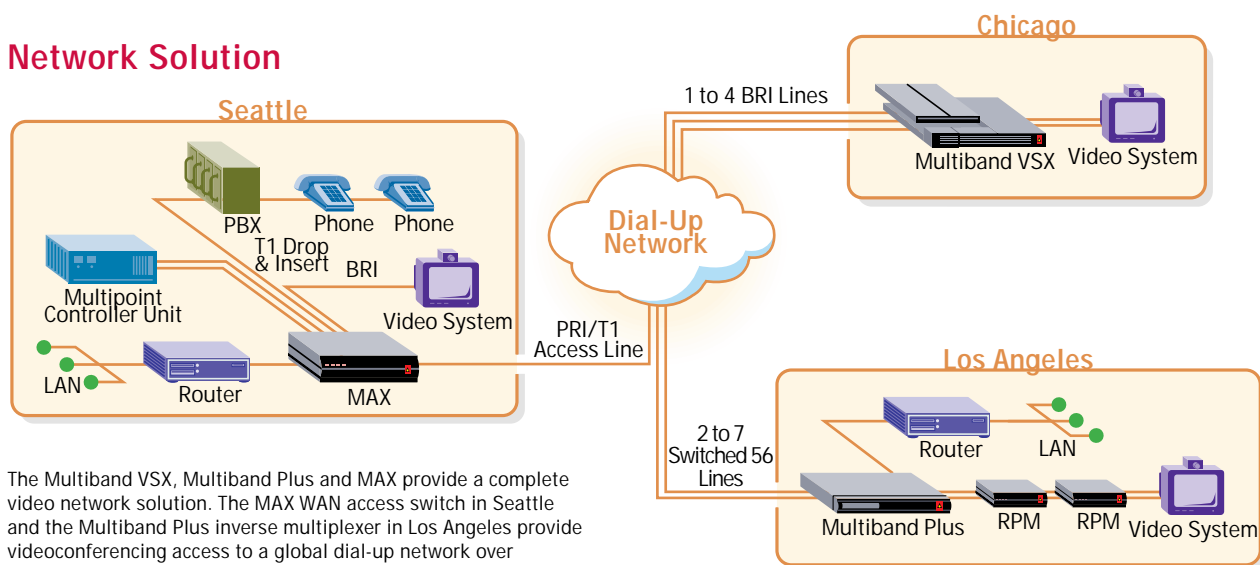
Multiband VSX BRI Back Panel



Multiband VSX BRI



Network Solution



The Multiband VSX, Multiband Plus and MAX provide a complete video network solution. The MAX WAN access switch in Seattle and the Multiband Plus inverse multiplexer in Los Angeles provide videoconferencing access to a global dial-up network over switched 56 and T1 circuits. They also provide dial-up access for LAN routers. The VSX inverse multiplexer connects a customer's video system in Chicago to the video network over BRI lines. Remote Port Modules (RPMs) extend the Multiband's ports to videoconferencing rooms at distances of up to 3,400 feet.

Hardware Specifications

Dimensions	Base Unit: 12.63 in x 12.25 in x 1.75 in (1U) [32.1 cm x 31.1 cm x 4.5 cm] Module: 7.38 x 11 x 0.88 in [18.7 x 27.9 x 2.2 cm]
Weight	Base Unit: 4 lbs 4.1 oz Module: 14.2 oz
Power Requirements	90-130VAC, 0.2-0.4A/220-40VAC, 0.1-0.2A
Operating Requirements	Operating temperature: 32-104°F [0-40°C] Storage temperature: 40-176°F [-71.4-80°C] Humidity: 0-90% (noncondensing)
Base System	Multiband VSX BRI with ISDN basic rate interfaces, two host ports, D-channel signaling for ISDN, RS366/V.25 bis/X.21 dialing protocols, Ascend inverse multiplexing, and BONDING
Modules	ISDN BRI-3 bandwidth expansion module adds three BRI ports for a total unit capacity of 512 kbps
Cabling	Palmtop to DB9 for terminal access
DTE Connectors	Two DB-44 connectors support V.35, RS449/422 standard and X.21
Control Terminal	Palmtop hand-held terminal VT-100 access

Ascend Communications, Inc.

Worldwide and North American Headquarters

One Ascend Plaza
1701 Harbor Bay Parkway
Alameda, CA 94502, United States
Tel: 510.769.6001
Fax: 510.747.2300
E-mail: info@ascend.com
Toll Free: 800.621.9578
Fax Server: 415.688.4343
Web Site: <http://www.ascend.com>

European Headquarters

Rosemount House
Rosemount Avenue
West Byfleet
Surrey KT14 6NP, United Kingdom
Tel: +44 (0) 1932.350.115
Fax: +44 (0) 1932.350.199

Japan Headquarters

Level 14 Shinjuku Daiichi-Seimei Bldg.
2-7-1 Nishi-Shinjuku
Shinjuku-ku, Tokyo 163-07, Japan
Tel: +81.3.5325.7397
Fax: +81.3.5325.7399
Web Site: <http://www.ascend.co.jp>

Asia-Pacific Headquarters

Suite 1419, Central Building
1 Pedder Street
Central, Hong Kong
Tel: +852.2844.7600
Fax: +852.2810.0298

Ascend's Remote Networking Products

GRF™ Family

GRF products are high-performance IP switches that let network service providers cost-effectively and reliably offer network access and backbone services.

MAX™ Family

The MAX family of high-density, multiprotocol WAN access switches provide access to central sites or the Internet over high-speed access lines such as frame relay over ISDN PRI, channelized T1/E1 and ISDN BRI lines.

Pipeline® Family

Pipeline products are Ethernet-to-ISDN bridges/routers that connect remote users in small or home offices to backbone networks and/or the Internet.

Multiband™ Family

Multiband bandwidth on demand controllers are designed for videoconferencing and multimedia applications and let users dial up bandwidth in increments of 56/64 kbps up to 4 mbps.

NetWarp™ Family

NetWarp products are high-performance ISDN terminal adapters that enable PC users to access the Internet or a remote LAN using the full 128 kbps of an ISDN BRI line.

Security Family

Ascend's Security family incorporates the dynamic firewall technology in Secure Access products with Access Control's comprehensive security management system to deliver iron-clad, end-to-end security for the entire network.

Ascend Communications, Inc. is a leading, worldwide provider of remote networking solutions for corporate central sites, Internet Service Providers' points of presence, remote offices, mobile workers, and telecommuters. Ascend develops, manufactures, markets, sells and supports products which utilize bandwidth on demand to extend existing corporate networks for applications such as remote LAN access, Internet access, telecommuting, SOHO connectivity and videoconferencing/multimedia access. Detailed information on Ascend products, news announcements, seminars, service and support is available on Ascend's home page at the World Wide Web site <http://www.ascend.com>.

Ascend markets the Access Control, GRF, MAX, Multiband, Pipeline, Netwarp and Secure Access families of products. Ascend products are available in more than 30 countries worldwide.

Access Control™, Dynamic Bandwidth Allocation™ (U.S. Patent No.5,231,649), MAX™, MAX TNT™, MAXDial™, MAXLink Pro™, Multiband™, Multilink Protocol Plus™, NetWarp™, Pipeline® and Secure Access™ are trademarks of Ascend Communications, Inc. Ascend Advantage Services™ is a servicemark of Ascend Communications, Inc. Other trade names mentioned in this publication belong to their respective owners.

Specifications are subject to change without notice.

© Copyright 1996

Ascend Communications, Inc.

01-19

11-96

Ascend's Services

Ascend Advantage ServiceSM

Ascend Advantage Services offers a comprehensive selection of installation, maintenance, remote support and per-incident services for customers of Ascend's remote networking products.



**Remote Networking
Solutions That Work.™**

