

# B-STDx 9000



## Ethernet 10/100Base-T I/O Module

The Ethernet 10/100Base-T I/O Module for the B-STDx 9000 Multiservice WAN Switch provides high speed Ethernet access to the Ascend switching fabric. Operating as a standard IP routing interface, when used with IP Navigator™, the 10/100 Processor provides users with a high-speed interface to Ascend's IP Switch (GRF) and MAX TNT family and/or high-speed links to local Internet/Intranet hosting servers.

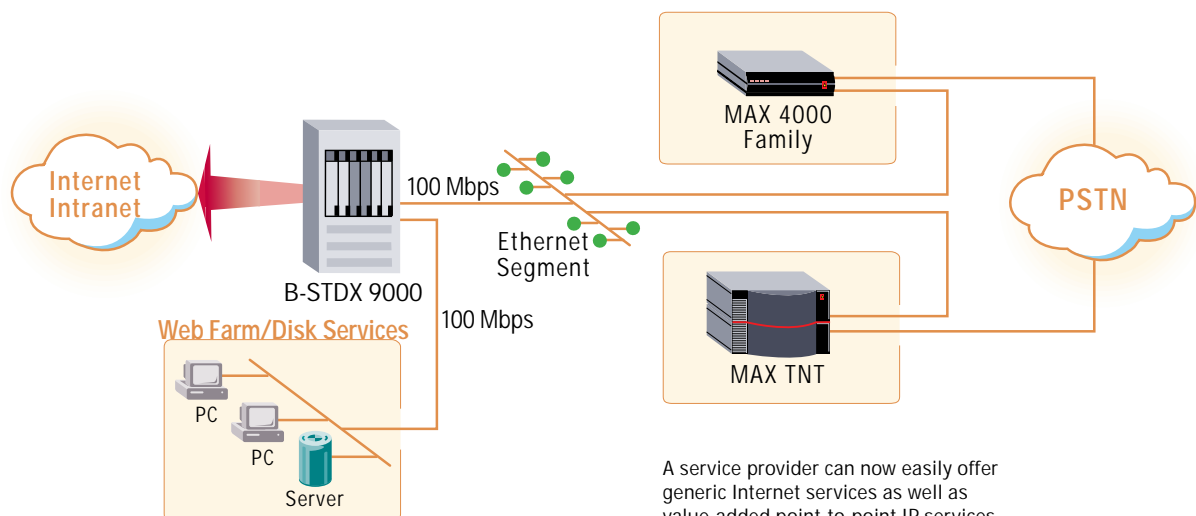
### Supplies Internet services and value-added services

The 10/100 Ethernet I/O module enables a service provider to easily offer both Internet hosting services and value-added IP routing services that are inherent in IP Navigator. IP traffic received from the Ethernet module is forwarded over a Multipoint-to-Point Tunnel (MPT) built by IP Navigator, or over a regular Permanent Virtual Circuit (PVC). Similarly, traffic received from the network is forwarded from the MPT or circuit to the appropriate Ethernet segment and address.

### Improves network performance and protects investment

The Ethernet 10/100Base-T Module reduces bottlenecks to dial access equipment, improving network performance with high speed 100 Mbps connections. This enhanced performance enables new service opportunities with direct access to LAN-attached Web, mail, security and transaction processing servers, while protecting the investment in existing LAN server equipment.

## Dial Server Aggregation and Internet/Intranet Services



A service provider can now easily offer generic Internet services as well as value-added point-to-point IP services.



## Operational features

### Protocols supported

- TCP
- UDP
- ICMP
- ARP
- INARP
- Telnet, TFTP, FTP
- SNMP
- OSPF
- RIP
- RIP 2
- BGP4
- Static Routing
- Traffic and route filters
- IP QoS
- DVMRP
- MOSPF
- PIM
- IGMP

### Management

- RFC 1398 Ethernet MIB
- RFC 1213 TCP/IP-based Internets MIB

### Throughput

- 540k pps/ module (128 byte packets)

## Specifications

### Physical dimensions

- Size: 1 in x 16 in x 11 in  
(2.5 cm x 40.6 cm x 27.9 cm)
- Weight: 2 lb (.91 kg)

### Power requirements

- 90-91 watts

### Agency approvals

- EN55022 Class A (CISPR)
- EN50082
- FCC Part 15 Class A

### Temperature range

- 0-50°C (32-122°F)

### NEBS

- GR-63-CORE
- GR-1089-CORE

### Physical interfaces

- Four RJ45-8 connectors  
(two-pair, category 5 UTP), or
- Four Media Independent Interface  
(MII) connectors

### Interface standards

- 802.3-compliant 100 Base TX
  - 10 Mbps operation
  - 100 Mbps operation
- Full- or half-duplex
- Auto-negotiation for 10 or 100 Mbps rate  
and full- or half-duplex
- Internal and external Loopback

### LED indicators per module

- Three LEDs are provided to indicate module status.

Status	LED State
Normal Operation	Good LED Lit
Module Failure	Failed LED Lit
Module On-line - redundant module installed and off-line	Redundant LED lit
Module On-line - no redundant module installed	Redundant LED off
Module Off-line - redundant module installed and on-line	Redundant LED flashing

### LED indicators per port

- Five LEDs are provided per port to indicate port status and traffic.

Status	LED State
TX activity	On/Off
RX activity	On/Off
Link Est.	On/Off
Full Duplex	On/Off
Collision	On/Off

## Ordering information

Description	Product code
2-port Ethernet I/O Processor	59113
2-port Ethernet I/O Adapter	59114

## Ascend Communications, Inc.

### Worldwide and North American Headquarters

One Ascend Plaza  
1701 Harbor Bay Parkway  
Alameda, CA 94502, United States  
Tel: 510.769.6001  
Fax: 510.747.2300  
E-mail: [info@ascend.com](mailto:info@ascend.com)  
Toll Free: 800.621.9578  
Fax Server: 415.688.4343  
Web Site: <http://www.ascend.com>

### European Headquarters

Rosemount House  
Rosemount Avenue, West Byfleet  
Surrey KT14 6NP, United Kingdom  
Tel: +44 (0) 1932.350.115  
Fax: +44 (0) 1932.350.199

### Japan Headquarters

Level 19 Shinjuku Daiichi-Seimei Bldg.  
2-7-1 Nishi-Shinjuku  
Shinjuku-ku, Tokyo 163-07, Japan  
Tel: +81.3.5325.7397  
Fax: +81.3.5325.7399  
Web Site: <http://www.ascend.co.jp>

### Asia-Pacific Headquarters

Suite 1908, Bank of America Tower  
12 Harcourt Road  
Hong Kong  
Tel: +852.2844.7600  
Fax: +852.2810.0298

### Latin, South America and the Caribbean Headquarters

One Ascend Plaza  
1701 Harbor Bay Parkway  
Alameda, CA 94502, United States  
Tel: 510.769.6001  
Fax: 510.747.2669

Ascend Communications, Inc. develops, manufactures and sells wide area networking solutions for telecommunications carriers, Internet service providers, and corporate customers worldwide. For more information about Ascend and its products, please visit the Ascend web site at <http://www.ascend.com>, or e-mail [info@ascend.com](mailto:info@ascend.com).

Ascend markets the B-STDx, CBX, IP, MAX, Multiband, MultiDSL, Navis, Pipeline, SA, SecureConnect and STDx families of products. Ascend products are available in more than 30 countries worldwide.

Ascend and the Ascend logo are registered trademarks and all Ascend product names are trademarks of Ascend Communications, Inc. Other brand and product names are trademarks of their respective holders.

Specifications are subject to change without notice.

© Copyright 1997 Ascend Communications, Inc.  
01-107  
09/97

